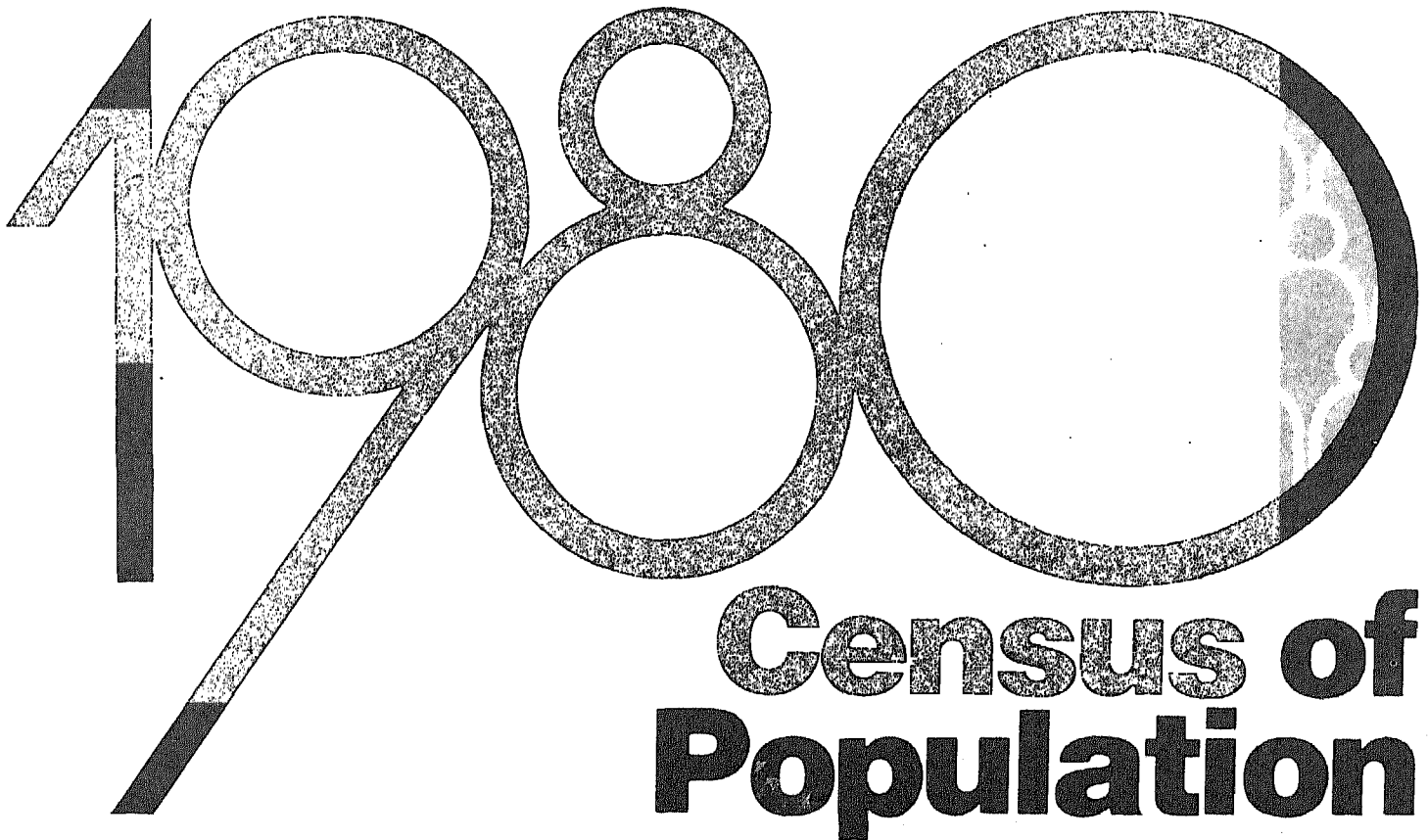


PC80-1-A36  
N. Dak.

CHARACTERISTICS OF THE POPULATION

# Number of Inhabitants

## **NORTH DAKOTA**



U.S. Department of Commerce  
BUREAU OF THE CENSUS

# 1980 Census of Population

VOLUME 1  
CHARACTERISTICS OF THE POPULATION

CHAPTER A

## Number of Inhabitants

PART 36

**NORTH DAKOTA**

PC80-1-A36

Issued December 1981



U.S. Department of Commerce  
Malcolm Baldrige, Secretary  
Joseph R. Wright, Jr.,  
Deputy Secretary  
Robert G. Dederick,  
Assistant Secretary for  
Economic Affairs  
BUREAU OF THE CENSUS  
Bruce Chapman,  
Director

### Data Index

---

This index provides a summary listing of the tables in which the particular data are presented. For a listing of the individual tables and their page numbers, see page 1.

---

	Table
<b>The State</b>	
Earliest Census to 1980 . . . . .	1
Size of Place . . . . .	7
Urban and Rural: 1930 to 1980 . . . . .	8
<b>Counties</b>	
Land Area and Population . . . . .	2
Urban and Rural . . . . .	3
County Subdivisions . . . . .	4
<b>Places</b>	
All Places . . . . .	5
Incorporated Places of 5,000 or More . . . . .	6
<b>Inside and Outside SMSA's</b>	
Urban and Rural . . . . .	9
Size of Place . . . . .	10
<b>SMSA's</b>	
Component Parts . . . . .	11
Type of Residence . . . . .	12
<b>Urbanized Areas</b>	
Component Parts . . . . .	13

---



## BUREAU OF THE CENSUS

Bruce Chapman, Director

Daniel B. Levine, Deputy Director

### POPULATION DIVISION

Roger A. Herriot, Chief

## Acknowledgments

Many persons participated in the diverse activities of the 1980 census. These acknowledgments generally reflect staff during the census-taking process. The Bureau was guided by then Director, **Vincent P. Barabba**, and Deputy Director, **Daniel B. Levine**. Primary direction of the census program was performed by **George E. Hall**, Associate Director for Demographic Fields, assisted by **Earle J. Gerson**, then Assistant Director for Demographic Censuses, in conjunction with **Barbara A. Bailar**, Associate Director for Statistical Standards and Methodology, **Howard N. Hamilton**, Assistant Director for Computer Services, **Shirley Kallek**, Associate Director for Economic Fields, **James D. Lincoln**, Associate Director for Administration, **Rex L. Pullin**, Associate Director for Field Operations, and **W. Bruce Ramsay**, Associate Director for Information Technology. The director's staff was assisted by **Peter A. Bounpane** and **Sherry L. Courtland**.

Responsibility for developing the population portion of the 1980 census questionnaire content and designing the tabulations was in the Population Division, under the supervision of **Meyer Zitter**, then Chief, **Paula J. Schneider**, Staff Assistant for Census Programs, **Roger A. Herriot**, **Nampao D. McKenney**, and **Arthur J. Norton**, Assistant Chiefs. This report was prepared by **Robert C. Speaker**, Chief, Population Distribution Branch, with the assistance of **Sam T. Davis**, **Richard L. Forstall**, and **Joel C. Miller**.

Responsibility for the overall planning, coordinating, and processing of the 1980 census was in the Decennial Census Division under the direction of **Gerald J. Post**, then Acting Chief, assisted by **Marie G. Argana**, **Rachel F. Brown**, **Donald R. Dalzell**, **Leonard Goldberg**, **Earle B. Knapp, Jr.**, and **Roger O. Lepage**.

Data base and generalized system support was developed and provided by Systems Development Division, **Judy M. Bedell**, Chief, under the direction of **John Jerry Bell**, Assistant Chief.

Computer processing was performed in the

Computer Operations Division, **C. Thomas DiNenna**, then Chief, and **John E. Halterman**, Assistant Chief.

The Statistical Methods Division was largely responsible for developing new procedures to obtain a more accurate count of the population. This work was supervised by **Charles D. Jones**, Chief, **David V. Bateman**, **Susan M. Miskura**, and **Robert T. O'Reagan**, Assistant Chiefs.

Geographic programs and plans were developed in the Geography Division under the direction of **Gerald F. Cranford**, then Assistant Chief, **Robert W. Marx** and **Silla G. Tomasi**, Assistant Chiefs, and **Donald I. Hirschfeld**, Special Assistant. **Joseph J. Knott** coordinated geographic operational phases.

Data collection activities were supervised in the Field Division by **Richard C. Burt**, then Chief, under the direction of **Lawrence T. Love** and **Stanley D. Matchett**, then Assistant Chiefs, with the assistance of the directors and assistant directors of the Bureau's regional offices.

The coordination and acquisition of automatic data processing equipment were the responsibility of the Automatic Data Processing Planning Staff, **James R. Pepal**, Chief, under the direction of **Richard L. Pauly**, Deputy Chief.

The system design, technical specifications, construction, and installation of the FOSDIC and Automated Camera Technology System were the responsibility of Technical Services Division, **McRae Anderson**, Chief, assisted by **Robert E. Joseph**, Assistant Chief.

Questionnaire processing procedures were developed in the Decennial Processing Staff, **James S. Werking**, Chief, under the direction of **Harry C. O'Haver**, Assistant Chief. The manual processing and microfilming of the questionnaires were performed at three decennial processing locations as follows: Data Preparation Division, **Don L. Adams**, Chief; Jeffersonville Processing Office, **Robert L. Kirkland**, then Processing Manager; New Orleans Processing Office, **Robert L. Allen**, Chief; and Laguna

Niguel Processing Office, **Robert N. Scheller**, Chief.

Administrative support was provided by the Administrative Services Division, **O. Bryant Benton**, then Acting Chief.

Publications editing, printing, and composition were performed in the Publications Services Division, **Raymond J. Koski**, Chief, under the direction of **Milton S. Andersen**, **Arlene C. Duckett**, and **Gerald A. Mann**.

User services were provided by the Data User Services Division under the supervision of **Michael G. Garland**, Chief, and **Marshall L. Turner**, Assistant Chief.

Many other persons participated in the various activities of the 1980 census. For a list of key personnel, refer to the *History of the 1980 Census of Population and Housing*, (PHC80-R2).

### Library of Congress Cataloging in Publication Data

1980 census of population. Volume 1, Characteristics of the population.

PC80-1-

Issued September 1981—

Partial contents: ch. A. Number of inhabitants v. — ch. B. General population characteristics v. — ch. C. General social and economic characteristics v. — ch. D. Detailed population characteristics v.

1. United States—Census, 20th, 1980. 2. United States—Population—Statistics. I. United States. Bureau of the Census. II. Title: Characteristics of the population.

HA215.A13 312'.0973 81-607950 AACR2

For sale by Superintendent of Documents, U.S. Government Printing Office, Washington, D.C. 20402, or any U.S. Department of Commerce district office. Postage stamps not acceptable; currency submitted at sender's risk. Remittances from foreign countries must be by international money order or by draft on a U.S. bank.

## APPENDIXES

A. Area Classifications . . . . .	A-1
B. General Enumeration and Processing Procedures . . . . .	B-1
C. Accuracy of the Data . . . . .	C-1

## Introduction

GENERAL . . . . .	III
CONTENTS OF THE REPORT . . .	III
SYMBOLS AND GEOGRAPHIC ABBREVIATIONS . . . . .	III

### GENERAL

This report presents statistics from the 1980 Census of Population on the number of inhabitants of the State, classified by urban and rural residence and by size of place; its counties or comparable areas, county subdivisions, incorporated places, census designated places, standard metropolitan statistical areas, standard consolidated statistical areas, and urbanized areas; and certain other geographic areas of the State. The abbreviated identification for this report is PC80-1-A (i.e., Population Census, 1980-Volume 1-Chapter A) followed by a number representing the State. Legal provision for this census, which was conducted as of April 1, 1980, was made in the Act of Congress of August 31, 1954 (amended August 1957, December 1975, and October 1976), which codified Title 13, United States Code.

A large portion of the information compiled from the 1980 Census of Population will appear in Volume 1, *Characteristics of the Population*, of which this report is part.

The 1980 census figures presented here may differ from those shown in the *Advance Reports*, PHC80-V, and in the Public Law 94-171 redistricting data products. The changes reflect corrections of errors found after the PHC80-V reports and P.L. 94-171 materials were prepared. The changes may affect any geographic area shown in this report.

The content and procedures of the 1980 census were determined after evaluation of the results of the 1970 census, consultation with a wide variety of users of census data, and extensive field testing. A number of changes were introduced in

1980 to improve the usefulness of the census results. The changes do not, however, affect to any appreciable extent the comparability between the 1980 data and the 1970 data shown in this report.

More detailed information on the technical and procedural matters covered in the text of this report can be obtained by writing to the Director, Bureau of the Census, Washington, D.C. 20233. Such information will also appear in other publications of the 1980 census.

### CONTENTS OF THE REPORT

This report contains text (this introduction and three appendixes), a table of contents, charts, 13 detailed tables, and maps. A map of the State appears after the table of contents and shows county names and boundaries, the names and boundaries of standard metropolitan statistical areas (SMSA's) and standard consolidated statistical areas (SCSA's), the names and locations of all places with a population of 25,000 or more, and SMSA central cities with fewer than 25,000 inhabitants. Then follow two pages of charts that precede the 13 tables. Each table is identified by a table number and title. The "stubhead" at the left under the title defines the types of geographic areas for which data are shown in the particular table and is considered part of the table title.

The tables are followed by a map section which includes:

- A "County Location Index" which presents the reference coordinates and map section numbers for each county on the county subdivision map, the legend to the county subdivision map, and a State map outlining the geographic area covered by each county subdivision map section.
- A county subdivision map, often covering several pages, that shows the names and boundaries of counties

(or equivalent areas), their subdivisions, and places, as recognized by the Census Bureau in the published tables.

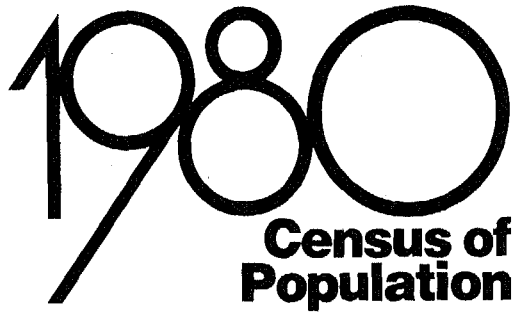
- One map for each urbanized area in the State which shows the names and boundaries of all States, counties, county subdivisions, and places in the area, as well as the extent of territory defined as "urbanized." The report for each State containing part of a multi-State urbanized area includes the map for the entire urbanized area.

Appearing last in the report are the appendixes. Appendix A describes the various area classifications (e.g., urban and rural residence, census designated places, urbanized areas). Appendix B explains the residence rules used in counting the population and describes the data collection and processing procedures. Appendix C presents information on the sources of error in the data.

### SYMBOLS AND GEOGRAPHIC ABBREVIATIONS

The following symbols and geographic abbreviations are used in the tables:

- A dash "--" represents zero or a percent which rounds to less than 0.1.
- Three dots "... " mean not applicable.
- (NA) means not available.
- A minus sign preceding a figure denotes decrease.
- The prefix "r" indicates that the count has been revised since publication of 1970 census reports, or that the area was erroneously omitted, or that the area was not shown in the correct geographic relationship in the 1970 census reports.
- CDP is census designated place.
- SCSA is standard consolidated statistical area.
- SMSA is standard metropolitan statistical area.
- (unorg.) is unorganized territory.



# Number of Inhabitants

## NORTH DAKOTA

PC80-1-A36

### Contents

(Page numbers listed here omit the State prefix number which appears as part of the page number for each page. The prefix for this State is 36)

MAPS	Page
Standard Metropolitan Statistical Areas, Counties, and Selected Places. . . . .	3
County Location Index . . . . .	32
County Subdivisions and Places. . . . .	33
Urbanized Areas . . . . .	37

### CHARTS

Total Population and Percent Change From Preceding Census for the State: 1900 to 1980. . . . .	4
Population and Percent Change by Type of Residence: 1980 and 1970 . . . . .	4
Percent Distribution by Type of Residence for the State: 1980 and 1970 . . . . .	5
A. Urban and Rural Residence	
B. Inside and Outside Standard Metropolitan Statistical Areas (SMSA's)	

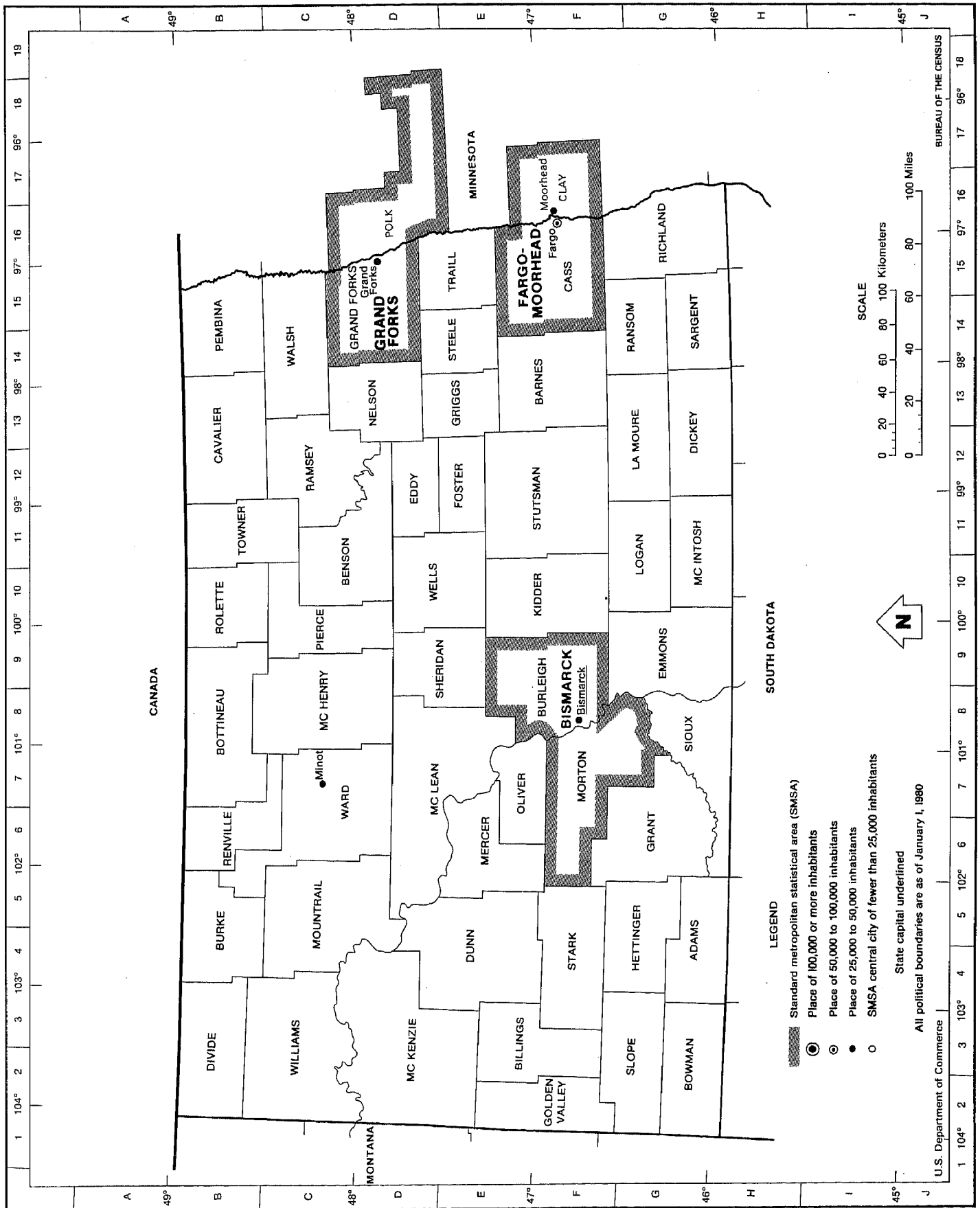
### TABLES

1. Population of the State: Earliest Census to 1980 . . . . .	7
Urban and Rural	
2. Land Area and Population: 1930 to 1980 . . . . .	8
Counties	
3. Population of Counties by Urban and Rural Residence: 1980 and 1970 . . . . .	9
Counties	
4. Population of County Subdivisions: 1960 to 1980. . . . .	10
County Subdivisions	

### TABLES

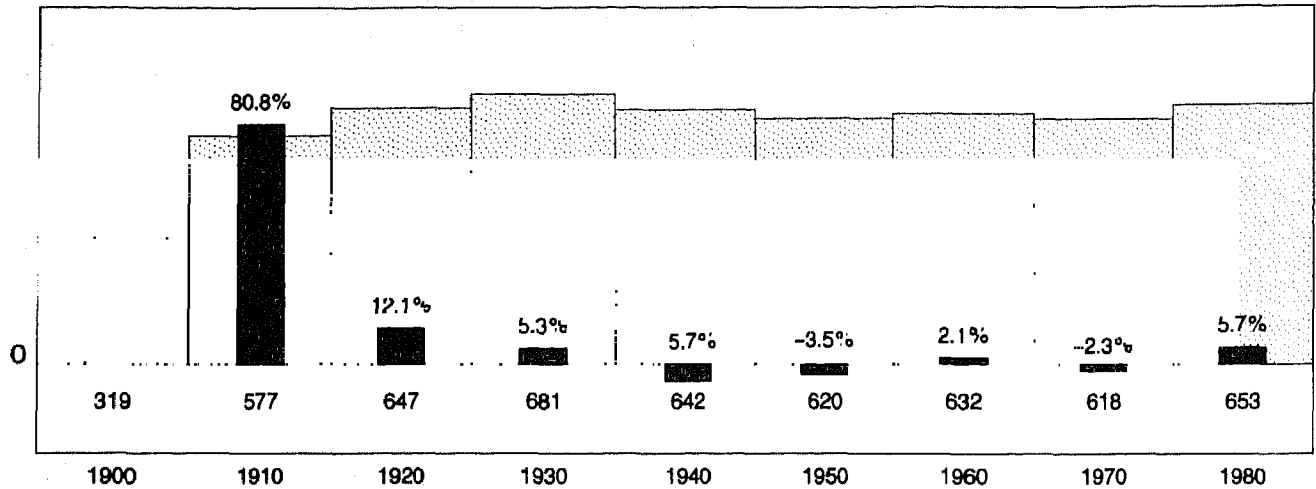
	Page
5. Population of Places: 1960 to 1980 . . . . .	22
Incorporated Places	
Census Designated Places	
6. Rank and Population of Incorporated Places of 5,000 or More in 1980 and 1970 . . . . .	24
Incorporated Places	
7. Population by Size of Place: 1980 and 1970. . . . .	24
The State	
Urbanized Areas	
8. Population by Urban and Rural Residence: 1930 to 1980 . . . . .	25
Size of Place	
9. Population Inside and Outside Standard Metropolitan Statistical Areas (SMSA's) by Urban and Rural Residence: 1980. . . . .	26
The State	
Inside SMSA's	
Outside SMSA's	
10. Population Inside and Outside Standard Metropolitan Statistical Areas (SMSA's) by Size of Place: 1980 . . . . .	28
The State	
Inside SMSA's	
Outside SMSA's	
11. Population of Standard Metropolitan Statistical Areas (SMSA's): 1960 to 1980. . . . .	30
Component Parts	
12. Population of Standard Metropolitan Statistical Areas (SMSA's) by Type of Residence: 1980 . . . . .	30
SMSA's	
13. Population of Urbanized Areas: 1980 and 1970 . . . . .	31
Component Parts	

# Standard Metropolitan Statistical Areas, Counties, and Selected Places



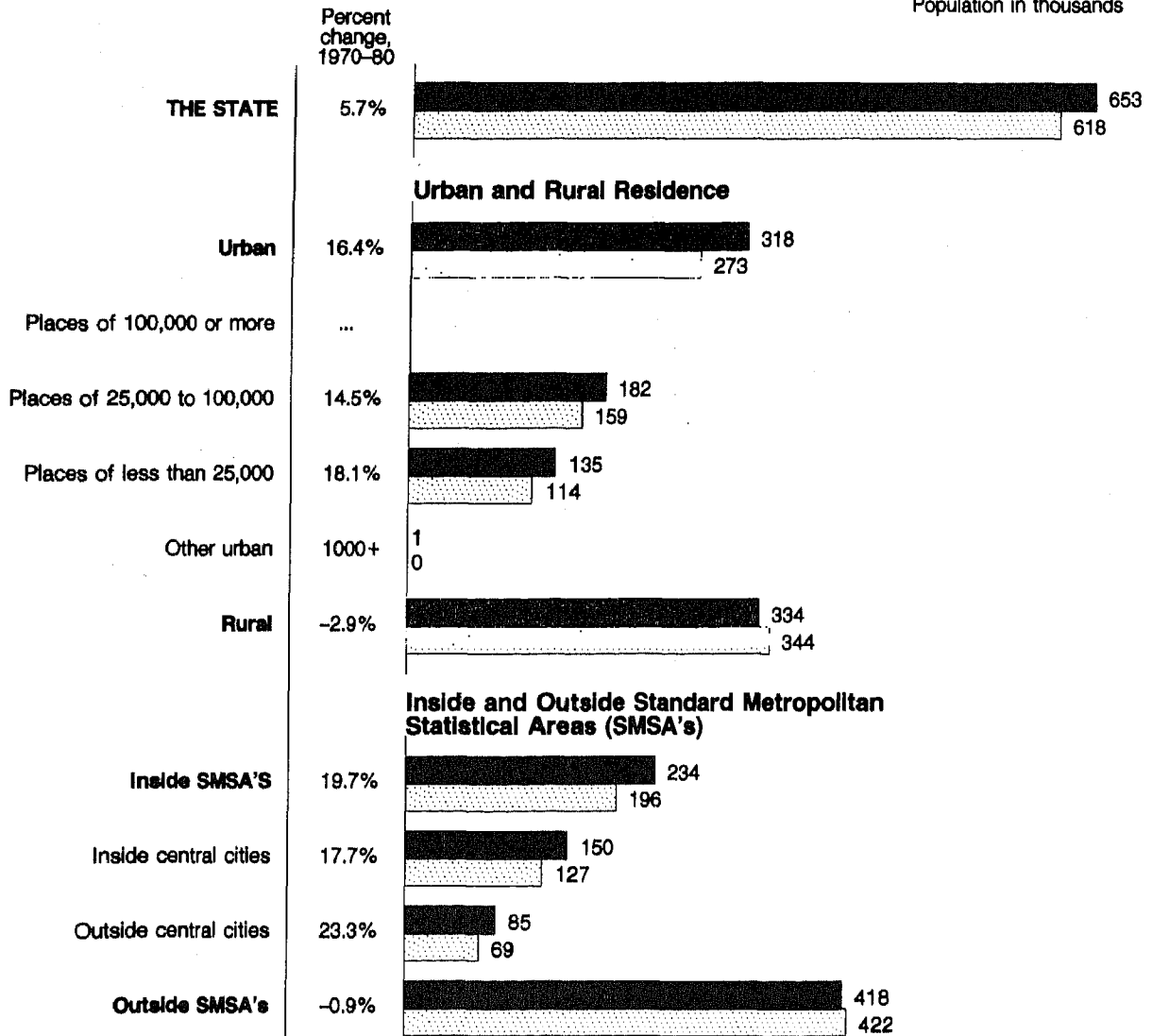
### Total Population and Percent Change From Preceding Census for the State: 1900 to 1980

■ Percent change  
▨ Population in thousands



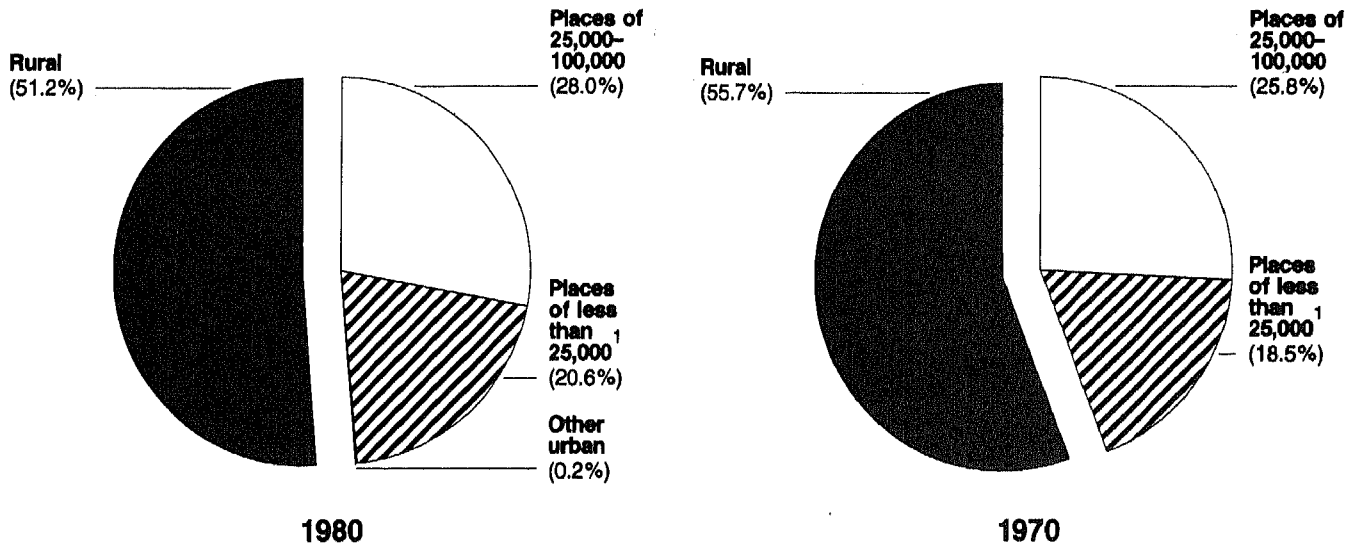
### Population and Percent Change by Type of Residence: 1980 and 1970

■ 1980  
▨ 1970  
Population in thousands



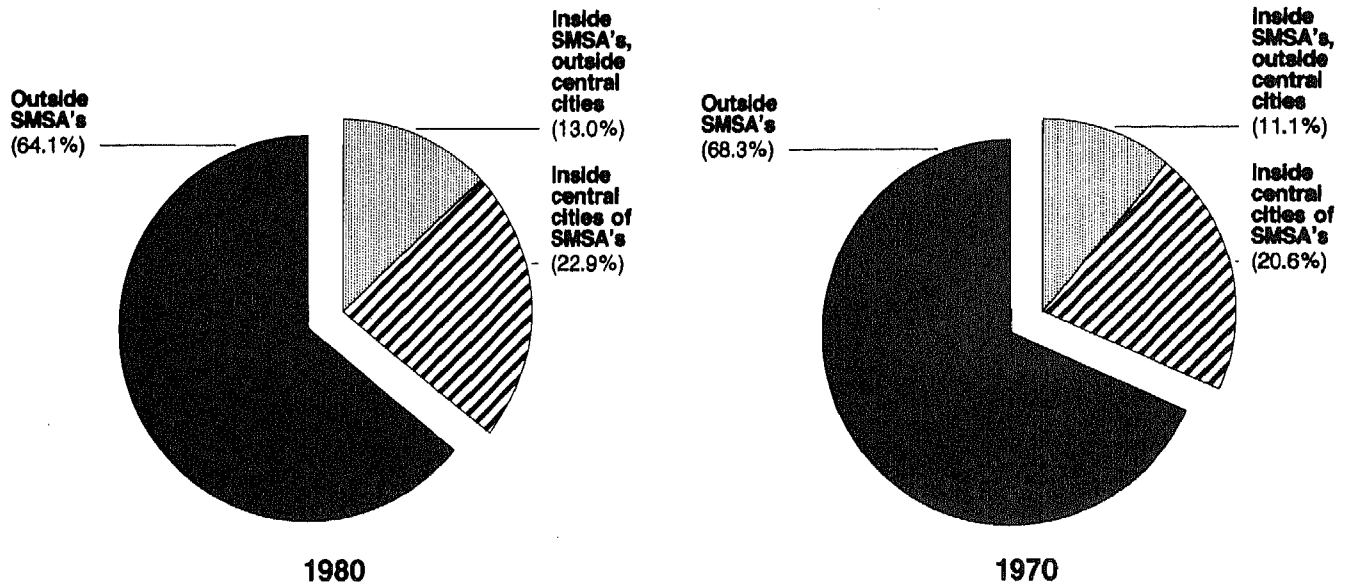
**Percent Distribution by Type of Residence for the State: 1980 and 1970**

**A. URBAN AND RURAL RESIDENCE**



<sup>1</sup>Excludes population of places in rural territory.

**B. INSIDE AND OUTSIDE STANDARD METROPOLITAN STATISTICAL AREAS (SMSA'S)**





CORRECTION NOTE

The official 1980 census counts of total population shown in this report supersede counts issued previously. Corrections to the figures were made after the counts were provided to the State for redistricting purposes and released in Advance Report PHC80-V for this State.

Shown below are corrections to the 1980 census counts of the total population made after the tabulations for this report were completed. Any additional corrections made after this report is printed are available by writing to Data User Services Division, Customer Service (Corrections), Bureau of the Census, Washington, D.C. 20233.

The 1980 figures shown in this publication are subject to change pending the outcome of the various lawsuits dealing with the census counts.

1980 population

	<u>As shown in</u> <u>the tables</u>	<u>Corrected</u>
Bowman County:		
Adelaida township.....	68	48
Buena Vista township .....	29	42
Fischbein township.....	56	43
Grainbelt township.....	49	61
Rhame township.....	26	46
Talbot township.....	120	108

Table 1. Population of the State: Earliest Census to 1980

[For description of current and previous urban definitions, see appendix A. For meaning of symbols, see Introduction]

Urban and Rural

	The State			Urban				Rural			Percent of total population	
	Total population	Change from preceding census		Places of 2,500 or more	Population	Change from preceding census		Population	Change from preceding census		Urban	Rural
		Number	Percent			Number	Percent		Number	Percent		
Current urban definition:												
1980 (Apr. 1)-----	652 717	34 925	5.7	20	318 310	44 868	16.4	334 407	-9 912	-2.9	48.8	51.2
1970 (Apr. 1)-----	617 792	-14 654	-2.3	18	273 442	50 734	22.8	344 319	-65 419	-16.0	44.3	55.7
1960 (Apr. 1)-----	632 446	12 810	2.1	15	222 708	57 891	35.1	409 738	-45 081	-9.9	35.2	64.8
1950 (Apr. 1)-----	619 636	-22 299	-3.5	13	164 817	...	...	454 819	...	...	26.6	73.4
Previous urban definition:												
1960 (Apr. 1)-----	632 446	12 810	2.1	15	221 694	56 877	34.5	410 752	-44 067	-9.7	35.1	64.9
1950 (Apr. 1)-----	619 636	-22 299	-3.5	13	164 817	32 894	24.9	454 819	-55 193	-10.8	26.6	73.4
1940 (Apr. 1)-----	641 935	-38 910	-5.7	12	131 923	18 617	16.4	510 012	-57 527	-10.1	20.6	79.4
1930 (Apr. 1)-----	680 845	33 973	5.3	12	113 306	25 067	28.4	567 539	8 906	1.6	16.6	83.4
1920 (Jan. 1)-----	646 872	69 816	12.1	12	88 239	25 003	39.5	558 633	44 813	8.7	13.6	86.4
1910 (Apr. 15)-----	577 056	257 910	80.8	10	63 236	39 823	170.1	513 820	218 087	73.7	11.0	89.0
1900 (June 1)-----	319 146	128 163	67.1	4	23 413	12 770	120.0	295 733	115 393	64.0	7.3	92.7
1890 (June 1)-----	190 983	154 074	417.4	2	10 643	7 950	295.2	180 340	146 124	427.1	5.6	94.4
1880 (June 1)-----	36 909	34 504	1000+	1	2 693	2 693	...	34 216	31 811	1000+	7.3	92.7
1870 (June 1)-----	2 405	...	...	-	-	...	...	2 405	...	...	-	100.0

NOTE: 1870 population is of that part of Dakota Territory which now constitutes North Dakota.

Table 2. Land Area and Population: 1930 to 1980

[Counts relate to counties as defined at each census. For meaning of symbols, see Introduction]

Counties	1980 land area		Population									
	Square miles	Square kilometers	1980			Percent change		1970	1960	1950	1940	1930
			Number	Per square mile	Per square kilometer	1970 to 1980	1960 to 1970					
The State	69 300	179 486	652 717	9.4	3.6	5.7	-2.3	617 792	632 446	619 636	641 935	680 845
Adams	988	2 560	3 584	3.6	1.4	-6.5	-13.9	3 832	4 449	4 910	4 664	6 343
Barnes	1 498	3 879	13 960	9.3	3.6	-4.8	-12.3	14 669	16 719	16 884	17 814	18 804
Benson	1 412	3 658	7 944	5.6	2.2	-3.7	-12.6	8 245	9 435	10 675	12 629	13 327
Billings	1 152	2 983	1 138	1.0	0.4	-5.0	-20.8	1 198	1 513	1 777	2 531	3 140
Bottineau	1 668	4 320	9 239	5.5	2.1	-2.7	-16.1	9 496	11 315	12 140	13 253	14 853
Bowman	1 162	3 009	4 229	3.6	1.4	8.4	-6.1	3 901	4 154	4 001	3 860	5 119
Burke	1 118	2 895	3 822	3.4	1.3	-19.4	-19.5	4 739	5 886	6 621	7 653	9 998
Burlingame	1 618	4 191	54 811	33.9	13.1	34.6	19.7	40 714	34 016	25 673	22 736	19 769
Cass	1 767	4 576	88 247	49.9	19.3	19.8	10.0	73 653	66 947	58 877	52 849	48 735
Cavalier	1 507	3 904	7 636	5.1	2.0	-7.0	-18.4	8 213	10 064	11 840	13 923	14 554
Dickey	1 139	2 951	7 207	6.3	2.4	3.3	-14.4	6 976	8 147	9 121	9 696	10 877
Divide	1 288	3 337	3 494	2.7	1.0	-23.4	-18.0	4 564	5 566	5 967	7 086	9 636
Dunn	1 993	5 163	4 627	2.3	0.9	-5.5	-22.9	4 895	6 350	7 212	8 376	9 566
Eddy	634	1 643	3 554	5.6	2.2	-13.4	-16.9	4 103	4 936	5 372	5 741	6 346
Emmons	1 499	3 883	5 877	3.9	1.5	-18.4	-14.9	7 200	8 462	9 715	11 699	12 467
Foster	640	1 658	4 611	7.2	2.8	-4.6	-9.9	4 832	5 361	5 337	5 824	6 353
Golden Valley	1 003	2 597	2 391	2.4	0.9	-8.4	-15.8	2 611	3 100	3 499	3 498	4 122
Grand Forks	1 440	3 730	66 100	45.9	17.7	8.2	25.5	61 102	48 677	39 443	34 518	31 956
Grant	1 660	4 299	4 274	2.6	1.0	-14.7	-19.8	5 009	6 248	7 114	8 264	10 134
Griggs	708	1 834	3 714	5.2	2.0	-11.2	-16.7	4 184	5 023	5 460	5 818	6 889
Hettinger	1 133	2 935	4 275	3.8	1.5	-15.8	-19.7	5 075	6 317	7 100	7 457	8 796
Kidder	1 362	3 528	3 833	2.8	1.1	-12.1	-19.0	4 362	5 386	6 168	6 692	8 031
La Motre	1 150	2 979	6 473	5.6	2.2	-9.0	-18.2	7 117	8 705	9 498	10 298	11 517
Logan	1 000	2 590	3 493	3.5	1.3	-17.7	-20.9	4 245	5 369	6 357	7 561	8 089
McHenry	1 887	4 888	7 858	4.2	1.6	-12.5	-19.1	8 977	11 099	12 556	14 034	15 439
McIntosh	984	2 549	4 900	4.9	1.9	-13.4	-17.3	5 545	6 702	7 590	8 984	9 621
McKenzie	2 754	7 132	7 132	2.6	1.0	16.4	-16.0	6 127	7 296	6 849	8 426	9 709
McLean	2 065	5 349	12 383	6.0	2.3	10.1	-19.8	11 251	14 030	18 824	16 082	17 991
Mercer	1 044	2 705	9 404	9.0	3.5	52.3	-9.3	6 175	6 805	8 686	9 611	9 516
Morton	1 920	4 974	25 177	13.1	5.1	24.0	-3.2	20 310	20 992	19 295	20 184	19 647
Mountain	1 837	4 757	7 679	4.2	1.6	-9.0	-16.3	8 437	10 077	9 418	10 482	13 544
Nelson	991	2 567	5 233	5.3	2.0	-9.9	-17.4	5 807	7 034	8 090	9 129	10 203
Oliver	723	1 872	2 495	3.5	1.3	7.5	-11.0	2 322	2 610	3 091	3 859	4 262
Pembina	1 120	2 901	10 399	9.3	3.6	-3.1	-17.1	10 728	12 946	13 990	15 671	14 757
Pierce	1 037	2 686	6 166	5.9	2.3	-2.5	-14.5	6 323	7 394	8 326	9 208	9 074
Ramsay	1 241	3 213	13 048	10.5	4.1	1.0	-3.9	12 915	13 443	14 373	15 626	16 252
Ransom	862	2 232	6 698	7.8	3.0	-5.7	-12.1	7 102	8 078	8 876	10 061	10 983
Renville	874	2 264	3 608	4.1	1.6	-5.7	-18.5	3 828	4 698	5 405	5 533	7 263
Richland	1 436	3 719	19 207	13.4	5.2	6.2	-3.9	18 089	18 824	19 865	20 519	21 008
Rolette	914	2 368	12 177	13.3	5.1	5.4	8.5	11 549	10 641	11 102	12 583	10 760
Sargent	858	2 221	5 512	6.4	2.5	-7.2	-13.4	5 937	6 856	7 616	8 693	9 298
Sheridan	990	2 563	2 819	2.8	1.1	-12.8	-25.7	3 232	4 350	5 253	6 616	7 373
Sioux	1 099	2 846	3 620	3.3	1.3	-0.3	-0.8	3 632	3 662	3 696	4 419	4 687
Slope	1 219	3 158	1 157	0.9	0.4	-22.0	-21.6	1 484	1 893	2 315	2 932	4 150
Stark	1 338	3 465	23 697	17.7	6.8	20.8	6.3	19 613	18 451	16 137	15 414	15 340
Steele	714	1 848	3 106	4.4	1.7	-17.2	-20.6	3 749	4 719	5 145	6 193	6 972
Stutsman	2 263	5 861	24 154	10.7	4.1	2.6	-6.3	23 550	25 137	24 158	23 495	26 100
Towner	1 036	2 682	4 052	3.9	1.5	-12.8	-17.4	4 645	5 624	6 360	7 200	8 393
Trail	861	2 231	9 624	11.2	4.3	0.6	-9.6	9 571	10 583	11 359	12 300	12 600
Walsh	1 290	3 340	15 371	11.9	4.6	-5.4	-9.7	16 251	17 997	18 859	20 747	20 047
Ward	2 041	5 287	58 392	28.6	11.0	-0.3	24.4	58 560	47 072	34 782	31 981	33 597
Wells	1 288	3 337	6 979	5.4	2.1	-11.1	-15.0	7 847	9 237	10 417	11 198	13 285
Williams	2 074	5 371	22 237	10.7	4.1	15.2	-12.5	19 301	22 051	16 442	16 315	19 553

Table 3. Population of Counties by Urban and Rural Residence: 1980 and 1970

(Counts relate to counties as defined at each census. For meaning of symbols, see Introduction)

Counties	Urban				Rural				Percent change, 1970 to 1980			
	1980			1970	1980			1970				
	Total	Percent of total population	Inside urbanized areas		Outside urbanized areas	Total	Places of 1,000 to 2,500			Places of less than 1,000	Other rural	
The State	318 310	48.8	176 844	141 466	273 442	16.4	334 407	70 531	76 067	187 809	344 319	-2.9
Adams	-	-	-	-	-	-	3 584	1 739	445	1 400	3 832	-6.5
Barnes	7 774	55.7	-	7 774	7 843	-0.9	6 186	-	1 579	4 607	6 826	-9.4
Benson	-	-	-	-	-	-	7 944	-	2 603	5 341	8 245	-3.7
Billings	-	-	-	-	-	-	1 138	-	94	1 044	1 198	-5.0
Bottineau	2 829	30.6	-	2 829	2 760	2.5	6 410	-	2 144	4 266	6 786	-4.8
Bowman	-	-	-	-	-	-	4 229	2 071	660	1 498	3 901	8.4
Burke	-	-	-	-	-	-	3 822	-	2 151	1 671	4 739	-19.4
Burlingame	45 441	82.9	45 441	-	34 703	30.9	9 370	-	1 209	8 161	6 011	55.9
Cass	71 974	81.6	71 974	-	58 581	22.9	16 273	1 672	5 027	9 574	15 072	8.0
Cavaller	-	-	-	-	-	-	7 636	2 335	1 417	3 884	8 213	-7.0
DeWitt	-	-	-	-	-	-	-	-	-	-	-	-
Dickey	-	-	-	-	-	-	7 207	4 079	314	2 814	6 976	3.3
Divide	-	-	-	-	-	-	3 494	1 469	441	1 584	4 564	-23.4
Dunn	-	-	-	-	-	-	4 627	-	1 514	3 113	4 895	-5.5
Eddy	-	-	-	-	-	-	3 554	1 791	307	1 456	4 103	-13.4
Emmons	-	-	-	-	-	-	5 877	1 561	1 102	3 214	7 200	-18.4
Foster	2 641	57.3	-	2 641	-	...	1 970	-	277	1 693	4 832	-59.2
Golden Valley	-	-	-	-	-	-	2 391	1 381	187	823	2 611	-8.4
Grand Forks	53 155	80.4	43 765	9 390	49 482	7.4	12 945	2 764	2 298	7 883	11 620	11.4
Grant	-	-	-	-	-	-	4 274	-	1 810	2 464	5 009	-14.7
Griggs	-	-	-	-	-	-	3 714	1 308	494	1 912	4 184	-11.2
Hettinger	-	-	-	-	-	-	4 275	1 315	1 122	1 838	5 075	-15.8
Kidder	-	-	-	-	-	-	3 833	-	1 669	2 164	4 362	-12.1
La Moure	-	-	-	-	-	-	6 473	1 077	2 002	3 394	7 117	-9.0
Logan	-	-	-	-	-	-	3 493	1 103	595	1 795	4 245	-17.7
McHenry	-	-	-	-	-	-	7 858	1 101	2 684	4 073	8 977	-12.5
McIntosh	-	-	-	-	-	-	4 800	2 537	490	1 773	5 545	-13.4
McKenzie	-	-	-	-	-	-	7 132	2 119	563	4 450	6 127	16.4
McLean	-	-	-	-	-	-	12 383	4 926	2 328	5 129	11 251	10.1
Mercer	2 908	30.9	-	2 908	-	...	6 496	2 365	1 603	2 528	6 175	5.2
Morton	15 664	62.2	15 664	-	11 093	41.2	9 513	3 284	556	5 673	9 217	3.2
Mountrail	-	-	-	-	-	-	7 679	4 025	521	3 133	8 437	-9.0
Nelson	-	-	-	-	-	-	5 233	-	3 004	2 229	5 776	-9.4
Oliver	-	-	-	-	-	-	2 495	-	900	1 595	2 322	7.5
Pembina	-	-	-	-	-	-	10 399	4 016	2 328	4 055	10 728	-3.1
Pierce	3 335	54.1	-	3 335	2 889	15.4	2 831	-	253	2 578	3 434	-17.6
Ramsey	7 442	57.0	-	7 442	7 078	5.1	5 606	-	1 205	4 401	5 837	-4.0
Ransom	-	-	-	-	-	-	6 698	3 423	316	2 959	7 102	-5.7
Renville	-	-	-	-	-	-	3 608	1 049	878	1 681	3 828	-5.7
Richland	9 064	47.2	-	9 064	7 076	28.1	10 143	1 158	3 242	5 743	11 013	-7.9
Rolette	-	-	-	-	-	-	12 177	3 341	1 724	7 112	11 549	5.4
Sargent	-	-	-	-	-	-	5 512	-	2 770	2 742	5 937	-7.2
Sheridan	-	-	-	-	-	-	2 819	-	1 060	1 759	3 232	-12.8
Sioux	-	-	-	-	-	-	3 620	-	1 182	2 438	3 632	-0.3
Slope	-	-	-	-	-	-	1 157	-	233	924	1 484	-22.0
Stark	15 924	67.2	-	15 924	12 405	28.4	7 773	1 274	1 549	4 950	7 208	7.8
Steele	-	-	-	-	-	-	3 106	-	1 355	1 751	3 749	-17.2
Stutsman	16 280	67.4	-	16 280	15 385	5.8	7 874	-	1 606	6 268	8 165	-3.6
Towner	-	-	-	-	-	-	4 052	1 496	749	1 807	4 645	-12.8
Trall	-	-	-	-	2 554	-100.0	9 624	3 855	2 160	3 609	7 017	37.2
Walsh	5 293	34.4	-	5 293	5 946	-11.0	10 078	1 844	2 562	5 672	10 305	-2.2
Ward	42 723	73.2	-	42 723	44 367	-3.7	15 669	1 456	3 727	10 486	14 193	10.4
Wells	2 527	36.2	-	2 527	-	...	4 452	-	1 394	3 058	7 847	-43.3
Williams	13 336	60.0	-	13 336	11 280	18.2	8 901	1 597	1 664	5 640	8 021	11.0

Table 4. Population of County Subdivisions: 1960 to 1980

[Total population of a place in two or more county subdivisions appears in table 5. Counts relate to county subdivisions and places as defined at each census. For meaning of symbols, see Introduction]

County Subdivisions	1980	1970	1960	County Subdivisions	1980	1970	1960
The State	652 717	617 792	632 446	Benson County—Con.			
Adams County <sup>1</sup>	3 584	3 832	4 449	Esmond city	337	416	420
Beisigl township	37	44	59	Esmond township	114	143	174
Bucyrus city	32	42	60	Fort Totten (unorg.) <sup>2</sup>	1 141	...	...
Bucyrus township	49	60	70	Hesper township	110	111	154
Cedar township	30	57	60	Impark township	71	132	209
Central Adams (unorg.) <sup>1</sup>	91	56	69	Iowa township	35	63	86
Chandler township	23	37	39	Irvine township	63	102	100
Clarmon township	38	50	82	Isabel township	114	138	157
Darling Springs township	42	66	80	Knox city	69	104	122
Duck Creek township	32	55	73	Knox township	52	115	165
East Adams (unorg.) <sup>1</sup>	186	...	...	Lake Ibsen township	41	81	121
Gilstrap township	28	44	61	Lallie township	290	129	201
Haynes city	58	53	111	Lallie North (unorg.) <sup>3</sup>	21	...	...
Hettinger city <sup>1</sup>	1 739	1 655	1 769	Leads city <sup>3</sup>	678	626	797
Hettinger township <sup>1</sup>	192	168	158	Leeds township <sup>3</sup>	101	85	158
Holden township	43	55	71	Lohnes township	13	33	45
Lemmon (unorg.) <sup>1</sup>	47	87	75	McClellan township	64	95	95
Lightning Creek township	27	33	47	Maddock city	677	708	740
Maine township	34	44	70	Minco township	51	45	63
North Lemmon township	109	146	201	Minnewaukan city <sup>3</sup>	461	496	420
Orange township	48	53	82	Mission township	857	691	582
Reeder city	355	306	321	Normania township	74	91	150
Reeder township	63	90	106	North Viking township	95	103	145
Scott township	139	142	136	Oberon city	150	151	248
South Fork township	14	36	55	Oberon township	137	153	227
Taylor Butte township	41	40	69	Pleasant Lake township	104	127	122
Whetstone township	41	49	43	Rich Valley township	93	109	152
Wolf Butte township	46	60	80	Riggin township	92	111	113
Barnes County <sup>2</sup>	13 960	14 669	16 719	Rock township	58	81	99
Alta township	116	163	218	South Viking township	80	103	121
Anderson township	70	107	100	Twin Lake township	77	106	123
Ashfobula township	100	130	135	Twin Tree township	53	58	85
Baldwin township	56	66	114	Warwick city	108	168	204
Binghamton township	118	145	225	Warwick township	54	88	81
Brimer township	82	68	109	West Antelope township	60	75	109
Cuba township	93	107	130	West Bay township <sup>3</sup>	114	182	133
Dazey city	143	128	226	Wood Lake township	140	344	363
Dazey township	76	90	111	York city	69	102	148
Eckelson township	146	160	210	York township	50	72	111
Edna township	100	104	129	Billings County <sup>4</sup>	1 138	1 198	1 513
Ellsbury township	77	90	101	Medora city	94	129	133
Fingal city	151	166	190	North Billings (unorg.) <sup>4</sup>	717	...	...
Getchell township	75	81	132	South Billings (unorg.) <sup>4</sup>	327	...	...
Grand Prairie township	53	78	129	Bottineau County <sup>5</sup>	9 239	9 496	11 315
Green township	113	143	167	Amity township	69	87	103
Greenland township	92	133	174	Antler city	101	135	210
Hemen township	64	76	105	Antler township	102	115	134
Hobart township	197	172	170	Bentick township	85	62	74
Kathryn city	95	109	142	Blaine township	37	61	65
Lake Town township	78	98	128	Bottineau city <sup>5</sup>	2 829	2 760	2 613
Leal city	45	41	70	Brander township	65	89	112
Litchville city	251	294	345	Cecil township	42	56	93
Mansfield township	43	72	119	Chatfield township	74	90	106
Marsh township	209	154	149	Cordelia township	119	132	111
Meadow Lake township	97	115	166	Cut Bank township	102	101	134
Minnie Lake township	84	86	133	Dalen township	137	151	158
Nelson township	87	94	152	Eidsvold township	93	122	184
Nottimier township	117	102	169	Elms township	74	90	108
Name city	67	103	145	Elysian township	89	82	114
Norma township	79	120	160	Gardena city	66	84	113
Oakhill township	119	127	171	Haram township	98	129	156
Oriska city <sup>2</sup>	125	128	148	Hastings township <sup>5</sup>	121	96	147
Oriska township <sup>2</sup>	128	104	139	Hoffman township	15	30	51
Pierce township	97	140	151	Homen township	124	141	178
Pillsbury city	46	50	76	Kane township	115	111	154
Potter township	97	83	130	Kramer city	84	125	175
Raritan township	138	148	250	Landa city	62	61	110
Rogers city	68	96	119	Lansford city	294	296	382
Rogers township	70	99	96	Lansford township	92	77	119
Rosebud township	86	106	156	Lewis township	50	49	80
Sanborn city	237	255	263	Lordsburg township	53	66	102
Sibley city <sup>2</sup>	21	20	22	Maxbass city <sup>5</sup>	141	174	218
Sibley Trail township <sup>2</sup>	118	146	172	Mount Rose township	63	81	117
Skandia township	76	109	164	Newborg township	74	66	111
Spring Creek township	87	136	193	Newburg city <sup>5</sup>	151	125	158
Springvale township	112	124	166	Oak Creek township	49	61	70
Stewart township	117	104	166	Oak Valley township	83	82	104
Svea township	78	84	158	Omeme city	10	5	11
Thordenskjold township	107	137	251	Ostby township	102	115	136
Tower City city (pt.)	-	2	...	Overly city	25	28	65
Uxbridge township	113	118	162	Peabody township	33	35	66
Valley township <sup>2</sup>	565	...	...	Pickering township <sup>5</sup>	200	189	237
Valley City city <sup>2</sup>	7 774	7 843	7 809	Renville township	50	67	81
Weimer township	77	103	110	Richburg township <sup>5</sup>	99	126	165
Wimbleton city	330	337	402	Roland township	433	274	306
Benson County <sup>2</sup>	7 944	8 245	9 435	Russell city	18	14	25
Albert township	83	109	167	Scandia township	108	130	202
Arne township	85	91	141	Scotia township	84	114	146
Aurora township	51	96	118	Sergius township	141	134	163
Beaver township	46	55	72	Sherman township	73	93	124
Brinsmade city	54	36	110	Souris city	122	151	213
Broe township	89	117	127	Starbuck township	40	88	117
Butte Valley township	143	192	228	Stone Creek township	55	62	105
East Park township	51	76	140	Tacoma township <sup>5</sup>	94	102	153
Eldon township	74	86	141	Wayne township	44	58	88
				Wellington township	68	89	104

See footnotes at end of table.

Table 4. Population of County Subdivisions: 1960 to 1980—Con.

[Total population of a place in two or more county subdivisions appears in table 5. Counts relate to county subdivisions and places as defined at each census. For meaning of symbols, see Introduction]

County Subdivisions	1980	1970	1960	County Subdivisions	1980	1970	1960
<b>Bottineau County—Con.</b>				<b>Burleigh County—Con.</b>			
Westhope city <sup>a</sup>	741	705	824	Hoy Creek township <sup>a</sup>	1 658	836	435
Wheaton township	73	80	114	Hazel Grove township	34	49	75
Whitby township	35	42	69	Lein township	32	48	50
Whitton township <sup>a</sup>	462	307	335	Lincoln city <sup>a</sup>	656	...	...
Willow City city	329	403	494	Logan township	50	53	75
Willow Vale township	72	89	103	Long Lake township	144	174	208
<b>Bowman County<sup>b</sup></b>				Lyman (unorg.) <sup>a</sup>	21	...	...
Adeloida township	4 229	3 901	4 154	McKenzie township	108	177	157
Amor township	68	47	61	Menoken township	148	145	162
Bowman city <sup>a</sup>	2 071	1 762	1 730	Missouri township	83	61	68
Bowman township <sup>a</sup>	265	113	97	Morton township	54	48	46
Boyesen township	54	56	62	Naughton township	110	65	75
Buena Vista township	29	49	59	Painted Woods township	115	81	122
Fischbein township	56	73	60	Regan city	71	74	104
Gascoyne city	23	34	50	Rock Hill township	61	66	83
Gascoyne township	30	42	40	Schrunk township	34	46	58
Gem township	24	33	37	Sibley Butte township	52	42	43
Goldfield township	56	83	94	Steiber township	35	63	60
Grainbelt township	49	58	64	Sterling township	177	155	201
Grand River township	32	34	41	Taft township	48	50	62
Haley township	46	61	87	Telfer township	94	74	108
Hart township	42	28	49	Thelma township	33	45	47
Ladd township	25	29	40	Trygg township	57	85	107
Langberg township	26	39	36	West Burleigh (unorg.) <sup>a</sup>	628	...	...
Marien township	24	20	39	Wild Rose township	54	61	73
Minnehaha township	35	37	40	Wilson township	62	75	105
Nebo township	44	36	72	Wilton city (pt.)	262	116	105
Rhame city	222	206	254	Wing city	220	223	303
Rhame township	26	59	89	Wing township	42	43	83
Scranton city <sup>a</sup>	415	360	358	<b>Cass County<sup>a</sup></b>			
Scranton township <sup>a</sup>	107	95	105	Addison township	88 247	73 653	66 947
Star township	44	60	63	Alice city	103	113	163
Stillwater township	41	54	62	Amenia city <sup>a</sup>	62	83	124
Sunny Slope township	13	28	29	Amenia township <sup>a</sup>	93	80	117
Talbot township	120	82	92	Argusville city	135	164	182
West Bowman (unorg.) <sup>a</sup>	151	...	...	Arthur city	147	118	118
Whiting township	56	101	93	Arthur township	445	412	325
<b>Burke County<sup>c</sup></b>				Arthur township	103	120	209
Battleview township	3 822	4 739	5 886	Ayr city <sup>a</sup>	42	48	81
Bowbells city	167	179	145	Ayr township <sup>a</sup>	96	123	138
Bowbells township	587	584	687	Bornes township <sup>a</sup>	490	1 221	1 230
Carter township	53	82	87	Bell township	56	95	114
Clayton township	31	53	87	Berlin township	147	148	167
Cleary township	49	64	76	Brierwood city <sup>a</sup>	47	...	...
Columbus city	53	60	81	Buffalo city	226	241	234
Colville township	325	465	672	Buffalo township	99	148	121
Dale township	68	71	93	Casselton city <sup>a</sup>	1 661	1 485	1 394
Diamond township	59	108	145	Casselton township <sup>a</sup>	111	120	188
Fay township	40	20	37	Clifton township	113	146	180
Flaxton city	57	70	166	Cornell township	84	100	130
Foothills township	182	286	375	Davenport city	195	147	143
Forthun township	58	91	91	Davenport township	165	150	203
Garness township	27	39	58	Dows township	93	108	136
Harmonious township	93	104	105	Durbin township	124	128	133
Kandiyohi township	45	78	80	Eldred township	124	129	225
Keller township	43	82	99	Empire township	150	150	191
Lakeview township	27	40	61	Enderlin city (pt.) <sup>a</sup>	11	...	...
Larson city	30	38	56	Erie township	136	105	238
Leaf Mountain township	21	35	62	Everest township	122	142	159
Lignite city <sup>a</sup>	61	80	92	Fargo city <sup>a</sup>	61 383	53 363	46 662
Lucy township	332	354	355	Fargo township	10	133	195
Minnesota township	54	71	87	Frontier city <sup>a</sup>	160	...	...
North Burke (unorg.) <sup>a</sup>	43	69	87	Gardner city	94	96	107
North Star township	8	...	...	Gardner township	114	146	184
Portal city	83	101	133	Gill township	114	140	173
Portal township	238	251	351	Grandin city (pt.)	210	187	147
Powers Lake city	69	99	124	Gunkel township	93	113	155
Richland township	466	523	633	Harmony township	110	165	166
Roseland township	58	89	75	Harwood city <sup>a</sup>	326	...	...
Short Creek township	31	35	48	Harwood township <sup>a</sup>	530	434	354
Soo township	74	103	148	Highland township	130	123	181
Thorson township	50	84	97	Hill township	76	93	145
Vale township <sup>a</sup>	51	56	65	Horace city <sup>a</sup>	494	276	178
Vanville township	37	69	109	Howes township	98	106	162
Ward township	55	50	50	Hunter city	369	362	446
<b>Burleigh County<sup>a</sup></b>				Hunter township	117	153	164
Apple Creek township <sup>a</sup>	97	145	175	Kindred city	568	495	580
Bismarck city <sup>a</sup>	54 811	40 714	34 016	Kinyon township	119	126	135
Bismarck (unorg.) <sup>a</sup>	843	270	262	Lake township	62	78	94
Boyd township	44 485	34 703	27 670	Leonard city	289	221	232
Canfield township	2 233	...	...	Leonard township	142	124	160
Christiana township	94	99	92	Maple River township	155	184	228
Clear Lake township	31	50	57	Mapleton city	306	219	180
Crofte township	53	49	71	Mapleton township <sup>a</sup>	244	217	150
Cromwell township	48	66	86	Noble township	107	129	164
Driscoll township	123	108	141	Normanna township	331	278	304
East Burleigh (unorg.) <sup>b</sup>	43	35	52	North River city <sup>a</sup>	65	...	...
Ecklund township	223	215	251	Page city	329	367	432
Estherville township	90	...	...	Pleasant township	78	73	142
Florence Lake township	124	142	175	Poniac township <sup>a</sup>	398	326	351
Frances township	63	73	97	Prairie Rose city <sup>a</sup>	140	145	186
Ghylin township	41	51	61	Reed township <sup>a</sup>	76	...	...
Gibbs township <sup>a</sup>	37	34	52	Relle's Acres city <sup>a</sup>	255	199	223
Glenview township	54	75	105	Rich township	848	655	1 373
Grass Lake township	770	302	251	Riverside city <sup>a</sup>	191	...	...
Harriet township <sup>a</sup>	160	116	145		108	107	139
	65	99	104		465	104	93
	88	102	124				

See footnotes at end of table.

Table 4. Population of County Subdivisions: 1960 to 1980—Con.

[Total population of a place in two or more county subdivisions appears in table 5. Counts relate to county subdivisions and places as defined at each census. For meaning of symbols, see Introduction.]

County Subdivisions	1980	1970	1960	County Subdivisions	1980	1970	1960
<b>Cass County—Con.</b>				<b>Dickey County—Con.</b>			
Rochester township	76	84	127	Porter township	78	82	119
Rush River township	141	177	192	Potsdam township	55	76	107
Stanley township <sup>9</sup>	1 706	857	506	Riverdale township	116	90	117
Tower township	69	121	128	Spring Valley township	49	81	100
Tower City city (pt.)	293	287	300	Valley township	72	81	86
Walburg township	206	281	327	Van Meter township	121	146	149
Warren township	158	160	186	Whitestone township	46	75	82
Watson township	138	168	193	Wright township	102	128	178
West Fargo city <sup>1</sup>	10 099	5 161	3 328	Yorktown township	69	100	121
Wheatland township	183	225	291	Young township	46	57	91
Wiser township	94	97	133	<b>Divide County<sup>12</sup></b>			
<b>Cavalier County<sup>10</sup></b>				Alexandria township	3 494	4 564	5 566
Alma township	7 636	8 213	10 064	Ambrase city	35	65	90
Alsen city	70	69	81	Ambrase township	60	109	220
Banner township	169	201	228	Blooming Prairie township	57	80	104
Billing township	70	114	132	Blooming Valley township	77	58	90
Birles township	122	81	149	Border township	55	63	99
Bruce township	60	114	152	Burg township	55	78	70
Byron township	74	93	99	Clinton township	57	60	70
Calla city	60	75	101	Coalfield township	26	46	62
Calvin city	61	78	104	Crosby city <sup>12</sup>	65	98	104
Cypress township	96	90	110	Daneville township	1 469	1 545	1 759
Dresden township	93	174	218	De Witt township	76	96	109
Eosby township	96	88	117	Elkhorn township	48	55	51
East Alma township	70	62	113	Fertile Valley township	57	360	267
Elgin township <sup>10</sup>	413	278	288	Fillmore township <sup>12</sup>	43	65	65
Fremont township	119	147	196	Fortuna city	58	68	99
Glenfa township	61	76	95	Frazier township	98	216	185
Gordon township	67	100	113	Frederick township	28	39	45
Grey township	82	98	101	Garnet township	40	80	109
Hannah city	90	145	253	Gooseneck township	42	45	68
Harvey township	85	81	113	Hawkeye township	65	78	106
Hoy township	89	116	182	Hayland township	43	74	67
Henderson township <sup>10</sup>	109	86	149	Lincoln Valley township	48	55	66
Hope township	92	107	142	Long Creek township	31	56	110
Hove Mobile Park city <sup>10</sup>	3	...	...	Mentor township	72	69	85
Huron township	79	97	146	Noonan city	43	53	100
Langdon city <sup>10</sup>	2 335	2 182	2 151	Palmer township	283	403	625
Langdon township	62	67	116	Plumer township	32	34	35
Linden township	65	92	158	Sioux Trail township	15	30	37
Loom township	97	141	158	Smoky Butte township	60	56	70
Loma city	39	85	20	Stoneview township	44	80	98
Manilla township	183	67	109	Troy township	38	49	55
Milton city	195	198	264	Twin Butte township	81	97	93
Minto township	68	71	93	Upland township	38	39	58
Monrose township	121	121	187	Westby township	39	57	95
Moscow township	84	104	121	Writing Rock township	88	93	158
Mount Carmel township	164	236	366	Dunn County <sup>13</sup>	28	37	42
Month city <sup>10</sup>	300	249	213	Dodge city	4 627	4 895	6 350
Nekoma city	102	84	143	Dunn Center city <sup>13</sup>	199	121	226
Nekoma township	90	80	167	Halliday city	170	107	250
North Loma township	38	74	116	Halliday (unorg.) <sup>12</sup>	355	413	509
North Olga township	100	156	209	Killdeer city <sup>14</sup>	1 010	...	...
Osford township	89	131	165	Killdeer (unorg.) <sup>12</sup>	790	615	765
Osnabrock city	222	255	289	South Dunn (unorg.) <sup>12</sup>	1 206	...	...
Osnabrock township <sup>10</sup>	87	115	125	Eddy County <sup>14</sup>	897	...	...
Perry township	105	144	159	Bush township	3 554	4 103	4 936
Saries city (pt.)	102	138	203	Cherry Lake township	80	81	125
Selvert township	53	74	79	Columbia township	56	79	100
South Dresden township	107	120	188	Calvin township	70	94	78
South Olga township	99	115	201	Eddy township	96	109	129
Starlie township	39	55	73	Freeborn township	61	63	92
Trier township	119	124	145	Gates township	142	162	220
Wales city	74	116	151	Grandfield township	103	124	193
Waterloo township	65	129	160	Hillsdale township	62	78	111
West Hope township	107	120	157	Lake Washington township	63	79	91
<b>Dickey County<sup>11</sup></b>				Munster township	54	50	66
Ada township	7 207	6 976	8 147	New Rockford city <sup>14</sup>	88	143	179
Albertha township	101	116	142	New Rockford township <sup>14</sup>	1 791	1 969	2 177
Albion township	42	53	85	Paradise township	141	136	191
Bear Creek township <sup>11</sup>	61	83	126	Pleasant Prairie township	71	93	122
Clement township	208	234	178	Rosefield township	66	80	118
Divide township	172	191	233	Sheldon township	58	97	138
Elden township	108	153	184	Sheyenne city <sup>14</sup>	54	74	86
Ellendale city <sup>11</sup>	1 967	1 517	1 117	Superior township	307	362	423
Ellendale township <sup>11</sup>	163	150	191	Tiffany township	119	138	180
Elm township	88	97	107	Emmons County <sup>15</sup>	72	92	117
Forbes city	84	88	138	Braddock city	5 877	7 200	8 462
Fullerton city	107	110	181	Buchanan Valley township	86	106	141
German township	46	89	116	Campbell township	78	72	84
Grand Valley township	55	99	109	Danbury township	119	143	154
Hamburg township	59	87	122	Hague city	80	117	139
Hudson township	108	106	164	Harling township	127	146	191
James River Valley township	90	87	124	Hazalton city	80	133	191
Kent township	46	60	125	Hazalton township	266	374	451
Kentner township	154	157	223	Linton city <sup>15</sup>	126	151	161
Keystone township	69	69	77	McCully township	1 695	1 695	1 826
Lorraine township	76	94	132	Northeast Emmons (unorg.) <sup>15</sup>	96	99	160
Lovell township	66	80	113	Prairie View township	845	...	...
Ludden city	47	44	59	South Emmons (unorg.) <sup>15</sup>	44	91	96
Maple township	90	126	159	Strasburg city	989	...	...
Merricourt city	17	22	66	Tell township	623	642	612
Monango city	59	112	133	West Emmons (unorg.) <sup>15</sup>	72	95	119
Northwest township	52	70	96	Wood township	616	...	...
Oakes city <sup>11</sup>	2 112	1 742	1 650		69	83	121
Port Emma township	96	114	147				

See footnotes at end of table.