

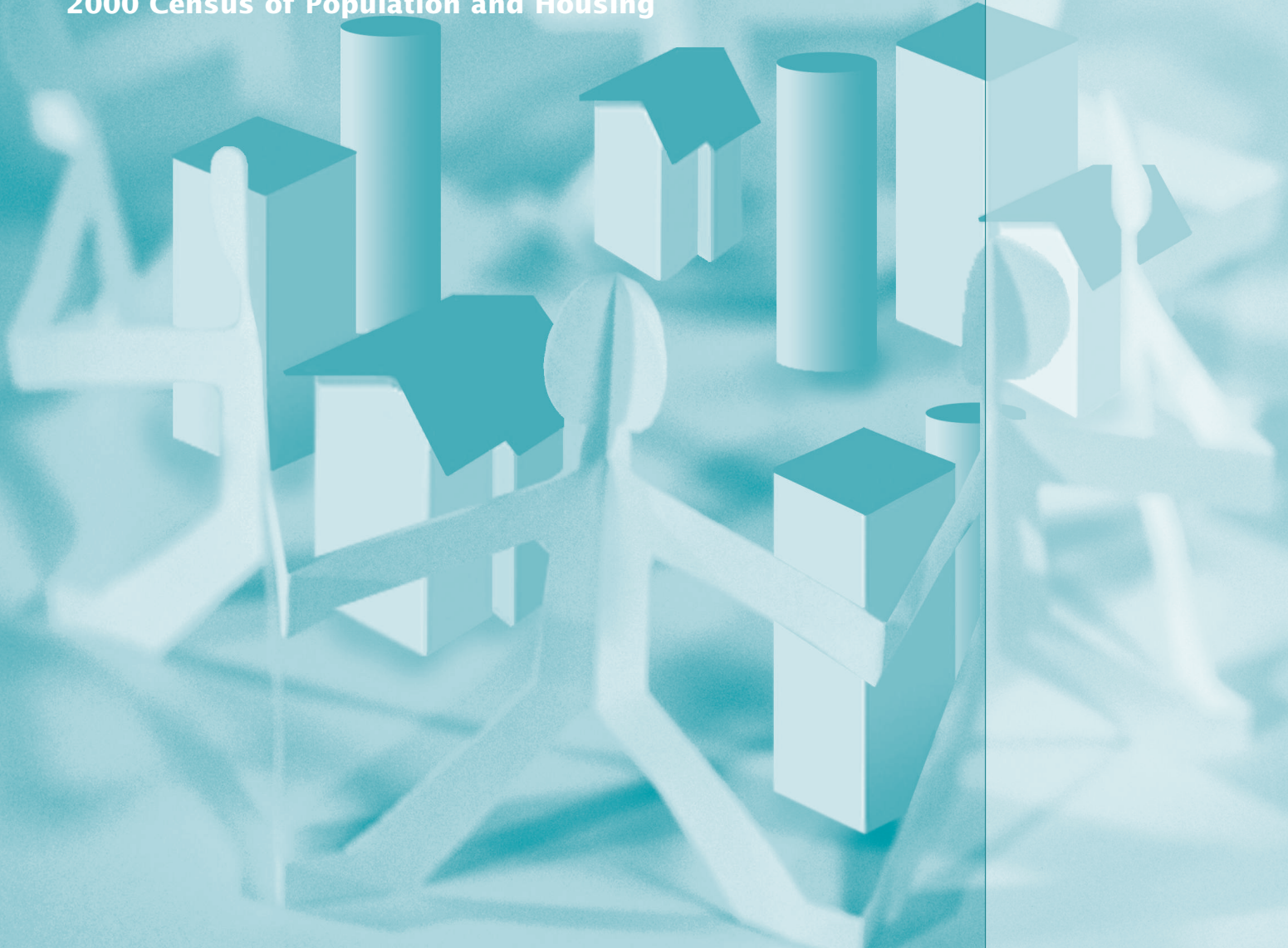
North Dakota: 2000

Summary Population and Housing Characteristics

Issued November 2002

PHC-1-36

2000 Census of Population and Housing



U S C E N S U S B U R E A U

Helping You Make Informed Decisions • 1902-2002

U.S. Department of Commerce
Economics and Statistics Administration
U.S. CENSUS BUREAU

United States
Census
2000

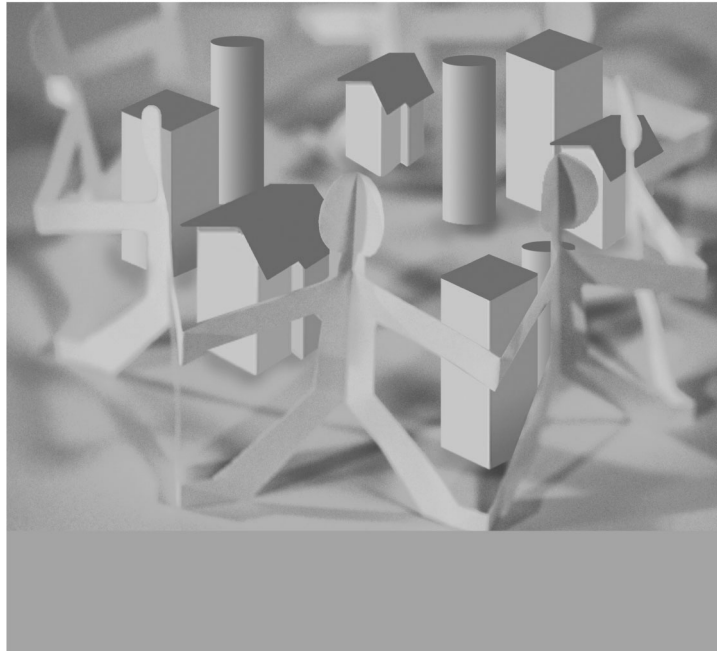
North Dakota: 2000

Issued November 2002

Summary Population and Housing Characteristics

PHC-1-36

2000 Census of Population and Housing



U.S. Department of Commerce

Donald L. Evans,

Secretary

Samuel W. Bodman,

Deputy Secretary

Economics and Statistics Administration

Kathleen B. Cooper,

Under Secretary for

Economic Affairs

U.S. CENSUS BUREAU

Charles Louis Kincannon,

Director

SUGGESTED CITATION

U.S. Census Bureau,
2000 Census of
Population and Housing,
*Summary Population and
Housing Characteristics*,
PHC-1-36, North Dakota
Washington, DC, 2002



**Economics
and Statistics
Administration**

Kathleen B. Cooper,
Under Secretary
for Economic Affairs



U.S. CENSUS BUREAU
Charles Louis Kincannon,
Director

Vacant,
Deputy Director and
Chief Operating Officer

Nancy A. Potok,
Principal Associate Director
and Chief Financial Officer

Vacant,
Principal Associate
Director for Programs

Preston Jay Waite,
Associate Director
for Decennial Census

Nancy M. Gordon,
Associate Director
for Demographic Programs

Cynthia Z.F. Clark,
Associate Director
for Methodology and
Standards

Marvin D. Raines,
Associate Director
for Field Operations

Arnold A. Jackson,
Assistant Director
for Decennial Census

CONTENTS

List of Statistical Tables	v
How to Use This Report	I-1
Table Finding Guide	II-1
User Notes	III-1
Statistical Tables (For a detailed list of statistical tables, see page v)	I
Appendixes	
A Geographic Terms and Concepts	A-1
B Definitions of Subject Characteristics	B-1
C Data Collection and Processing Procedures	C-1
D Questionnaire	D-1
E Data Products and User Assistance	E-1
F Maps	F-1
G Accuracy of the Data	G-1
H Acknowledgments	H-1

LIST OF
STATISTICAL
TABLES

Table no.	Title	Page
1.	Age and Sex: 2000 State, County, County Subdivision, Place	2
2.	Age and Sex: 2000 State, County, Place	44
3.	Race and Hispanic or Latino: 2000. State, County, County Subdivision, Place	56
4.	Race and Hispanic or Latino: 2000. State, County, Place	98
5.	Population for Selected Categories of Race: 2000. State, County, County Subdivision, Place	110
6.	Population for Selected Categories of Race: 2000. State, County, Place	131
7.	Households and Families: 2000 State, County, County Subdivision, Place	137
8.	Households and Families: 2000 State, County, Place	158
9.	Household Relationship and Group Quarters Population: 2000 State, County, County Subdivision, Place	164
10.	Household Relationship and Group Quarters Population: 2000 State, County, Place	184
11.	Housing Occupancy and Tenure: 2000 State, County, County Subdivision, Place	190
12.	Housing Occupancy and Tenure: 2000 State, County, Place	211
13.	Occupied Housing Units (Households) by Race and Hispanic or Latino Origin of Householder: 2000 State, County, County Subdivision, Place	217
14.	Occupied Housing Units (Households) by Race and Hispanic or Latino Origin of Householder: 2000 State, County, Place	238
15.	Land Area and Population Density: 2000 State, County, County Subdivision, Place	244
16.	Land Area and Population Density: 2000 State, County, Place	254
17.	Age and Sex for the American Indian and Alaska Native Population (One Race): 2000. American Indian Area, County	258
18.	Race and Hispanic or Latino: 2000. American Indian Area, County	260
19.	Population for Selected Categories of Race: 2000. American Indian Area, County	262

20.	Households and Families With American Indian and Alaska Native Householder (One Race): 2000	263
	American Indian Area, County	
21.	Household Relationship and Group Quarters Population for the American Indian and Alaska Native Population (One Race): 2000	264
	American Indian Area, County	
22.	Housing Occupancy and Tenure: 2000	265
	American Indian Area, County	
23.	Occupied Housing Units (Households) by Race and Hispanic or Latino Origin of Householder: 2000	266
	American Indian Area, County	
24.	Land Area and Population Density: 2000	267
	American Indian Area, County	

How to Use This Census Report

CONTENTS

	Page
Introduction	I-1
How to Find Geographic Areas and Subject Matter Data.....	I-2
How to Use the Statistical Tables	I-2
Graphics	I-4
User Notes	I-4
Appendixes	I-5

INTRODUCTION

Data from Census 2000 are presented in three printed report series:

1. PHC-1, *Summary Population and Housing Characteristics*
2. PHC-2, *Summary Social, Economic, and Housing Characteristics*
3. PHC-3, *Population and Housing Unit Counts*

The data from Census 2000 were derived from a limited number of basic questions asked of the entire population and about every housing unit (referred to as the 100-percent questions, found on the “short form”), and from additional questions asked of a sample of the population and housing units (referred to as the sample questions, found on the “long form”). Appendix D presents facsimiles of the questionnaire pages used to collect the data included in this report.

The PHC-1, *Summary Population and Housing Characteristics*, report series provides data based on the 100-percent questions. The subjects are age, Hispanic or Latino origin, household relationship, race, sex, tenure (owner- or renter-occupied), and vacancy characteristics. Land area measurements and population density also are provided. This series is similar to the 1990 census CPH-1 series.

The PHC-2, *Summary Social, Economic, and Housing Characteristics*, report series provides sample data based on both the 100-percent and the sample questions. Sample subjects include place of birth; residence in 1995; language; educational attainment and school enrollment; veteran status; disability status; employment status; journey to work; work status, earnings, income, and poverty status in 1999; physical housing characteristics; units in structure; fuel and equipment characteristics; owner and renter household characteristics, such as year owner moved into unit; home value; contract and gross rent; and mortgage and rental cost characteristics. This series is similar to the 1990 census CPH-5 series.

The PHC-3, *Population and Housing Unit Counts*, report series provides Census 2000 and historical comparisons of the 100-percent population and housing unit counts. It provides land and water area measurements, and population density. The user notes section documents geographic changes over the past decade. This series is similar to the 1990 census CPH-2 series.

In each series, there is one report for each state, the District of Columbia, and Puerto Rico, plus a United States summary report. Many tables in the United States summary reports include data for Puerto Rico. See Appendix E for detailed information about additional Census 2000 data products and release media.

HOW TO FIND GEOGRAPHIC AREAS AND SUBJECT MATTER DATA

This report includes a table finding guide to assist the user in locating those statistical tables that contain the desired data. The table finding guide lists alphabetically, by geographic area, the subjects shown in this report. To determine which tables in this report show data for a particular topic, find the subject in the lefthand column of the table finding guide and then look across the columns using the headings at the top for the desired type of geographic area. Figure I-1 is an example of a table finding guide.

The table finding guide does not include cross-classifications of subject-matter items. Additional information to locate data within specific reports is provided in the headnote at the top of the table finding guide and in the footnotes at the bottom of the guide.

HOW TO USE THE STATISTICAL TABLES

Parts of a Statistical Table

The census data included in printed reports are arranged in tables. Each table includes four major parts: (1) heading, (2) boxhead, (3) stub, and (4) data field. A typical census report table is illustrated in Figure I-2.

The heading consists of the table number, title, and headnote. The table number indicates the position of the table within the report, while the title is a brief statement indicating the subjects and time reference of the data presented in the table. The headnote is enclosed in brackets and is located under the title. It contains statements that qualify, explain, or provide information pertaining to the entire table.

The boxhead is under the heading. This portion of the table, which contains the individual column heads or captions, describes the data in each vertical column. In the boxhead of many tables, a spanner appears across and above two or more column heads or across two or more lower spanners. The purpose of a spanner is to classify or qualify items below it or separate the table into identifiable blocks in terms of major aspects of the data.

Figure I-1.

Table Finding Guide

SUBJECTS BY TYPE OF GEOGRAPHIC AREA AND TABLE NUMBER

Subjects covered in this report are shown on the left side, and types of geographic areas are shown at the top. Table numbers shown in bold indicate that either all or part of the table is presented for the American Indian and Alaska Native population in American Indian and Alaska Native areas, or for the Native Hawaiian and Other Pacific Islander population in Hawaiian home lands. For a description of area classifications, see Appendix A. For definitions and explanations of subject characteristics, see Appendix B.

Subject	The state ¹	County ²	Place		County subdivision		American Indian and Alaska Native Area ⁴	Hawaiian home land ⁵
			By county and county subdivision	Alphabetically for the state	By county	Alphabetically for the state ³		
POPULATION CHARACTERISTICS								
Age	1, 2	1, 2	1	2	1	2	17	25
Average family size	7, 8	7, 8	7	8	7	8	20	28
Average household size	7, 8	7, 8	7	8	7	8	20	28
Families and family characteristics	7, 8	7, 8	7	8	7	8	20	28
Group quarters population	9, 10	9, 10	9	10	9	10	21	29
Hispanic or Latino	3, 4	3, 4	3	4	3	4	18	26
Households and household characteristics	7, 8, 9, 10	7, 8, 9, 10	7, 9	8, 10	7, 9	8, 10	20, 21	28, 29
Nonfamily households	7, 8	7, 8	7	8	7	8	20	28
Population density	15, 16	15, 16	15	16	15	16	24	32
Race	3, 4, 5, 6	3, 4, 5, 6	3, 5	4, 6	3, 5	4, 6	18, 19	26, 27
Relationship to householder	9, 10	9, 10	9	10	9	10	21	29
Sex	1, 2	1, 2	1	2	1	2	17	25
HOUSING CHARACTERISTICS								
Hispanic or Latino origin of householder	13, 14	13, 14	13	14	13	14	23	31
Average household size	11, 12	11, 12	11	12	11	12	22	30
Occupancy characteristics	11, 12	11, 12	11	12	11	12	22	30
Race of householder	13, 14	13, 14	13	14	13	14	23	31
Tenure	11, 12	11, 12	11	12	11	12	22	30
Vacancy characteristics	11, 12	11, 12	11	12	11	12	22	30
GEOGRAPHIC CHARACTERISTICS								
Land area	15, 16	15, 16	15	16	15	16	24	32
Population density	15, 16	15, 16	15	16	15	16	24	32

¹State, District of Columbia, or Puerto Rico.

²Parish in Louisiana; borough, census area, city and borough, and municipio in Alaska; and municipio in Puerto Rico; in Maryland, Missouri, Nevada, and Virginia, one or more cities are independent of counties and are treated as statistical equivalents of counties; the entire District of Columbia, which has no counties, is treated as a county equivalent.

³County subdivisions within the state are shown alphabetically with places for the following 12 states: Connecticut, Maine, Massachusetts, Michigan, Minnesota, New Hampshire, New Jersey, New York, Pennsylvania, Rhode Island, Vermont, and Wisconsin.

⁴American Indian and Alaska Native areas include state and federal American Indian reservations; Oklahoma tribal statistical areas (OTSAs); tribal designated statistical areas (TDSAs) (federal areas); state designated American Indian statistical areas (SDAISAs) (state areas); Alaska Native village statistical areas (ANVSAs) (Alaska); and Alaska Native Regional Corporations (ANRCs) (Alaska).

⁵Tables for these areas appear only in the report for Hawaii.

Figure I-2.

PARTS OF A STATISTICAL TABLE

Table number and title: Table 6. Population for Selected Categories of Race: 2000

Headnote: For information on confidentiality protection, nonsampling error, and definitions, see text.

Spanner: Selected combinations of two races

Column head: Race alone or in combination with one or more other races

Boxhead: State, County, Place and (if Selected) Census Tract

Stubhead: The State

Sidehead: PLACE

Table content: Population data for Alabama counties and places, categorized by race (White, Black or African American, American Indian and Alaska Native, Asian, Hawaiian and Other Pacific Islander, Some other race).

Page number and state name: 16 Alabama

Report title: Summary Population and Housing Characteristics U.S. Census Bureau, Census 2000

The stub is located at the left edge of the table. It includes a listing of line or row captions or descriptions. At the top of the stub is the stubhead. The stubhead is considered to be an extension of the table title and usually shows generic geographic area designations and restrictions.

In the stub, several features are used to help the user better understand the contents of the table. Usually, a block of data lines is preceded by a sidehead, similar to a spanner, describes and classifies the stub entries following it. The use of indentation in a stub indicates the relationship of one data line to another. Indented data lines represent subcategories that, in most instances, sum to a total.

in tables, it is desirable to show one or more single-line subcategories that do not sum to the total.

The data field is that part of the statistical table that contains the data. It extends from the bottom of the boxhead to the bottom of the table and from the right of the stub to the right edge of the page.

Both geographic and subject-matter terms appear in tables. It is important to read the definitions of the terms used in the tables because census terms often are defined in special ways that reflect the manner in which the questions were asked and the data were tabulated. Definitions of geographic terms are provided in Appendix A. Census tables often include derived measures such as medians, means, percentages, and ratios. These and other subject-matter terms are defined in Appendix B.

Symbols and Geographic Abbreviations

The following symbols are used in the tables and explanations of subjects covered in Census 2000 reports:

- A dash “-” represents zero or a derived measure that rounds to less than 0.1.
- (X) means not applicable. In the 1990 and earlier decennial census reports, three dots “...” meant not applicable.
- (NA) means not available.

How to Use This Census Report

-
- The superscript prefix “r” indicates that the count has been revised since the publication of the 1990 census reports, or that the area was erroneously omitted or not shown in the correct geographic relationship in the 1990 census reports. This symbol appears only in the Census 2000 PHC-3, *Population and Housing Unit Counts*, report series.
 - A dagger “†” next to the name of a geographic area indicates that there has been a geographic change (for example, an annexation or detachment, a new incorporation, or a name change) since the information was published for the 1990 census for that area. This symbol appears only in the Census 2000 PHC-3, *Population and Housing Unit Counts*, report series. The geographic change information for the entities in a state is shown in the “User Notes” section of the Census 2000 PHC-3 report for that state.
 - A plus sign “+” is appended to the lower bound of the highest interval when the median falls in the upper interval of an open-ended distribution. A minus sign “-” is appended to the upper bound of the lowest interval when the median falls in the lowest interval of an open-ended distribution. For more information on medians, see the section on “Derived Measures” in Appendix B.
 - A minus sign “-” preceding a figure denotes decrease. The minus sign appears only in the Census 2000 PHC-3, *Population and Housing Unit Counts*, report series.

The following geographic abbreviations and terms may be used in the tables in this report:

- A “(part)” next to the name of a geographic area in a hierarchical presentation indicates that the geographic entity is located only partially in the superior geographic entity. For example, a “(part)” next to a place name in a county subdivision-place hierarchy indicates that the place is located in more than one county subdivision. (Places also may be “split” by county, congressional district, urban/rural, metropolitan area, voting district, and other geographic boundaries, depending on the presentation.) Other geographic entities also can be “split” by a higher level entity. The exception is a tabulation block, which is unique within all geographic entities in census products.
- ANVSA is Alaska Native village statistical area.
- ANRC is Alaska Native Regional Corporation.
- CCD is census county division.
- CDP is census designated place.
- CMSA is consolidated metropolitan statistical area.
- MA is metropolitan area.
- MSA is metropolitan statistical area.
- OTSA is Oklahoma tribal statistical area.
- PMSA is primary metropolitan statistical area.
- SDAISA is state designated American Indian statistical area.
- TDSA is tribal designated statistical area.
- UT is unorganized territory.

GRAPHICS

Charts, statistical maps, and other graphic summaries are included in some Census 2000 reports.

USER NOTES

User notes include corrections, errata, and related explanatory information. This section appears directly before the statistical tables in census reports. It presents information about unique characteristics of the report and changes or corrections made too late to be reflected in the text or tables themselves. However, sometimes this information becomes available too late to be

reflected even in the user notes. Census 2000 user updates are available on the Census Bureau's Internet site at www.census.gov/main/www/cen2000.html. To receive notification of user notes, subscribe to the Census Product Update (<http://www.census.gov/mp/www/cpu.html>), a biweekly e-mail newsletter available from the Customer Services Center of the Marketing Services Office at the U.S. Census Bureau, or contact the Customer Services Center directly on 301-763-INFO (4636) or at webmaster@census.gov.

APPENDIXES

Appendix A, Geographic Terms and Concepts. Provides definitions of the types of geographic areas and related information used in census products.

Appendix B, Definitions of Subject Characteristics. Contains definitions for the subject-matter terms used in census products, including explanations of derived measures, limitations of the data, and comparability with previous censuses. The subjects are listed alphabetically. Population characteristics are defined first, followed by the definitions of the housing subjects.

Appendix C, Collection and Processing Procedures. Explains the enumeration and residence rules used in counting the population and housing units in the United States and Puerto Rico. It also describes the major components of the operational plan for Census 2000, and includes a glossary of terms.

Appendix D, Questionnaire Facsimile. Presents a facsimile of the Census 2000 questionnaire used to collect the data in this report.

Appendix E, Data Products and User Assistance. Summarizes the Census 2000 data products by describing the information available in printed reports and through electronic media such as CD-ROM, DVD, and the Internet. It also describes Census 2000 maps and other geographic products, reference materials, and sources of assistance.

Appendix F, Maps. Contains maps depicting the geographic areas shown in this report.

Appendix G, Accuracy of the Data. Provides information on confidentiality of the data, imputation of housing unit status and population counts, sources of errors in the data, and editing of unacceptable data.

Appendix H, Acknowledgments. Lists many of the U.S. Census Bureau staff who participated in the various activities of Census 2000.

Table Finding Guide

SUBJECTS BY TYPE OF GEOGRAPHIC AREA AND TABLE NUMBER

Subjects covered in this guide are shown on the left side, and types of geographic areas are shown at the top. Table numbers shown in bold indicate that either all or part of the table is presented for the American Indian and Alaska Native population in American Indian and Alaska Native areas, or for the Native Hawaiian and Other Pacific Islander population in Hawaiian home lands. For a description of area classifications, see Appendix A. For definitions and explanations of subject characteristics, see Appendix B.

Subject	The state ¹	County ²	Place		County subdivision		American Indian and Alaska Native area ⁴	Hawaiian home land ⁵
			By county and county subdivision	Alphabetically for the state	By county	Alphabetically for the state ³		
POPULATION CHARACTERISTICS								
Age	1, 2	1, 2	1	2	1	2	17	25
Average family size	7, 8	7, 8	7	8	7	8	20	28
Average household size	7, 8	7, 8	7	8	7	8	20	28
Families and family characteristics ...	7, 8	7, 8	7	8	7	8	20	28
Group quarters population	9, 10	9, 10	9	10	9	10	21	29
Hispanic or Latino	3, 4	3, 4	3	4	3	4	18	26
Households and household characteristics	7, 8, 9, 10	7, 8, 9, 10	7, 9	8, 10	7, 9	8, 10	20, 21	28, 29
Nonfamily households	7, 8	7, 8	7	8	7	8	20	28
Population density	15, 16	15, 16	15	16	15	16	24	32
Race	3, 4, 5, 6	3, 4, 5, 6	3, 5	4, 6	3, 5	4, 6	18, 19	26, 27
Relationship to householder	9, 10	9, 10	9	10	9	10	21	29
Sex	1, 2	1, 2	1	2	1	2	17	25
HOUSING CHARACTERISTICS								
Average household size by tenure ...	11, 12	11, 12	11	12	11	12	22	30
Hispanic or Latino origin of householder	13, 14	13, 14	13	14	13	14	23	31
Occupancy characteristics	11, 12	11, 12	11	12	11	12	22	30
Race of householder	13, 14	13, 14	13	14	13	14	23	31
Tenure	11, 12	11, 12	11	12	11	12	22	30
Vacancy characteristics	11, 12	11, 12	11	12	11	12	22	30
GEOGRAPHIC CHARACTERISTICS								
Land area	15, 16	15, 16	15	16	15	16	24	32
Population density	15, 16	15, 16	15	16	15	16	24	32

¹State, District of Columbia, or Puerto Rico.

²Parish in Louisiana; city and borough, municipality, borough, or census area in Alaska; and municipio in Puerto Rico; in Maryland, Missouri, Nevada, and Virginia, one or more cities are independent of counties and are treated as statistical equivalents of counties; the entire District of Columbia, which has no counties, is treated as a county equivalent.

³County subdivisions within the state are shown alphabetically with places for the following 12 states: Connecticut, Maine, Massachusetts, Michigan, Minnesota, New Hampshire, New Jersey, New York, Pennsylvania, Rhode Island, Vermont, and Wisconsin.

⁴American Indian and Alaska Native areas include state and federal American Indian reservations; Oklahoma tribal statistical areas (OTSAs); tribal designated statistical areas (TDSAs) (federal areas); state designated American Indian statistical areas (SDAISAs) (state areas); Alaska Native village statistical areas (ANVSAs); and Alaska Native Regional Corporations (ANRCs).

⁵Tables for these areas appear only in the report for Hawaii.

User Notes

Additional information concerning this Census 2000 product and its source file, Summary File 1, may become available after this report is published. This information, called Notes and Errata, is available in portable document format (PDF) on the U.S. Census Bureau's Internet site at <http://www.census.gov/main/www/cen2000.html>. To receive notification of user notes, subscribe to the Census Product Update (<http://www.census.gov/mp/www/cpu.html>), a biweekly e-mail newsletter available from the Customer Services Center of the Marketing Services Office at the U.S. Census Bureau, or contact the Customer Services Center directly on 301-763-INFO (4636) or at webmaster@census.gov.

ADDITIONAL DEFINITIONS AND EXPLANATIONS OF THE DATA

User Note 1

The user should note that there are limitations to many of these data. Please refer to the text provided with this report for further explanations on the limitations of the data.

STATISTICAL TABLES

Table 1. **Age and Sex: 2000**

[For information on confidentiality protection, nonsampling error, and definitions, see text]

State County County Subdivision Place	Total population	Median age	Age								
			Under 5 years	5 to 17 years	18 to 20 years	21 to 24 years	25 to 34 years	35 to 44 years	45 to 54 years	55 to 59 years	60 to 64 years
The State	642 200	36.2	39 400	121 449	34 248	38 870	76 887	98 004	85 431	28 926	24 507
Adams County	2 593	45.6	117	484	58	49	198	364	407	137	155
Beisigl township	25	45.5	2	2	-	2	3	3	3	4	1
Bucyrus city	26	49.0	-	1	1	3	1	4	6	2	4
Bucyrus township	40	40.0	2	13	-	-	-	12	3	5	1
Cedar township	21	34.5	1	9	-	-	1	7	1	-	-
Central Adams UT	64	36.5	5	19	-	2	4	12	7	2	7
Chandler township	9	44.5	-	2	-	-	-	3	1	1	-
Clermont township	25	53.5	-	2	-	-	1	1	9	3	2
Darling Springs township	32	44.0	3	7	-	1	-	5	3	4	-
Duck Creek township	33	27.5	4	10	1	-	2	7	4	2	2
East Adams UT	192	47.4	11	29	4	5	13	23	42	12	16
Gilstrap township	28	36.0	1	7	2	-	4	5	5	1	-
Haynes city	19	59.5	1	1	-	-	1	2	2	3	4
Hettinger city	1 307	46.2	60	223	36	27	116	170	194	47	62
Hettinger township	198	43.7	4	52	4	-	10	36	36	12	11
Holden UT	32	37.5	2	7	2	-	4	3	6	3	1
Lemmon UT	29	51.3	-	8	-	1	1	4	5	1	1
Lightning Creek township	24	25.0	3	7	-	2	5	2	1	1	-
Maine township	18	58.0	-	3	-	-	1	1	2	5	2
Orange township	26	45.5	1	6	-	-	2	4	5	2	3
Reeder city	181	60.3	5	15	3	4	14	12	28	9	21
Reeder township	38	43.0	1	5	1	1	2	11	7	2	2
Scott township	124	40.3	6	37	3	-	5	22	21	7	8
South Fork township	23	44.3	2	3	-	-	4	4	2	2	2
Taylor Butte township	19	56.5	1	1	-	-	2	-	5	1	-
Whelstone township	21	43.5	2	4	-	-	1	4	3	2	3
Wolf Butte township	39	42.3	-	11	1	1	1	7	6	4	2
Barnes County	11 775	40.6	623	2 001	707	618	1 092	1 619	1 631	612	540
Alta township	98	41.0	7	19	3	2	9	17	17	7	9
Anderson township	56	42.5	7	9	1	-	7	6	9	3	4
Ashtabula township	93	43.5	3	22	4	1	4	16	13	9	3
Baldwin township	34	44.3	2	8	-	-	2	8	3	1	3
Binghampton township	100	40.3	6	25	5	4	3	18	15	2	1
Brimer township	66	38.7	3	13	8	-	4	13	11	7	1
Cuba township	89	35.3	3	25	1	5	10	10	18	9	4
Dazey city	91	41.5	4	19	2	-	10	16	11	5	3
Dazey township	59	28.8	5	15	4	2	6	7	7	1	2
Eckelson township	95	38.5	6	14	1	6	14	19	14	6	3
Edna township	74	46.0	2	11	6	2	4	11	15	3	7
Ellsbury township	28	40.0	-	8	1	-	1	8	2	4	1
Fingal city	133	34.3	13	27	3	4	21	14	15	4	2
Getchell township	68	44.5	1	15	3	2	3	12	12	4	4
Grand Prairie township	49	40.5	3	12	-	2	2	10	6	6	1
Green township	97	38.5	7	19	3	4	11	18	11	7	3
Greenland township	52	42.0	3	9	2	2	6	5	10	-	3
Hemen township	39	39.0	-	9	3	1	3	8	4	3	1
Hobart township	149	45.4	4	29	5	3	13	19	36	13	6
Kathryn city	63	47.8	4	5	2	-	9	9	5	3	6
Lake Town township	40	41.0	-	10	-	1	4	6	6	5	1
Leal city	36	33.5	5	9	-	2	2	8	4	2	1
Litchville city	191	41.2	9	36	6	4	18	34	13	9	9
Mansfield township	41	32.5	5	8	1	-	7	6	9	2	1
Marsh township	229	42.8	16	37	10	6	16	39	47	17	11
Meadow Lake township	93	39.2	6	24	3	-	4	24	15	2	1
Minnie Lake township	63	41.5	2	15	3	2	5	11	7	7	2
Nelson township	61	48.5	5	8	2	1	3	4	19	8	3
Noltmier township	89	39.4	8	17	1	2	12	13	20	8	1
Nome city	70	43.0	6	12	2	1	7	10	4	3	3
Norma township	54	46.0	3	8	3	1	2	8	14	3	1
Oakhill township	79	35.3	6	20	5	-	8	9	15	1	5
Oriska city	128	32.5	7	34	8	5	12	27	16	3	8
Oriska township	72	46.0	2	19	1	-	3	9	19	8	4
Pierce township	91	35.1	8	26	1	-	10	20	4	4	4
Pillsbury city	24	43.0	1	4	1	1	2	4	5	4	-
Potter township	41	44.8	3	5	1	-	4	8	12	5	-
Raritan township	108	48.7	6	17	5	5	7	7	23	8	9
Rogers city	61	43.8	2	12	4	1	4	8	9	2	5
Rogers township	42	39.5	3	5	2	2	7	7	4	1	1
Rosebud township	68	42.3	4	16	1	-	4	11	11	5	5
Sanborn city	194	36.8	16	39	5	6	26	28	29	8	15
Sibley city	46	55.0	5	4	2	2	3	1	6	4	4
Sibley Trail township	85	44.4	4	12	2	3	12	12	13	8	7
Skandia township	54	46.5	4	5	2	1	4	10	6	7	4
Spring Creek township	85	45.2	2	18	2	-	6	14	17	3	4
Springvale township	60	41.5	1	15	1	3	1	14	11	5	-
Stewart township	124	28.0	13	33	2	7	20	14	14	8	2
Svea township	43	43.9	-	12	-	-	1	10	3	7	4
Thordenskjold township	79	43.8	3	19	2	1	1	17	21	1	2
Tower City city (part)	-	-	-	-	-	-	-	-	-	-	-
Uxbridge township	111	35.5	9	33	5	-	8	20	12	6	3
Valley township	565	38.9	38	139	23	6	45	107	99	32	27
Valley City city	6 826	40.6	326	957	536	507	653	807	841	310	313
Weimer township	53	35.5	3	14	3	1	5	8	8	1	3
Wimbleton city	237	42.5	9	46	5	7	24	40	41	8	10
Benson County	6 964	31.4	619	1 894	270	271	726	895	773	318	257
Albert township	61	35.3	6	15	2	1	6	12	7	2	1
Arne township	51	48.8	5	6	-	2	4	6	8	2	3
Aurora township	28	55.0	1	5	-	1	-	4	3	3	4
Beaver township	39	31.5	2	15	1	-	2	9	3	1	2
Brinsmade city	29	39.5	2	3	-	1	6	5	3	2	1
Broe township	43	45.5	-	8	-	1	6	6	6	4	2
Butte Valley township	87	37.5	7	19	3	5	8	10	10	6	2

Table 1. **Age and Sex: 2000**—Con.

[For information on confidentiality protection, nonsampling error, and definitions, see text]

Age—Con.			Age and sex						Percent of total population		State County County Subdivision Place
65 to 74 years	75 to 84 years	85 years and over	All ages		18 years and over		65 years and over		Under 18 years	65 years and over	
			Female	Males per 100 females	Total	Female	Total	Female			
45 901	33 851	14 726	321 676	99.6	481 351	243 398	94 478	54 597	25.0	14.7	The State
279	232	113	1 354	91.5	1 992	1 045	624	363	23.2	24.1	Adams County
2	2	1	14	78.6	21	11	5	3	16.0	20.0	Beisigl township
2	1	1	12	116.7	25	12	4	2	3.8	15.4	Bucyrus city
-	4	-	18	122.2	25	13	4	3	37.5	10.0	Bucyrus township
2	-	-	9	133.3	11	4	2	1	47.6	9.5	Cedar township
3	3	-	31	106.5	40	17	6	3	37.5	9.4	Central Adams UT
2	-	-	3	200.0	7	3	2	1	22.2	22.2	Chandler township
5	2	-	13	92.3	23	11	7	4	8.0	28.0	Clermont township
7	2	-	16	100.0	22	10	9	4	31.3	28.1	Darling Springs township
1	-	-	17	94.1	19	9	1	1	42.4	3.0	Duck Creek township
22	13	2	89	115.7	152	71	37	16	20.8	19.3	East Adams UT
-	2	1	14	100.0	20	9	3	2	28.6	10.7	Gilstrap township
4	-	1	10	90.0	17	9	5	3	10.5	26.3	Haynes city
126	156	90	726	80.0	1 024	575	372	236	21.7	28.5	Hettinger city
24	7	2	97	104.1	142	73	33	16	28.3	16.7	Hettinger township
4	-	-	17	88.2	23	12	4	2	28.1	12.5	Holden UT
5	3	-	14	107.1	21	10	8	4	27.6	27.6	Lemmon UT
3	-	-	11	118.2	14	7	3	1	41.7	12.5	Lightning Creek township
2	1	1	9	100.0	15	7	4	2	16.7	22.2	Maine township
2	1	-	14	85.7	19	9	3	-	26.9	11.5	Orange township
36	26	8	89	103.4	161	82	70	38	11.0	38.7	Reeder city
6	-	-	13	192.3	32	12	6	2	15.8	15.8	Reeder township
10	2	3	62	100.0	81	38	15	8	34.7	12.1	Scott township
2	2	-	12	91.7	18	10	4	2	21.7	17.4	South Fork township
6	2	1	10	90.0	17	9	9	5	10.5	47.4	Taylor Butte township
2	-	-	10	110.0	15	7	2	1	28.6	9.5	Whetstone township
1	3	2	24	62.5	28	15	6	3	28.2	15.4	Wolf Butte township
1 005	912	415	5 984	96.8	9 151	4 684	2 332	1 344	22.3	19.8	Barnes County
5	2	1	47	108.5	72	36	8	6	26.5	8.2	Alta township
6	4	-	25	124.0	40	19	10	4	28.6	17.9	Anderson township
8	10	-	41	126.8	68	31	18	9	26.9	19.4	Ashtabula township
6	1	-	18	88.9	24	11	7	1	29.4	20.6	Baldwin township
8	13	-	44	127.3	69	33	21	12	31.0	21.0	Binghamton township
5	1	-	29	127.6	50	22	6	1	24.2	9.1	Brimer township
4	-	-	42	111.9	61	27	4	1	31.5	4.5	Cuba township
15	6	-	46	97.8	68	33	21	12	25.3	23.1	Dazey city
9	-	1	28	110.7	39	17	10	4	33.9	16.9	Dazey township
3	9	-	51	86.3	75	36	12	7	21.1	12.6	Eckelson township
7	5	1	36	105.6	61	28	13	5	17.6	17.6	Edna township
3	-	-	16	75.0	20	9	3	1	28.6	10.7	Ellsbury township
17	8	5	68	95.6	93	48	30	18	30.1	22.6	Fingal city
5	7	-	30	126.7	52	25	12	7	23.5	17.6	Getchell township
3	4	-	24	104.2	34	15	7	2	30.6	14.3	Grand Prairie township
5	9	-	42	131.0	71	30	14	7	26.8	14.4	Green township
8	4	-	27	92.6	40	20	12	6	23.1	23.1	Greenland township
3	3	-	20	90.0	29	14	6	3	23.7	15.8	Hemen township
14	4	3	73	104.1	116	55	21	10	22.1	14.1	Hobart township
9	9	2	29	117.2	54	25	20	12	14.3	31.7	Kathryn city
2	4	1	20	100.0	30	17	7	5	25.0	17.5	Lake Town township
3	-	-	22	63.6	22	12	3	2	38.9	8.3	Leal city
28	20	5	100	91.0	146	72	53	28	23.6	27.7	Litchville city
-	2	-	18	127.8	28	11	2	1	31.7	4.9	Mansfield township
16	12	2	111	106.3	176	84	30	15	23.1	13.1	Marsh township
9	5	-	40	132.5	63	30	14	7	32.3	15.1	Meadow Lake township
2	6	1	30	110.0	46	20	9	5	27.0	14.3	Minnie Lake township
1	5	2	26	134.6	48	20	8	3	21.3	13.1	Nelson township
2	4	1	38	134.2	64	31	7	3	28.1	7.9	Noltmier township
9	11	2	35	100.0	52	25	22	12	25.7	31.4	Nome city
5	5	1	24	125.0	43	18	11	4	20.4	20.4	Norma township
5	5	-	38	107.9	53	27	10	4	32.9	12.7	Oakhill township
4	2	2	56	128.6	87	42	8	6	32.0	6.3	Oriska city
5	1	1	32	125.0	51	25	7	2	29.2	9.7	Oriska township
8	5	1	41	122.0	57	28	14	6	37.4	15.4	Pierce township
2	-	-	9	166.7	19	7	2	-	20.8	8.3	Pillsbury city
2	1	-	18	127.8	33	16	3	1	19.5	7.3	Potter township
9	10	2	57	89.5	85	42	21	9	21.3	19.4	Raritan township
7	5	2	23	165.2	47	18	14	6	23.0	23.0	Rogers city
7	1	2	21	100.0	34	15	10	5	19.0	23.8	Rogers township
5	4	2	31	119.4	48	23	11	4	29.4	16.2	Rosebud township
11	11	-	105	84.8	139	75	22	11	28.4	11.3	Sanborn city
10	3	2	23	100.0	37	18	15	6	19.6	32.6	Sibley city
7	4	1	37	129.7	69	30	12	4	18.8	14.1	Sibley Trail township
9	2	-	26	107.7	45	20	11	4	16.7	20.4	Skandia township
10	7	2	43	97.7	65	33	19	10	23.5	22.4	Spring Creek township
3	4	2	32	87.5	44	22	9	4	26.7	15.0	Springvale township
7	3	1	52	138.5	78	33	11	5	37.1	8.9	Stewart township
4	2	-	20	115.0	31	14	6	1	27.9	14.0	Svea township
3	7	2	36	119.4	57	25	12	5	27.8	15.2	Thordenskjold township
-	-	-	-	(X)	-	-	-	-	(X)	(X)	Tower City city (part)
8	5	2	59	88.1	69	34	15	7	37.8	13.5	Uxbridge township
33	15	1	279	102.5	388	194	49	27	31.3	8.7	Valley township
601	617	358	3 604	89.4	5 543	2 957	1 576	973	18.8	23.1	Valley City city
6	1	-	21	152.4	36	16	7	3	32.1	13.2	Weimer township
19	24	4	121	95.9	182	96	47	28	23.2	19.8	Wimbledon city
486	306	149	3 446	102.1	4 451	2 204	941	508	36.1	13.5	Benson County
3	6	-	28	117.9	40	17	9	4	34.4	14.8	Albert township
9	4	2	23	121.7	40	21	15	9	21.6	29.4	Arne township
5	2	-	12	133.3	22	10	7	2	21.4	25.0	Aurora township
2	2	-	21	85.7	22	10	4	-	43.6	10.3	Beaver township
5	1	-	15	93.3	24	11	6	3	17.2	20.7	Brinsmade city
5	4	1	18	138.9	35	16	10	5	18.6	23.3	Broe township
6	7	4	30	190.0	61	22	17	6	29.9	19.5	Butte Valley township

Table 1. **Age and Sex: 2000**—Con.

[For information on confidentiality protection, nonsampling error, and definitions, see text]

State County County Subdivision Place	Total population	Median age	Age								
			Under 5 years	5 to 17 years	18 to 20 years	21 to 24 years	25 to 34 years	35 to 44 years	45 to 54 years	55 to 59 years	60 to 64 years
Benson County—Con.											
East Fork township	36	40.0	1	11	3	-	1	6	8	-	2
Eldon township	53	46.9	5	8	-	1	5	3	16	4	-
Esmond city	159	54.5	10	20	-	3	14	21	12	5	12
Esmond township	50	54.7	2	6	2	1	7	2	6	6	6
Fort Totten UT	1 614	18.7	209	574	96	103	195	188	115	57	30
Fort Totten CDP	952	18.3	134	336	50	62	123	104	59	36	20
Hesper township	83	42.8	4	23	-	1	5	10	13	6	3
Impark township	40	46.0	3	3	3	-	6	4	4	3	4
Iowa township	33	40.5	1	10	1	-	1	9	7	-	-
Irvine township	24	51.5	-	5	-	1	1	4	1	2	2
Isabel township	70	48.0	2	11	1	1	10	8	9	4	7
Knox city	59	34.8	5	17	-	4	4	5	7	4	6
Knox township	36	49.5	-	6	2	5	2	2	6	5	1
Lake Ibsen township	39	30.5	2	12	2	-	5	2	9	1	-
Lallie township	364	20.0	44	122	25	20	43	43	23	15	11
Lallie North UT	20	35.0	3	3	-	1	3	5	2	1	1
Leeds city	464	43.7	21	97	11	6	32	73	58	29	25
Leeds township	83	33.3	9	20	4	1	10	16	10	3	1
Lohnes township	14	50.5	-	3	1	-	1	1	3	2	-
McClellan township	34	52.0	-	6	-	-	2	4	10	5	1
Maddock city	498	53.2	10	74	9	6	35	67	54	22	18
Minco township	22	38.0	2	5	-	1	1	5	-	1	3
Minnewaukan city	42.0	42.0	14	57	5	8	33	51	54	19	19
Mission township	1 077	20.4	138	359	53	59	132	125	113	32	27
Normania township	56	48.3	4	11	1	-	4	3	12	1	5
North Viking township	70	41.5	1	22	1	-	3	15	10	4	1
Oberon city	81	45.8	6	12	3	2	10	6	13	2	9
Oberon township	91	40.5	5	22	3	3	6	12	15	5	6
Pleasant Lake township	80	31.0	10	22	4	1	11	15	3	2	2
Rich Valley township	46	41.0	3	7	2	1	7	7	3	7	2
Riggin township	63	41.8	3	15	2	-	4	9	8	6	2
Rock township	39	49.5	1	9	-	1	2	4	8	-	3
South Viking township	69	43.8	2	19	1	2	4	9	18	2	4
Twin Lake township	43	41.2	4	6	2	-	5	7	10	-	-
Twin Tree township	50	37.0	4	14	1	2	1	9	3	5	2
Warwick city	75	40.8	5	15	1	1	11	6	10	9	5
Warwick township	78	21.5	5	29	5	2	4	13	10	1	1
West Antelope township	33	45.8	-	5	1	-	1	8	7	3	1
West Bay township	60	48.5	2	12	-	-	5	6	14	6	5
Wood Lake township	440	22.4	52	142	19	22	63	55	40	13	8
York city	26	48.5	2	5	-	-	2	3	2	2	3
York township	36	55.0	2	4	-	1	3	2	6	4	4
Billings County											
Medora city	888	41.9	31	190	20	20	67	169	157	50	42
North Billings UT	500	41.0	5	21	1	3	12	17	20	5	1
South Billings UT	145	41.5	17	126	12	13	39	96	91	34	28
South Billings UT	243	43.1	9	43	7	4	16	56	46	11	13
Bottineau County											
Amity township	7 149	43.4	280	1 307	387	186	566	1 031	1 105	418	347
Antler city	35	47.8	-	5	1	2	-	6	11	4	5
Antler township	47	44.8	2	8	1	-	3	10	3	3	5
Bentinck township	78	44.5	6	7	3	2	12	10	19	5	6
Blaine township	32	48.0	3	4	1	-	1	5	10	2	1
Bottineau city	30	35.5	1	11	1	-	2	4	6	-	1
Brander township	2 336	43.4	82	361	247	84	167	274	311	91	84
Cecil township	60	34.5	3	18	3	1	5	10	10	4	-
Chatfield township	28	45.0	1	6	-	2	-	5	9	1	2
Cordelia township	45	42.5	-	7	3	3	1	9	8	2	2
Cut Bank township	119	41.5	5	23	5	1	17	14	26	4	4
Dalen township	56	51.0	2	10	-	-	3	5	12	6	11
Eidsvold township	111	41.5	8	20	7	-	12	16	14	10	9
Elms township	38	58.0	-	4	-	-	4	8	1	4	9
Elysian township	54	37.5	2	13	3	-	7	10	6	6	-
Gardena city	37	52.3	2	4	-	-	3	4	11	5	2
Haram township	38	21.7	4	10	3	4	-	5	7	2	1
Hastings township	85	47.3	3	13	3	2	8	11	20	3	3
Hoffman township	55	50.5	5	8	2	-	4	3	13	5	5
Homen township	19	30.3	1	8	-	-	3	4	1	1	-
Kane township	122	42.0	6	24	4	2	11	19	22	8	15
Kramer city	71	38.5	7	11	-	-	15	8	10	5	1
Landa city	44	58.5	1	2	2	-	7	3	4	3	5
Lansford city	28	45.0	1	1	1	4	1	6	8	3	2
Lansford township	253	36.7	12	53	7	10	38	51	34	15	2
Lewis township	63	46.2	1	13	-	-	3	14	15	5	-
Lordsburg township	39	51.5	1	7	1	1	2	4	8	3	1
Maxbass city	22	29.5	3	6	1	1	-	5	3	1	-
Mount Rose township	91	44.2	4	15	4	1	10	14	15	4	5
Newborg township	64	41.3	2	17	2	4	1	13	8	6	1
Newburg city	30	45.0	3	6	1	-	4	1	2	6	1
Oak Creek township	88	47.5	4	10	1	3	9	11	17	4	2
Oak Valley township	26	57.0	-	4	-	1	1	4	2	3	3
Ostby township	62	41.7	2	15	-	1	2	15	8	5	2
Overly city	65	43.2	3	12	-	-	10	11	7	2	3
Peabody township	19	39.5	-	4	-	1	4	1	3	-	1
Pickering township	16	47.0	-	2	-	-	-	1	5	2	2
Renville township	213	38.9	8	53	10	3	17	42	28	14	11
Richburg township	32	47.5	2	3	-	1	2	4	8	-	2
Roland township	49	43.5	1	9	2	-	2	12	6	1	8
Scandia township	545	48.4	18	85	13	9	43	77	102	57	48
Scotia township	54	56.5	2	6	1	2	1	5	9	8	3
Sergius township	64	42.0	5	10	2	-	7	10	7	-	1
Sherman township	79	43.1	4	20	2	2	3	16	13	2	3
Souris city	69	39.8	5	18	1	-	4	11	7	1	6
Starbuck township	83	35.3	8	21	2	1	9	9	7	7	4
Starbuck township	38	42.5	1	7	1	-	2	10	2	4	3

Table 1. **Age and Sex: 2000**—Con.

[For information on confidentiality protection, nonsampling error, and definitions, see text]

Age—Con.			Age and sex						Percent of total population		State County County Subdivision Place
65 to 74 years	75 to 84 years	85 years and over	All ages		18 years and over		65 years and over		Under 18 years	65 years and over	
			Female	Males per 100 females	Total	Female	Total	Female			
2	2	-	18	100.0	24	10	4	2	33.3	11.1	Benson County—Con.
5	5	1	22	140.9	40	16	11	4	24.5	20.8	East Fork township
40	13	9	81	96.3	129	66	62	32	18.9	39.0	Eldon township
7	4	1	24	108.3	42	18	12	7	16.0	24.0	Esmond city
32	13	2	800	101.8	831	425	47	24	48.5	2.9	Esmond township
20	6	2	468	103.4	482	254	28	16	49.4	2.9	Fort Totten UT
10	6	2	38	118.4	56	27	18	7	32.5	21.7	Fort Totten CDP
8	1	1	17	135.3	34	15	10	3	15.0	25.0	Hesper township
3	1	-	13	153.8	22	7	4	2	33.3	12.1	Impark township
5	3	-	11	118.2	19	8	8	3	20.8	33.3	Iowa township
11	5	1	30	133.3	57	25	17	6	18.6	24.3	Irvine township
3	2	2	31	90.3	37	20	7	5	37.3	11.9	Isabel township
4	3	-	16	125.0	30	14	7	4	16.7	19.4	Knox city
5	1	-	18	116.7	25	10	6	3	35.9	15.4	Knox township
13	3	2	188	93.6	198	97	18	9	45.6	4.9	Lake Ibsen township
-	1	-	9	122.2	14	8	1	1	30.0	5.0	Lallie township
68	30	14	236	96.6	346	179	112	60	25.4	24.1	Lallie North UT
5	1	3	45	84.4	54	27	9	7	34.9	10.8	Leeds city
-	2	1	8	75.0	11	6	3	2	21.4	21.4	Leeds township
1	3	2	15	128.7	28	11	6	2	17.6	17.6	Lohnes township
64	74	65	269	85.1	414	232	203	134	16.9	40.8	McClellan township
3	1	-	9	144.4	15	5	4	1	31.8	18.2	Maddock city
25	25	8	153	107.8	247	120	58	28	22.3	18.2	Minco township
23	12	4	555	94.1	580	292	39	21	46.1	3.6	Minnewaukan city
9	3	3	26	115.4	41	22	15	8	26.8	26.8	Mission township
6	3	4	36	94.4	47	23	13	8	32.9	18.6	Normania township
6	12	-	44	84.1	63	34	18	13	22.2	22.2	North Viking township
10	3	1	45	102.2	64	30	14	8	29.7	15.4	Oberon city
9	-	1	40	100.0	48	23	10	5	40.0	12.5	Oberon township
4	-	3	20	130.0	36	16	7	2	21.7	15.2	Pleasant Lake township
9	5	-	30	110.0	45	20	14	6	28.6	22.2	Rich Valley township
4	5	2	19	105.3	29	12	11	5	25.6	28.2	Riggin township
5	3	-	31	122.6	48	22	8	4	30.4	11.6	Rock township
5	4	-	18	138.9	33	16	9	6	23.3	20.9	South Viking township
5	3	1	25	100.0	32	16	9	6	36.0	18.0	Twin Lake township
5	5	2	39	92.3	55	28	12	7	26.7	16.0	Twin Tree township
2	6	-	38	105.3	44	24	8	5	43.6	10.3	Warwick city
3	4	-	14	135.7	28	10	7	3	15.2	21.2	Warwick township
8	1	1	25	140.0	46	22	10	6	23.3	16.7	West Antelope township
16	7	3	212	107.5	246	119	26	15	44.1	5.9	West Bay township
4	2	-	13	100.0	19	9	6	3	26.9	23.1	Wood Lake township
4	3	3	18	100.0	30	13	10	2	16.7	27.8	York city
73	54	15	417	112.9	667	314	142	65	24.9	16.0	York township
8	7	-	51	96.1	74	38	15	10	26.0	15.0	Billings County
44	35	10	257	112.1	402	187	89	38	26.2	16.3	Medora city
21	12	5	109	122.9	191	89	38	17	21.4	15.6	North Billings UT
696	552	274	3 549	101.4	5 562	2 792	1 522	889	22.2	21.3	South Billings UT
1	-	-	16	118.8	30	13	1	-	14.3	2.9	Bottineau County
7	4	1	25	88.0	37	20	12	8	21.3	25.5	Amity township
4	4	-	31	151.6	65	28	8	3	16.7	10.3	Antler city
4	1	-	15	113.3	25	11	5	2	21.9	15.6	Antler township
3	1	-	13	130.8	18	8	4	1	40.0	13.3	Bentlnck township
211	261	163	1 245	87.6	1 893	1 023	635	419	19.0	27.2	Blaine township
3	2	1	34	76.5	39	22	6	5	35.0	10.0	Bottineau city
1	1	-	13	115.4	21	10	2	2	25.0	7.1	Brander township
6	4	-	20	125.0	38	16	10	5	15.6	22.2	Cecil township
14	5	1	51	133.3	91	41	20	12	23.5	16.8	Chatfield township
6	-	1	28	100.0	44	22	7	2	21.4	12.5	Cordelia township
11	2	2	50	122.0	83	40	15	9	25.2	13.5	Cut Bank township
5	3	-	17	123.5	34	15	8	2	10.5	21.1	Dalen township
4	3	-	26	107.7	39	18	7	4	27.8	13.0	Eidsvold township
3	2	1	18	105.6	31	15	6	1	16.2	16.2	Elms township
2	-	-	22	72.7	24	14	2	1	36.8	5.3	Elysian township
16	2	1	38	123.7	69	34	19	8	18.8	22.4	Gardena city
4	6	-	29	89.7	42	20	10	5	23.6	18.2	Haram township
1	-	-	9	111.1	10	4	1	-	47.4	5.3	Hastings township
8	2	1	58	110.3	92	43	11	6	24.6	9.0	Hoffman township
8	4	2	30	136.7	53	21	14	5	25.4	19.7	Homen township
7	4	6	22	100.0	41	20	17	10	6.8	38.6	Kane township
1	-	-	12	133.3	26	10	1	-	7.1	3.6	Kramer city
14	12	5	122	107.4	188	92	31	17	25.7	12.3	Landa city
5	7	-	30	110.0	49	24	12	6	22.2	19.0	Lansford city
9	1	1	18	116.7	31	15	11	4	20.5	28.2	Lansford township
2	-	-	11	100.0	13	6	2	1	40.9	9.1	Lewis township
13	2	4	46	97.8	72	36	19	11	20.9	20.9	Lordsburg township
5	4	1	30	113.3	45	20	10	4	29.7	15.6	Maxbass city
2	3	1	16	87.5	21	10	6	2	30.0	20.0	Mount Rose township
15	8	4	48	83.3	74	41	27	16	15.9	30.7	Newborg township
5	2	1	16	62.5	22	12	8	4	15.4	30.8	Newburg city
6	6	-	30	106.7	45	22	12	7	27.4	19.4	Oak Creek township
13	4	-	33	97.0	50	25	17	8	23.1	26.2	Oak Valley township
2	3	-	8	137.5	15	7	5	3	21.1	26.3	Ostby township
-	-	-	8	100.0	14	7	-	-	12.5	-	Overly city
17	7	3	98	117.3	152	77	27	13	28.6	12.7	Peabody township
6	2	2	14	128.6	27	12	10	6	15.6	31.3	Pickering township
4	3	1	24	104.2	39	21	8	3	20.4	16.3	Renville township
66	25	2	255	113.7	442	200	93	42	18.9	17.1	Richburg township
6	10	1	25	116.0	46	20	17	9	14.8	31.5	Roland township
7	14	1	31	106.5	49	22	22	11	23.4	34.4	Scandia township
8	3	3	38	107.9	55	25	14	5	30.4	17.7	Scotia township
9	5	2	36	91.7	46	24	16	10	33.3	23.2	Sergius township
10	4	1	41	102.4	54	26	15	6	34.9	18.1	Sherman township
7	-	1	15	153.3	30	12	8	3	21.1	21.1	Souris city
											Starbuck township

Table 1. **Age and Sex: 2000**—Con.

[For information on confidentiality protection, nonsampling error, and definitions, see text]

State County County Subdivision Place	Total population	Median age	Age								
			Under 5 years	5 to 17 years	18 to 20 years	21 to 24 years	25 to 34 years	35 to 44 years	45 to 54 years	55 to 59 years	60 to 64 years
Bottineau County—Con.											
Stone Creek township	28	44.5	-	5	-	-	3	6	8	3	2
Tacoma township	94	40.0	-	24	7	3	4	15	24	4	-
Wayne township	27	41.5	1	7	-	-	1	7	1	1	1
Wellington township	58	35.5	4	16	1	2	4	14	12	-	1
Westhope city	533	48.0	13	96	15	11	33	71	82	39	22
Wheaton township	58	38.0	5	10	2	2	6	8	5	2	2
Whitby township	17	32.3	-	6	1	-	3	3	2	-	2
Whitteron township	447	40.2	17	115	14	9	36	81	78	33	19
Willow City city	221	45.9	5	46	5	7	14	29	30	7	11
Willow Vale township	34	44.0	1	8	1	-	2	7	5	2	2
Bowman County											
Adelaide township	31	47.5	1	7	2	1	2	2	7	4	-
Amor township	23	61.3	1	2	-	1	2	2	2	1	2
Bowman city	1 600	44.6	73	274	39	44	139	241	203	82	75
Bowman township	269	39.6	13	72	8	2	17	63	45	11	8
Boyesen township	20	35.5	3	3	-	1	2	4	5	-	2
Buena Vista township	31	41.5	2	10	-	-	1	4	8	-	1
Fischbein township	20	46.5	-	2	-	2	3	3	1	2	1
Gascoyne city	23	60.5	1	6	-	-	2	2	2	-	4
Gascoyne township	20	46.0	-	4	-	2	-	1	5	3	-
Gem township	19	42.3	1	2	1	-	1	7	1	1	-
Goldfield township	31	53.8	1	4	-	-	3	4	4	1	3
Grainbelt township	50	39.0	3	13	1	2	4	10	11	1	2
Grand River township	27	20.5	-	13	1	1	-	7	5	-	-
Haley township	23	49.5	1	3	-	1	3	2	2	-	1
Hart UT	27	40.2	-	8	2	3	-	4	5	-	-
Ladd township	26	42.0	1	8	-	-	1	5	5	4	1
Langberg township	16	43.5	-	6	-	-	-	3	4	2	1
Marion township	21	43.5	1	3	1	1	3	3	1	1	1
Minnehaha township	22	41.0	1	5	1	-	3	1	3	5	1
Nebo township	40	39.0	2	9	2	2	-	9	7	-	-
Rhame city	189	39.5	6	39	8	7	22	35	28	3	5
Rhame township	32	37.0	1	5	2	3	4	4	6	-	-
Scranton city	304	43.0	17	62	8	4	30	43	46	21	19
Scranton township	73	39.3	5	13	2	1	8	11	9	11	2
Star township	38	45.5	2	7	1	-	5	3	8	5	2
Stillwater township	32	47.5	-	8	-	-	-	4	11	1	1
Sunny Slope township	10	67.5	-	-	-	-	-	-	3	1	1
Talbot township	80	43.0	7	10	5	5	6	15	13	7	3
West Bowman UT	106	38.3	6	21	3	1	17	19	13	9	4
Whiting township	39	43.5	-	12	-	-	3	6	5	1	1
Burke County											
Battleview township	88	42.8	3	14	2	-	5	24	16	2	9
Bowbells city	406	41.5	22	89	9	6	30	71	57	22	15
Bowbells township	43	47.5	1	8	2	-	2	3	9	2	1
Carter township	14	51.5	-	1	1	-	2	2	3	1	-
Clayton township	33	53.8	-	6	-	1	2	4	4	3	2
Cleary township	42	37.5	3	8	3	2	5	7	6	1	1
Columbus city	151	57.4	3	13	3	-	11	19	23	12	14
Colville township	70	41.0	3	18	2	1	5	9	11	5	3
Dale township	30	40.5	1	7	-	-	2	8	3	1	3
Dimond township	15	56.8	-	-	-	1	-	2	3	2	1
Fay township	26	53.0	1	4	-	1	1	2	5	2	6
Flaxton city	73	52.8	2	14	-	-	3	12	9	3	9
Foothills township	27	43.8	-	4	1	-	2	9	3	2	-
Forthun township	11	51.5	-	2	-	-	-	7	7	-	-
Garness township	69	43.2	3	17	4	1	5	9	10	2	2
Harmonious township	24	52.5	1	3	-	-	1	3	5	3	1
Kandyohi township	27	39.5	1	7	1	-	2	5	1	-	5
Keller township	35	38.8	1	12	1	1	-	8	5	-	-
Lakeview township	13	66.5	-	-	-	-	-	1	3	2	-
Larson city	17	72.5	-	2	-	-	-	2	4	-	-
Leaf Mountain township	34	57.0	-	3	1	-	2	5	4	4	1
Lignite city	174	48.0	6	24	1	7	18	16	51	5	10
Lucy township	15	58.8	-	-	-	-	1	2	3	2	-
Minnesota township	23	56.6	-	-	1	1	2	1	3	5	1
North Burke UT	3	43.5	-	1	-	-	-	1	1	-	-
North Star township	48	46.0	1	12	1	1	3	4	9	4	3
Portal city	131	48.3	3	20	1	1	11	21	27	11	13
Portal township	42	35.0	2	12	1	-	6	2	9	-	1
Powers Lake city	309	46.8	14	52	8	3	26	45	31	13	10
Richland township	24	58.0	-	3	-	-	-	5	1	4	2
Roseland township	30	41.5	1	5	2	-	5	4	4	-	2
Short Creek township	37	49.8	4	1	1	-	3	5	11	2	1
Soo township	27	50.3	1	4	-	-	-	5	7	-	2
Thorson township	34	49.0	3	3	1	-	4	4	5	3	3
Vale township	21	42.8	-	4	-	1	2	4	7	-	1
Vanville township	30	51.0	1	4	1	1	2	2	5	5	3
Ward township	46	45.7	1	8	1	-	6	5	9	6	7
Burleigh County											
Apple Creek township	1 243	36.1	99	12 845	3 785	3 855	8 991	11 331	9 925	3 188	2 526
Bismarck city	55 532	36.5	3 356	9 718	2 790	3 401	7 339	8 842	7 815	2 545	2 084
Boyd township	136	36.5	7	38	6	-	14	29	21	4	6
Burnt Creek-Riverview UT	1 306	37.4	81	299	47	29	135	273	236	78	56
Canfield township	15	61.5	1	-	-	2	3	-	-	-	4
Christiania township	35	47.5	2	7	2	-	-	6	6	2	7
Clear Lake township	30	33.0	4	6	-	1	6	1	4	1	4
Crofte township	139	39.5	8	23	3	11	17	22	21	10	8
Cromwell township	27	45.5	2	4	2	2	2	1	6	2	2
Driscoll township	163	43.2	3	36	6	6	11	25	18	18	6
Ecklund township	105	49.5	5	13	5	1	10	14	14	3	9
Estherville township	28	54.5	1	3	-	-	2	3	5	2	6

Table 1. **Age and Sex: 2000—Con.**

[For information on confidentiality protection, nonsampling error, and definitions, see text]

Age—Con.			Age and sex						Percent of total population		State County County Subdivision Place
65 to 74 years	75 to 84 years	85 years and over	All ages		18 years and over		65 years and over		Under 18 years	65 years and over	
			Female	Males per 100 females	Total	Female	Total	Female			
-	-	1	9	211.1	23	8	1	-	17.9	3.6	Bottineau County—Con.
6	5	2	46	104.3	70	33	13	7	25.5	13.8	Stone Creek township
6	2	-	12	125.0	19	8	8	3	29.6	29.6	Tacoma township
4	-	-	26	123.1	38	16	4	3	34.5	6.9	Wayne township
44	64	43	285	87.0	424	233	151	109	20.5	28.3	Wellington township
7	6	3	25	132.0	43	16	16	6	25.9	27.6	Westhope city
-	-	-	6	183.3	11	6	-	-	35.3	-	Wheaton township
30	13	2	204	119.1	315	153	45	21	29.5	10.1	Whitby township
34	24	9	107	106.5	170	84	67	37	23.1	30.3	Whitteron township
4	2	-	14	142.9	25	11	6	2	26.5	17.6	Willow City city
337	244	126	1 666	94.6	2 462	1 252	707	393	24.1	21.8	Willow Vale township
-	5	-	17	82.4	23	12	5	3	25.8	16.1	Bowman County
3	5	2	11	109.1	20	9	10	5	13.0	43.5	Adelaide township
197	137	96	837	91.2	1 253	661	430	248	21.7	26.9	Amor township
21	5	4	132	103.8	184	88	30	12	31.6	11.2	Bowman city
-	-	-	11	81.8	14	6	-	-	30.0	-	Bowman township
5	-	-	14	121.4	19	9	5	2	38.7	16.1	Boyesen township
2	-	4	12	66.7	18	10	6	4	10.0	30.0	Buena Vista township
4	4	-	10	130.0	16	7	8	2	30.4	16.1	Fischbein township
2	-	1	12	66.7	16	9	3	2	20.0	34.8	Gascoyne city
5	-	-	8	137.5	16	7	5	2	15.8	15.0	Gascoyne township
3	6	2	16	93.8	26	13	11	6	16.1	26.3	Gem township
1	2	-	24	108.3	34	18	3	3	32.0	35.5	Goldfield township
-	-	-	15	80.0	14	8	-	-	48.1	6.0	Grainbelt township
6	4	-	13	76.9	19	9	10	4	17.4	48.1	Grand River township
4	1	-	12	125.0	19	9	5	3	29.6	43.5	Haley township
-	1	-	14	85.7	17	6	1	-	34.6	18.5	Hart UT
-	-	-	7	128.6	10	4	-	-	37.5	3.8	Ladd township
-	6	-	12	75.0	17	9	6	3	19.0	28.6	Langberg township
2	-	-	13	69.2	16	8	2	1	27.3	19.0	Marion township
5	4	-	19	110.5	29	17	9	5	27.5	9.1	Minnehaha township
18	15	3	98	92.9	144	70	36	22	23.8	22.5	Nebo township
2	4	1	13	146.2	26	10	7	3	18.8	19.0	Rhame city
25	23	6	155	96.1	225	111	54	28	26.0	21.9	Rhame township
6	3	2	40	82.5	55	27	11	6	24.7	17.8	Scranton city
5	-	-	17	123.5	29	14	5	3	23.7	15.1	Scranton township
3	4	-	19	68.4	24	13	7	3	25.0	13.2	Star township
4	1	-	5	100.0	10	5	5	3	-	21.9	Stillwater township
5	2	2	39	105.1	63	30	9	5	21.3	50.0	Sunny Slope township
4	8	1	50	112.0	79	39	13	8	25.5	11.3	Talbot township
5	4	2	21	85.7	27	14	11	7	30.8	12.3	West Bowman UT
300	197	65	1 112	101.6	1 775	871	562	302	20.8	28.2	Whiting township
8	3	2	37	137.8	71	28	13	5	19.3	25.1	Burke County
34	33	18	212	91.5	295	155	85	49	27.3	14.8	Battleview township
8	5	2	18	138.9	34	16	15	7	20.9	20.9	Bowbells city
2	2	-	7	100.0	13	6	4	2	7.1	34.9	Bowbells township
7	3	1	15	120.0	27	12	11	5	18.2	28.6	Carter township
5	1	-	19	121.1	31	13	6	2	26.2	33.3	Clayton township
29	17	7	75	101.3	135	66	53	29	10.6	14.3	Cleary township
5	7	1	36	94.4	49	27	13	8	30.0	35.1	Columbus city
5	-	-	16	87.5	22	10	5	2	26.7	18.6	Colville township
4	2	-	8	87.5	15	8	6	4	-	16.7	Dale township
2	1	1	10	160.0	21	10	4	2	19.2	40.0	Dimond township
15	4	2	35	108.6	57	27	21	11	21.9	15.4	Fay township
4	2	-	13	107.7	23	10	6	3	14.8	28.8	Flaxton city
2	-	-	5	120.0	9	4	2	1	18.2	22.2	Foothills township
6	9	1	39	76.9	49	26	16	8	18.2	18.2	Forthun township
3	4	-	9	166.7	20	8	7	3	29.0	23.2	Garness township
3	2	-	11	145.5	19	9	5	2	16.7	29.2	Harmonious township
1	3	3	17	105.9	22	10	7	4	29.6	18.5	Kandyohi township
5	1	1	6	116.7	13	6	7	4	37.1	20.0	Keller township
1	6	2	7	142.9	15	7	9	4	-	53.8	Lakeview township
9	5	-	15	126.7	31	14	14	6	11.8	52.9	Larson city
17	13	6	87	100.0	144	74	36	22	8.8	41.2	Leaf Mountain township
6	1	-	7	114.3	15	7	7	4	17.2	20.7	Lignite city
6	3	-	11	109.1	23	11	9	5	-	46.7	Lucy township
-	-	-	2	50.0	2	1	-	-	33.3	39.1	Minnesota township
7	3	-	23	108.7	35	17	10	2	27.1	-	North Burke UT
16	5	2	65	101.5	108	56	23	13	20.8	20.8	North Star township
4	5	-	23	82.6	28	15	9	5	17.6	17.6	Portal city
48	44	15	169	82.8	243	127	107	67	33.3	21.4	Portal township
9	-	-	12	100.0	21	10	9	3	21.4	34.6	Powers Lake city
7	-	-	12	150.0	24	11	7	2	12.5	37.5	Richland township
5	4	-	15	146.7	32	12	9	5	20.0	23.3	Roseland township
5	2	1	13	107.7	22	10	8	4	13.5	24.3	Short Creek township
4	4	-	16	112.5	28	12	8	4	18.5	29.6	Soo township
2	-	-	11	90.9	17	9	2	2	17.6	23.5	Thorson township
3	3	-	17	76.5	25	12	6	3	19.0	9.5	Vale township
3	-	-	19	142.1	37	15	3	-	16.7	20.0	Vanville township
4 514	2 928	1 198	35 498	95.5	52 241	26 991	8 640	5 108	19.6	6.5	Ward township
58	25	4	604	105.8	891	430	87	38	24.7	12.4	Burleigh County
3 888	2 631	1 123	28 641	93.9	42 458	22 131	7 642	4 593	28.3	7.0	Apple Creek township
7	2	2	61	123.0	91	43	11	7	23.5	13.8	Bismarck city
55	15	2	643	103.1	926	445	72	28	33.1	8.1	Boyd township
2	3	-	5	200.0	14	5	5	2	29.1	5.5	Burnt Creek-Riverview UT
3	-	-	16	118.8	26	14	3	1	6.7	33.3	Canfield township
1	2	-	13	130.8	20	8	3	1	25.7	8.6	Christiania township
10	5	1	62	124.2	108	48	16	7	33.3	10.0	Clear Lake township
1	2	1	13	107.7	21	11	4	3	22.3	11.5	Crofte township
22	12	-	79	106.3	124	58	34	17	22.2	14.8	Cromwell township
25	5	1	47	123.4	87	38	31	16	23.9	20.9	Driscoll township
6	-	-	14	100.0	24	11	6	1	17.1	29.5	Ecklund township
									14.3	21.4	Esterville township

Table 1. **Age and Sex: 2000**—Con.

[For information on confidentiality protection, nonsampling error, and definitions, see text]

State County County Subdivision Place	Total population	Median age	Age									
			Under 5 years	5 to 17 years	18 to 20 years	21 to 24 years	25 to 34 years	35 to 44 years	45 to 54 years	55 to 59 years	60 to 64 years	
Burleigh County—Con.												
Florence Lake township	14	43.0	-	4	-	-	-	-	4	3	-	1
Francis township	28	37.5	4	5	-	1	3	5	8	5	1	2
Ghylin township	36	42.0	2	7	-	-	5	8	4	4	5	1
Gibbs township	981	35.6	62	240	34	24	119	186	181	44	44	43
Glenview township	148	45.5	6	22	3	3	18	21	30	15	8	8
Grass Lake township	74	36.0	9	16	2	1	9	12	9	1	4	4
Harriet-Lien township	74	49.0	5	12	4	2	6	5	10	5	5	5
Hay Creek township	2 650	33.2	228	665	97	61	353	584	404	84	61	61
Hazel Grove township	18	50.5	1	-	1	1	2	2	4	2	2	2
Lincoln city	1 730	27.4	180	515	64	54	326	317	184	38	14	14
Lincoln-Fort Rice UT	3 039	24.4	160	597	614	158	272	437	439	138	64	64
Logan township	47	42.8	-	11	4	-	1	10	7	4	2	2
Long Lake township	109	37.9	3	31	5	2	6	23	20	4	1	1
Lyman UT	15	45.5	1	2	1	1	-	2	5	-	-	-
McKenzie township	83	47.9	3	14	1	2	5	9	14	3	7	7
Menoken township	147	39.8	13	20	4	7	13	32	19	10	9	9
Missouri township	132	39.5	4	34	6	2	9	34	20	5	6	6
Morton township	50	38.5	3	13	1	1	6	11	2	5	7	7
Naughton township	141	35.6	13	25	11	6	13	17	29	13	5	5
Painted Woods township	111	46.5	3	24	1	4	4	19	23	8	1	1
Phoenix UT	23	43.8	1	4	1	-	3	4	3	3	1	1
Regan city	43	45.3	2	3	1	3	7	5	7	3	1	1
Richmond township	39	40.5	2	8	1	1	3	8	6	2	2	2
Rock Hill township	30	53.0	1	2	1	2	2	3	5	3	2	2
Schrunk township	26	42.0	-	6	-	1	1	6	4	1	3	3
Sibley Butte township	26	40.5	-	8	1	1	1	3	6	3	1	1
Steiber township	18	49.0	1	4	-	-	-	4	-	4	1	1
Sterling township	172	41.0	6	30	7	7	16	36	30	7	6	6
Taft township	50	29.5	6	12	-	2	7	6	3	3	7	7
Telfer township	64	46.5	3	9	1	2	8	8	8	5	2	2
Thelma township	19	53.3	2	-	-	1	1	3	4	3	1	1
Trygg township	47	38.8	6	5	4	1	4	8	8	3	3	3
Wild Rose township	23	39.5	2	5	1	-	1	5	1	1	3	3
Wilson township	50	33.0	5	12	-	1	9	5	8	3	3	3
Wilton city (part)	242	32.8	16	63	9	10	28	37	25	10	7	7
Wing city	124	53.0	4	13	2	3	12	9	26	7	7	7
Wing township	34	39.5	4	4	1	-	6	4	8	1	2	2
Cass County												
Addison township	104	36.0	2	30	4	3	10	19	17	1	4	4
Alice city	56	47.5	3	6	2	4	3	6	14	4	5	5
Amenia city	89	40.8	5	21	4	1	6	15	15	3	5	5
Amenia township	112	39.3	5	30	-	2	9	21	18	5	8	8
Argusville city	147	40.5	10	21	5	3	21	26	28	8	11	11
Arthur city	402	39.7	25	91	2	8	44	51	28	21	15	15
Arthur township	82	33.0	6	28	-	2	8	15	10	7	2	2
Ayr city	23	50.5	-	3	1	-	2	3	4	-	-	-
Ayr township	78	46.7	3	12	1	-	3	15	16	7	5	5
Barnes township	525	34.6	38	139	17	12	61	109	94	20	15	15
Bell township	41	36.8	3	8	1	-	5	7	6	5	2	2
Berlin township	136	39.5	8	31	7	2	11	19	29	11	6	6
Briarwood city	78	38.3	4	26	1	-	5	14	16	4	3	3
Buffalo city	209	42.7	9	37	1	5	24	36	23	14	6	6
Buffalo township	79	38.2	10	14	2	-	11	13	9	1	7	7
Casselton city	1 855	34.4	161	426	47	63	257	309	232	88	54	54
Casselton township	117	46.9	2	19	1	3	12	14	24	3	4	4
Clifton township	71	36.3	5	16	1	-	9	19	7	2	1	1
Cornell township	60	42.0	4	11	2	-	7	10	7	5	3	3
Davenport city	261	30.4	27	62	7	13	41	53	24	11	3	3
Davenport township	134	42.3	5	22	11	4	7	28	29	11	4	4
Dows township	63	32.5	7	14	-	3	11	7	6	4	3	3
Durbin township	92	39.0	5	20	-	2	12	18	9	8	4	4
Eldred township	91	45.8	7	12	1	2	5	17	19	4	6	6
Empire township	109	48.2	2	16	2	3	8	14	22	11	9	9
Enderlin city (part)	5	52.5	-	-	-	1	-	-	2	-	2	2
Erie township	134	40.5	3	34	5	4	7	16	23	8	8	8
Erie CDP	65	47.3	-	15	1	1	3	8	12	4	4	4
Everest township	98	43.0	9	16	1	2	8	18	21	5	5	5
Fargo city	90 599	30.1	5 763	13 373	6 707	10 680	15 144	13 051	11 054	3 157	2 550	2 550
Fargo township	6	44.5	-	1	1	-	-	1	1	-	-	-
Frontier city	273	35.1	14	83	11	11	17	59	59	12	5	5
Gardner city	80	39.3	3	19	2	1	10	12	13	3	6	6
Gardner township	123	40.6	1	33	3	1	5	32	20	8	5	5
Gill township	104	36.8	7	27	1	2	10	18	19	6	2	2
Grandin city (part)	181	38.5	13	36	3	7	21	34	23	7	10	10
Gunkel township	55	41.5	1	14	2	1	7	7	13	4	1	1
Harmony township	93	34.8	9	20	2	4	12	20	14	2	2	2
Harwood city	607	33.9	52	153	22	8	83	116	121	21	14	14
Harwood township	291	39.8	17	65	10	7	20	53	62	17	12	12
Highland township	116	38.4	6	31	3	-	9	24	15	8	8	8
Hill township	51	49.5	-	8	1	-	3	9	9	1	5	5
Horace city	915	30.2	78	249	33	31	165	178	95	34	14	14
Howes township	82	39.0	3	23	3	1	4	18	11	4	7	7
Hunter city	326	39.9	24	67	6	6	33	44	37	14	13	13
Hunter township	86	45.4	2	17	2	3	3	14	14	7	6	6
Kindred city	614	33.7	49	140	12	20	97	118	55	21	19	19
Kinyon township	103	37.3	7	19	3	3	14	21	12	8	5	5
Lake township	47	45.8	1	9	1	1	2	8	8	1	6	6
Leonard city	255	45.1	17	38	4	6	35	27	37	15	10	10
Leonard township	103	45.3	2	22	2	3	12	10	28	10	2	2
Maple River township	126	40.0	5	32	2	1	11	24	21	4	7	7
Mapleton city	606	29.1	48	169	29	24	96	116	85	14	9	9
Mapleton township	251	36.7	16	59	5	7	27	56	44	11	10	10
Noble township	89	37.3	4	21	1	3	9	16	10	4	9	9
Normanna township	339	39.6	16	84	13	5	25	68	56	13	22	22

Table 1. **Age and Sex: 2000**—Con.

[For information on confidentiality protection, nonsampling error, and definitions, see text]

Age—Con.			Age and sex						Percent of total population		State County County Subdivision Place
65 to 74 years	75 to 84 years	85 years and over	All ages		18 years and over		65 years and over		Under 18 years	65 years and over	
			Female	Males per 100 females	Total	Female	Total	Female			
2	-	-	6	133.3	10	6	2	2	28.6	14.3	Burleigh County—Con.
1	1	-	16	75.0	19	11	2	2	32.1	7.1	Florence Lake township
2	1	-	14	157.1	27	13	4	3	25.0	11.1	Francis township
29	15	4	473	107.4	679	336	48	22	30.8	4.9	Ghylin township
12	9	1	71	108.5	120	59	22	13	18.9	14.9	Gibbs township
11	-	-	39	89.7	49	22	11	5	33.8	14.9	Glenview township
9	5	6	33	124.2	57	26	20	9	23.0	27.0	Grass Lake township
85	27	1	1 282	106.7	1 757	849	113	51	33.7	4.3	Harriet-Lien township
3	-	-	9	100.0	17	8	3	2	5.6	16.7	Hay Creek township
27	10	1	864	100.2	1 035	520	38	20	40.2	2.2	Hazel Grove township
83	48	29	1 589	91.3	2 282	1 221	160	101	24.9	5.3	Lincoln city
4	4	-	24	95.8	36	17	8	4	23.4	17.0	Lincoln-Fort Rice UT
4	9	1	52	109.6	75	38	14	7	31.2	12.8	Logan township
2	1	-	7	114.3	12	5	3	1	20.0	20.0	Long Lake township
17	7	1	40	107.5	66	35	25	15	20.5	30.1	Lyman UT
17	3	-	68	116.2	114	54	20	12	22.4	13.6	McKenzie township
7	4	1	57	131.6	94	42	12	7	28.8	9.1	Menoken township
1	-	-	24	108.3	34	15	1	-	32.0	2.0	Missouri township
7	2	-	75	88.0	103	57	9	3	27.0	6.4	Morton township
14	10	-	55	101.8	84	40	24	10	24.3	21.6	Naughton township
3	-	-	12	91.7	18	9	3	1	21.7	13.0	Painted Woods township
10	-	1	19	126.3	38	16	11	5	11.6	25.6	Phoenix UT
3	3	-	17	129.4	29	15	6	4	25.6	15.4	Regan city
8	1	-	13	130.8	27	11	9	4	10.0	30.0	Richmond township
1	3	-	11	136.4	20	7	4	2	23.1	15.4	Rock Hill township
-	1	1	12	116.7	18	8	2	-	30.8	7.7	Schrunk township
4	-	-	9	100.0	13	6	4	2	27.8	22.2	Sibley Butte township
12	14	1	71	142.3	136	58	27	12	20.9	15.7	Steiber township
4	-	-	27	85.2	32	16	4	2	36.0	8.0	Sterling township
13	3	2	34	88.2	52	25	18	11	18.8	28.1	Taft township
1	1	2	7	171.4	17	7	4	3	10.5	21.1	Telfer township
1	4	-	23	104.3	36	18	5	4	23.4	10.6	Thelma township
4	-	-	11	109.1	16	7	4	2	30.4	17.4	Trygg township
2	2	-	26	92.3	33	16	4	2	34.0	8.0	Wild Rose township
16	18	3	126	92.1	163	85	37	24	32.6	15.3	Wilson township
17	16	8	65	90.8	107	57	41	24	13.7	33.1	Wilton city (part)
-	4	-	19	78.9	26	14	4	3	23.5	11.8	Wing city
6 054	4 118	1 729	61 462	100.3	94 290	47 265	11 901	7 045	23.4	9.7	Wing township
6	8	-	57	82.5	72	37	14	8	30.8	13.5	Cass County
4	2	3	24	133.3	47	19	9	2	16.1	16.1	Addison township
10	2	2	41	117.1	63	28	14	6	29.2	15.7	Alice city
7	7	-	51	119.6	77	37	14	7	31.3	12.5	Amenia city
12	2	-	71	107.0	116	54	14	7	21.1	9.5	Amenia township
31	45	41	217	85.3	286	156	117	71	28.9	29.1	Argusville city
3	1	-	36	127.8	48	20	4	1	41.5	4.9	Arthur city
4	6	-	13	76.9	20	10	10	5	13.0	43.5	Arthur township
11	4	1	33	136.4	63	28	16	7	19.2	20.5	Ayr city
12	6	2	263	99.6	348	173	20	10	33.7	3.8	Ayr township
2	2	-	20	105.0	30	15	4	3	26.8	9.8	Barnes township
4	7	1	67	103.0	97	45	12	6	28.7	8.8	Bell township
2	2	1	36	116.7	48	21	5	2	38.5	6.4	Berlin township
29	21	4	105	99.0	163	85	54	36	22.0	25.8	Briarwood city
8	3	1	35	125.7	55	26	12	4	30.4	15.2	Buffalo city
111	85	22	900	106.1	1 268	628	218	114	31.6	11.8	Buffalo township
7	15	13	62	88.7	96	52	35	20	17.9	29.9	Casselton city
8	1	1	33	115.2	50	21	10	4	29.6	14.1	Casselton township
7	4	-	29	106.9	45	23	11	5	25.0	18.3	Clifton township
8	11	1	135	93.3	172	87	20	10	34.1	7.7	Cornell township
4	7	2	64	109.4	107	50	13	7	20.1	9.7	Davenport city
3	4	1	31	103.2	42	21	8	4	33.3	12.7	Davenport township
11	3	-	40	130.0	67	30	14	7	27.2	15.2	Dows township
9	7	2	47	93.6	72	38	18	10	20.9	19.8	Durbin township
13	8	1	48	127.1	91	40	22	9	16.5	20.2	Eldred township
-	-	-	2	150.0	5	2	-	-	-	-	Empire township
11	13	2	64	109.4	97	48	26	12	27.6	19.4	Enderlin city (part)
7	10	-	30	116.7	50	24	17	7	23.1	26.2	Erie township
4	5	4	41	139.0	73	31	13	4	25.5	13.3	Erie CDP
4 532	3 171	1 417	45 293	100.0	71 463	35 862	9 120	5 561	21.1	10.1	Everest township
1	-	-	3	100.0	5	2	2	1	16.7	33.3	Fargo city
-	2	-	133	105.3	176	84	2	-	35.5	0.7	Fargo township
1	5	5	40	100.0	58	29	11	8	27.5	13.8	Frontier city
7	8	-	52	136.5	89	37	15	6	27.6	12.2	Gardner city
5	7	-	45	131.1	70	32	12	6	32.7	11.5	Gardner township
14	11	2	91	98.9	132	63	27	12	27.1	14.9	Gill township
4	1	-	31	77.4	40	21	5	2	27.3	9.1	Grandin city (part)
6	2	-	44	111.4	64	29	8	3	31.2	8.6	Gunkel township
11	5	1	295	105.8	402	195	17	7	33.8	2.8	Harmony township
19	9	-	146	99.3	209	100	28	13	28.2	9.6	Harwood city
6	5	1	56	107.1	79	41	12	6	31.9	10.3	Harwood township
9	4	2	25	104.0	43	21	15	8	15.7	29.4	Highland township
17	16	5	475	92.6	588	297	38	17	35.7	4.2	Hill township
6	2	-	37	121.6	56	26	8	4	31.7	9.8	Horace city
40	25	17	171	90.6	235	120	82	47	27.9	25.2	Howes township
12	4	2	40	115.0	67	33	18	9	22.1	20.9	Hunter city
38	27	18	318	93.1	425	220	83	48	30.8	13.5	Hunter township
7	3	1	55	87.3	77	36	11	6	25.2	10.7	Kindred city
6	4	-	26	80.8	37	20	10	6	21.3	21.3	Kinyon township
23	29	14	130	96.2	200	101	66	38	21.6	25.9	Lake township
6	5	1	53	94.3	79	40	12	7	23.3	11.7	Leonard city
10	6	3	57	121.1	89	41	19	9	29.4	15.1	Leonard township
13	3	-	300	102.0	389	187	16	6	35.8	2.6	Maple River township
6	8	2	120	109.2	176	84	16	9	29.9	6.4	Mapleton city
6	4	2	40	122.5	64	27	12	5	28.1	13.5	Mapleton township
27	10	-	169	100.6	239	110	37	15	29.5	10.9	Noble township
											Normanna township

Table 1. **Age and Sex: 2000**—Con.

[For information on confidentiality protection, nonsampling error, and definitions, see text]

State County County Subdivision Place	Total population	Median age	Age								
			Under 5 years	5 to 17 years	18 to 20 years	21 to 24 years	25 to 34 years	35 to 44 years	45 to 54 years	55 to 59 years	60 to 64 years
Cass County—Con.											
North River city	65	37.8	2	19	2	3	3	12	17	7	-
Oxbow city	248	37.5	22	56	7	3	24	62	48	9	4
Page city	225	42.8	13	42	7	7	18	29	36	8	9
Page township	60	33.5	7	14	1	-	8	9	9	3	4
Pleasant township	426	38.6	34	84	11	9	46	86	87	21	15
Pontiac township	100	47.0	11	14	-	-	9	13	26	9	4
Prairie Rose city	68	36.0	4	20	3	2	4	13	19	3	-
Raymond township	270	39.1	19	66	4	7	31	44	61	14	5
Reed township	1 224	36.1	96	324	51	27	89	277	212	59	39
Reile's Acres city	254	32.6	26	70	11	6	31	44	46	16	-
Rich township	79	39.3	3	18	1	1	12	9	14	5	6
Rochester township	70	37.0	6	13	1	3	10	12	6	5	7
Rush River township	107	42.5	8	21	1	2	13	16	17	7	6
Stanley township	2 296	35.9	196	532	62	66	248	525	372	115	77
Tower township	67	43.3	2	13	3	1	6	13	16	4	4
Tower City city (part)	252	30.0	14	55	5	6	31	40	45	7	10
Walburg township	175	35.7	13	40	4	8	19	34	21	5	2
Warren township	133	36.9	9	28	2	2	16	37	12	8	6
Watson township	90	46.0	5	13	2	2	6	15	14	6	9
West Fargo city	14 940	32.3	1 109	3 258	627	701	2 453	2 624	2 141	603	427
Wheatland township	147	41.3	3	35	5	7	10	24	18	15	10
Wheatland CDP	60	36.5	2	18	3	2	3	10	10	4	3
Wiser township	70	49.5	2	6	1	5	1	15	14	4	1
Cavalier County											
Alma township	4 831	45.2	208	980	98	82	337	691	743	286	299
Alsen city	37	41.5	3	3	-	2	5	7	7	-	7
Banner township	68	40.7	3	19	2	-	6	13	7	4	5
Billings township	43	45.5	5	7	2	-	3	4	6	4	3
Bruce township	26	39.5	-	8	-	-	1	7	6	-	1
Byron township	31	47.3	1	6	-	2	4	2	7	2	1
Calio city	22	55.5	-	-	1	-	-	4	5	4	3
Calvin city	24	35.0	1	8	-	-	3	3	4	2	1
Cypress township	26	44.0	2	6	-	-	2	4	5	2	1
Dresden township	53	49.2	1	8	3	1	1	10	13	10	4
Dresden township	50	41.0	3	11	1	-	5	9	10	3	1
Easby township	52	39.0	4	10	-	-	9	9	10	2	3
East Alma township	26	47.0	1	6	-	-	-	5	8	2	1
Elgin township	232	45.0	13	51	4	1	10	37	49	21	16
Fremont township	69	42.5	4	13	1	-	8	9	9	5	10
Glenila township	29	37.3	2	8	-	-	2	7	4	4	-
Gordon township	19	42.5	2	4	1	-	-	3	1	-	3
Grey township	22	41.5	2	3	-	-	6	-	5	6	-
Hannah city	20	64.5	1	-	-	-	2	2	-	1	5
Harvey township	36	56.0	-	3	-	2	2	1	9	5	1
Hay township	53	37.3	4	14	1	-	6	9	8	1	3
Henderson township	54	37.5	2	20	-	-	2	9	11	3	2
Hope township	42	50.5	-	11	1	1	3	2	9	2	2
Hove Mobile Park city	2	73.5	-	-	-	-	-	-	-	-	-
Huron township	34	34.0	2	7	1	4	3	2	6	2	2
Langdon city	2 101	46.2	75	413	53	34	145	295	277	106	106
Langdon township	38	46.0	1	8	-	1	1	7	12	6	1
Linden township	31	44.8	-	6	1	1	2	6	6	1	2
Loam township	47	40.5	3	8	1	1	5	6	6	5	3
Loma city	21	58.5	-	4	-	1	-	4	1	1	2
Manilla township	112	36.7	7	28	4	4	10	9	36	4	3
Milton city	85	39.5	4	18	1	2	7	19	9	5	3
Minto township	34	47.0	3	6	-	-	4	3	5	2	6
Montrose township	72	48.0	3	13	1	1	5	9	18	2	5
Moscow township	31	57.5	3	3	-	1	3	1	4	2	4
Mount Carmel township	78	40.8	3	19	1	1	7	18	5	1	3
Munich city	268	43.7	13	62	3	2	16	45	36	13	20
Nekoma city	51	44.1	-	15	2	-	1	11	11	2	2
Nekoma township	47	43.8	3	8	-	-	4	9	8	2	5
North Loma township	19	40.5	-	7	-	1	1	3	5	-	-
North Olga township	52	53.0	-	12	-	-	-	6	11	7	7
Osford township	47	55.5	1	8	1	-	1	3	9	1	8
Osnabrock city	174	50.5	8	29	4	10	11	15	17	6	14
Osnabrock township	48	55.3	3	7	-	-	3	5	5	5	3
Perry township	47	44.3	1	9	-	1	3	11	7	4	6
Shales city (part)	22	50.5	1	1	-	1	4	2	3	1	-
Seivert township	25	34.3	2	7	-	1	4	4	2	1	-
South Dresden township	43	48.5	2	5	3	-	3	7	6	4	2
South Olga township	52	50.0	1	8	1	2	-	5	17	4	3
Storlie township	20	40.0	1	6	-	-	1	3	3	2	1
Trier township	51	37.2	4	12	-	1	6	7	7	6	6
Wales city	30	56.5	-	2	1	2	1	3	5	2	2
Waterloo township	58	30.0	7	16	3	1	6	10	5	2	1
West Hope township	57	50.2	3	14	-	-	-	7	8	4	6
Dickey County											
Ada township	5 757	40.7	327	1 042	285	304	549	744	698	314	265
Albertha township	60	35.8	5	15	-	-	7	12	7	5	1
Albion township	20	40.5	2	3	-	-	3	3	2	4	1
Bear Creek township	51	45.5	1	12	2	2	1	7	12	3	4
Clement township	184	39.5	15	32	9	5	21	27	32	12	12
Divide township	107	44.8	3	18	5	7	5	16	22	7	5
Elden township	89	35.8	5	24	2	2	10	22	6	2	3
Ellendale city	83	42.5	7	20	1	-	4	13	6	5	10
Ellendale township	1 559	37.8	64	228	165	148	136	154	168	59	62
Elm township	115	44.2	6	21	4	6	4	19	13	15	8
Forbes city	78	44.5	3	11	3	5	8	9	12	6	6
Fullerton city	64	52.0	1	13	-	-	2	11	8	-	-
German township	85	31.3	4	26	-	6	11	9	7	4	4
Grand Valley township	23	47.5	1	4	-	-	1	5	2	3	3
Hamburg township	29	42.5	1	4	2	2	1	5	3	4	-
Hamburg township	24	59.0	3	-	-	-	4	2	1	4	5

Table 1. **Age and Sex: 2000**—Con.

[For information on confidentiality protection, nonsampling error, and definitions, see text]

Age—Con.			Age and sex						Percent of total population		State County County Subdivision Place
65 to 74 years	75 to 84 years	85 years and over	All ages		18 years and over		65 years and over		Under 18 years	65 years and over	
			Female	Males per 100 females	Total	Female	Total	Female			
-	-	-	27	140.7	44	20	-	-	32.3	-	Cass County—Con.
8	4	1	120	106.7	170	80	13	5	31.5	5.2	North River city
30	22	4	117	92.3	170	87	56	34	24.4	24.9	Oxbow city
2	-	3	33	81.8	39	19	5	3	35.0	8.3	Page city
25	7	1	213	100.0	308	154	33	19	27.7	7.7	Page township
11	2	1	41	143.9	75	35	14	8	25.0	14.0	Pleasant township
-	-	-	34	100.0	44	22	-	-	35.3	-	Pontiac township
13	5	1	135	100.0	185	89	19	8	31.5	7.0	Prairie Rose city
35	13	2	571	114.4	804	386	50	19	34.3	4.1	Raymond township
4	-	-	130	95.4	158	82	4	2	37.8	1.6	Reed township
6	4	-	35	125.7	58	29	10	4	26.6	12.7	Reile's Acres city
5	2	-	36	94.4	51	24	7	2	27.1	10.0	Rich township
11	3	2	52	105.8	78	36	16	8	27.1	15.0	Rochester township
72	24	7	1 096	109.5	1 568	745	103	46	31.7	4.5	Rush River township
5	-	-	35	91.4	52	28	5	2	22.4	7.5	Stanley township
18	14	7	123	104.9	183	90	39	24	27.4	15.5	Tower City city (part)
14	13	2	86	103.5	122	58	29	17	30.3	16.6	Tower City city (part)
10	2	1	62	114.5	96	47	13	8	27.8	9.8	Walburg township
7	9	2	37	143.2	72	28	18	7	20.0	20.0	Warren township
577	326	94	7 569	97.4	10 573	5 440	997	570	29.2	6.7	Watson township
16	3	1	66	122.7	109	53	20	9	25.9	13.6	West Fargo city
5	-	-	27	122.2	40	20	5	2	33.3	8.3	Wheatland township
12	7	2	34	105.9	62	30	21	10	11.4	30.0	Wheatland CDP
											Wiser township
544	382	181	2 429	98.9	3 643	1 844	1 107	620	24.6	22.9	Cavalier County
2	1	-	15	146.7	31	13	3	1	16.2	8.1	Alma township
3	5	1	33	106.1	46	23	9	4	32.4	13.2	Alsen city
7	2	-	24	79.2	31	16	9	5	27.9	20.9	Banner township
2	-	1	12	116.7	18	8	3	1	30.8	11.5	Billings township
5	1	-	15	106.7	24	12	6	4	22.6	19.4	Bruce township
2	3	-	10	120.0	22	10	5	2	-	22.7	Byron township
-	1	1	14	71.4	15	8	2	2	37.5	8.3	Calio city
2	2	-	9	188.9	18	7	4	2	30.8	15.4	Calvin city
1	1	-	24	120.8	44	21	2	2	17.0	3.8	Cypress township
5	2	-	19	163.2	36	16	7	4	28.0	14.0	Dresden township
3	-	2	25	108.0	38	17	5	2	26.9	9.6	Easby township
2	1	-	14	85.7	19	9	3	1	26.9	11.5	East Alma township
16	11	3	110	110.9	168	81	30	13	27.6	12.9	Elgin township
7	2	1	33	109.1	52	23	10	4	24.6	14.5	Fremont township
1	1	-	17	70.6	19	10	2	1	34.5	6.9	Glenila township
5	-	-	7	171.4	13	5	5	2	31.6	26.3	Gordon township
-	-	-	10	120.0	17	8	-	-	22.7	-	Grey township
8	1	-	9	122.2	19	9	9	4	5.0	45.0	Hannah city
11	2	-	18	100.0	33	16	13	7	8.3	36.1	Harvey township
3	3	1	26	103.8	35	15	7	4	34.0	13.2	Hay township
1	4	-	23	134.8	32	14	5	3	40.7	9.3	Henderson township
7	3	1	20	110.0	31	16	11	6	26.2	26.2	Hope township
2	-	-	1	100.0	2	1	2	1	-	100.0	Hove Mobile Park city
5	-	-	17	100.0	25	11	5	3	26.5	14.7	Huron township
265	214	118	1 120	87.6	1 613	876	597	364	23.2	28.4	Langdon city
1	-	-	17	123.5	29	14	1	1	23.7	2.6	Langdon township
5	1	-	14	121.4	25	11	6	4	19.4	19.4	Linden township
7	2	-	23	104.3	36	17	9	2	23.4	19.1	Loam township
5	3	-	10	110.0	17	8	8	4	19.0	38.1	Loma city
2	4	1	51	119.6	77	35	7	3	31.3	6.3	Manilla township
5	9	3	43	97.7	63	33	17	12	25.9	20.0	Milton city
3	2	-	18	88.9	25	13	5	1	26.5	14.7	Minto township
10	5	-	31	132.3	56	27	15	7	22.2	20.8	Montrose township
7	3	-	15	106.7	25	11	10	3	19.4	32.3	Moscow township
13	6	1	31	151.6	56	24	20	8	28.2	25.6	Mount Carmel township
24	25	9	142	88.7	193	102	58	35	28.0	21.6	Munich city
-	7	-	24	112.5	36	16	7	5	29.4	13.7	Nekoma city
6	2	-	20	135.0	36	14	8	3	23.4	17.0	Nekoma township
1	1	-	9	111.1	12	6	2	1	36.8	10.5	North Loma township
8	-	1	25	108.0	40	20	9	5	23.1	17.3	North Olga township
7	7	1	22	113.6	38	18	15	7	19.1	31.9	Osford township
12	22	26	89	95.5	137	69	60	34	21.3	34.5	Osnabrock city
11	5	1	25	92.0	38	20	17	8	20.8	35.4	Osnabrock township
5	-	-	20	135.0	37	17	5	3	21.3	10.6	Perry township
3	3	3	10	120.0	20	9	9	4	9.1	40.9	Sarles city (part)
3	1	-	11	127.3	16	7	4	1	36.0	16.0	Seivert township
6	5	-	22	95.5	36	17	11	5	16.3	25.6	South Dresden township
8	2	1	24	116.7	43	21	11	5	17.3	21.2	South Olga township
2	1	-	11	81.8	13	8	3	3	35.0	15.0	Storlie township
2	-	-	24	112.5	35	16	2	-	31.4	3.9	Trier township
10	2	-	12	150.0	28	11	12	6	6.7	40.0	Wales city
3	1	3	31	87.1	35	17	7	2	39.7	12.1	Waterloo township
10	3	2	30	90.0	40	18	15	6	29.8	26.3	West Hope township
536	453	240	2 919	97.2	4 388	2 279	1 229	726	23.8	21.3	Dickey County
4	3	1	31	93.5	40	22	8	6	33.3	13.3	Ada township
2	-	-	9	122.2	15	6	2	-	25.0	10.0	Albertha township
4	2	1	24	112.5	38	18	7	3	25.5	13.7	Albion township
8	9	2	88	109.1	137	66	19	7	25.5	10.3	Bear Creek township
12	5	2	50	114.0	86	40	19	8	19.6	17.8	Clement township
12	1	-	42	111.9	60	25	13	4	32.6	14.6	Divide township
9	7	1	41	102.4	56	24	17	7	32.5	20.5	Elden township
120	148	107	842	85.2	1 267	720	375	240	18.7	24.1	Ellendale city
13	4	2	54	113.0	88	39	19	9	23.5	16.5	Ellendale township
13	1	1	38	105.3	64	31	15	8	17.9	19.2	Elm township
15	11	3	30	113.3	50	22	29	13	21.9	45.3	Forbes city
4	10	-	43	97.7	55	27	14	9	35.3	16.5	Fullerton city
4	-	-	12	91.7	18	8	4	2	21.7	17.4	German township
4	3	-	12	141.7	24	9	7	3	17.2	24.1	Grand Valley township
4	1	-	12	100.0	21	10	5	3	12.5	20.8	Hamburg township

Table 1. **Age and Sex: 2000**—Con.

[For information on confidentiality protection, nonsampling error, and definitions, see text]

State County County Subdivision Place	Total population	Median age	Age									
			Under 5 years	5 to 17 years	18 to 20 years	21 to 24 years	25 to 34 years	35 to 44 years	45 to 54 years	55 to 59 years	60 to 64 years	
Dickey County—Con.												
Hudson township	77	36.8	5	18	3	1	9	19	6	4	6	6
James River Valley township	51	40.5	5	8	-	4	8	2	10	4	4	4
Kent township	25	49.5	2	3	1	-	4	1	5	2	1	1
Kentner township	167	30.3	12	45	10	10	18	18	21	6	8	8
Keystone township	50	36.0	4	9	-	-	12	1	4	9	4	4
Lorraine township	52	33.3	6	11	2	1	8	6	7	1	-	-
Lovell township	48	39.5	1	12	2	3	2	11	7	2	4	4
Ludden city	29	49.8	1	2	2	-	1	4	7	2	4	4
Maple township	54	49.0	1	11	2	1	2	9	3	5	4	4
Monango city	28	43.0	-	7	1	-	4	3	3	1	1	1
Northwest township	22	46.0	-	2	2	1	-	6	4	1	1	1
Oakes city	1 979	41.9	132	359	54	77	206	250	247	92	77	77
Port Emma township	68	39.5	5	14	3	2	6	12	12	5	2	2
Porter township	51	38.5	3	16	1	2	2	9	6	7	2	2
Potsdam township	39	43.8	2	5	1	1	6	5	-	5	-	4
Riverdale township	89	32.8	8	11	3	9	16	10	10	11	4	-
Spring Valley township	30	46.0	1	6	1	-	1	5	6	-	2	2
Valley township	38	55.0	1	4	-	1	5	3	5	7	4	4
Van Meter township	107	39.8	5	30	1	4	7	17	12	9	5	5
Whitestone township	33	40.8	-	11	1	-	1	8	5	1	2	2
Wright township	76	39.3	6	17	1	1	6	16	11	2	2	2
Yorktown township	41	43.3	2	6	-	3	4	8	2	2	3	3
Young township	32	41.5	4	4	1	-	3	7	4	3	1	1
Divide County	2 283	49.0	70	392	48	34	136	322	336	132	139	139
Alexandria township	14	41.5	-	4	-	-	1	3	-	2	-	1
Ambrose city	23	45.8	1	4	-	1	-	4	8	-	-	-
Ambrose township	28	51.0	-	6	1	1	-	2	7	-	2	2
Blooming Prairie township	51	44.8	4	9	-	-	-	9	8	5	3	3
Blooming Valley township	51	43.2	1	15	1	1	1	11	5	1	3	3
Border township	26	58.0	-	3	-	1	-	3	4	4	2	2
Burg township	36	39.5	-	8	1	2	2	12	1	1	2	2
Clinton township	16	65.0	-	1	-	-	-	-	4	2	1	1
Coalfield township	51	51.5	-	10	-	-	3	7	9	2	6	6
Crosby city	1 089	50.5	38	174	32	18	65	139	142	58	54	54
Daneville township	36	42.0	-	8	1	-	3	7	8	2	3	3
De Witt township	38	49.0	4	3	-	-	5	5	5	4	2	2
Elkhorn township	28	45.5	1	5	-	1	3	4	5	1	1	1
Fertile Valley township	25	38.5	1	6	-	-	3	4	-	1	3	3
Fillmore township	44	48.7	2	6	-	3	2	3	12	3	3	3
Fortuna city	31	45.5	1	5	-	-	4	7	5	-	-	-
Frazier township	23	40.5	1	4	1	-	-	6	2	2	1	1
Frederick township	37	38.8	1	12	-	-	2	5	4	1	-	-
Garnet township	16	49.0	1	3	-	-	-	2	5	-	2	2
Gooseneck township	39	49.5	-	6	-	-	4	7	6	7	4	4
Hawkeye township	35	50.5	-	8	1	-	2	5	6	2	2	2
Hayland township	34	41.0	2	11	-	-	2	5	3	1	2	2
Lincoln Valley township	26	49.5	2	4	1	-	1	2	8	1	1	1
Long Creek township	38	44.0	4	6	1	1	6	1	9	3	3	3
Mentor township	24	64.5	1	4	-	-	-	2	3	-	2	2
Noonan city	154	58.0	1	16	3	4	7	24	20	10	9	9
Palmer township	15	62.5	-	-	-	-	-	1	4	1	3	3
Plumer township	9	33.8	-	3	-	-	3	1	-	2	-	-
Sioux Trail township	32	47.5	-	3	2	-	3	5	8	1	6	6
Smoky Butte township	21	56.5	-	2	-	-	2	2	4	2	1	1
Stoneview township	14	58.5	-	2	-	-	-	2	2	1	1	1
Troy township	62	46.5	2	14	1	-	2	10	11	2	7	7
Twin Butte township	17	51.5	-	3	-	-	-	4	4	1	3	3
Upland township	23	47.5	1	4	-	-	2	3	7	2	-	-
Westby township	61	42.8	1	15	-	-	4	13	5	7	4	4
Writing Rock township	16	31.5	-	5	2	1	-	4	-	-	2	2
Dunn County	3 600	40.9	206	780	112	95	307	541	553	196	185	185
Dodge city	125	36.3	10	30	4	4	12	15	18	6	8	8
Dunn Center city	122	49.0	5	15	4	2	8	20	16	11	13	13
Fort Berthold UT	402	28.0	43	110	16	21	45	55	51	17	13	13
Halliday city	227	53.5	8	32	6	3	19	19	30	15	17	17
Halliday UT	458	46.2	11	96	8	10	20	67	104	24	24	24
Killdeer city	713	43.4	40	132	20	17	61	103	89	36	32	32
Killdeer UT	856	39.2	53	196	29	19	78	146	131	54	43	43
South Dunn UT	697	38.7	36	169	25	19	64	116	114	33	35	35
Eddy County	2 757	43.8	139	512	82	86	210	409	372	136	129	129
Bush township	54	39.3	-	19	-	-	2	13	5	2	3	3
Cherry Lake township	35	50.3	3	4	-	-	4	5	3	4	7	7
Columbia township	44	38.0	5	7	1	-	8	7	8	2	1	1
Colvin township	81	34.5	7	20	2	6	6	13	6	3	5	5
Eddy township	48	33.0	5	12	1	2	6	8	8	-	2	2
Freeborn township	78	49.5	10	6	-	-	8	10	8	6	5	5
Gates township	56	49.3	1	7	5	3	2	7	11	4	4	4
Grandfield township	41	37.3	4	10	1	-	3	11	2	2	4	4
Hillsdale township	48	44.5	1	12	3	-	2	7	8	5	-	-
Lake Washington township	33	27.5	4	8	1	1	4	7	1	1	2	2
Munster township	80	36.0	6	16	4	1	13	9	13	1	3	3
New Rockford city	1 463	46.2	59	245	40	53	111	200	190	62	68	68
New Rockford township	105	35.3	9	23	6	4	10	16	12	11	5	5
Paradise township	43	37.5	2	12	3	1	3	8	5	1	2	2
Pleasant Prairie township	39	46.5	1	7	2	-	1	8	7	2	1	1
Rosefield township	58	41.0	1	17	-	2	3	9	12	2	-	-
Sheldon township	22	60.0	-	1	-	-	-	2	3	5	3	3
Sheyenne city	318	44.9	14	62	10	13	17	44	53	19	9	9
Superior township	68	39.3	4	15	3	-	5	14	9	2	1	1
Tiffany township	43	42.8	3	9	-	-	2	11	8	2	4	4

Table 1. **Age and Sex: 2000**—Con.

[For information on confidentiality protection, nonsampling error, and definitions, see text]

Age—Con.			Age and sex						Percent of total population		State County County Subdivision Place
65 to 74 years	75 to 84 years	85 years and over	All ages		18 years and over		65 years and over		Under 18 years	65 years and over	
			Female	Males per 100 females	Total	Female	Total	Female			
5	1	-	35	120.0	54	23	6	3	29.9	7.8	Dickey County—Con.
2	4	-	24	112.5	38	18	6	3	25.5	11.8	Hudson township
3	2	1	13	92.3	20	10	6	3	20.0	24.0	James River Valley township
12	7	-	88	89.8	110	58	19	10	34.1	11.4	Kent township
7	-	-	24	108.3	37	18	7	3	26.0	14.0	Kentner township
5	5	-	24	116.7	35	15	10	4	32.7	19.2	Keystone township
2	1	1	23	108.7	35	17	4	2	27.1	8.3	Lorraine township
4	1	1	14	107.1	26	12	6	5	10.3	20.7	Lovell township
8	5	3	24	125.0	42	19	16	8	22.2	29.6	Ludden city
6	2	-	15	86.7	21	10	8	6	25.0	28.6	Maple township
2	2	1	8	175.0	20	7	5	2	9.1	22.7	Monango city
193	184	108	1 023	93.5	1 488	795	485	304	24.8	24.5	Northwest township
4	3	-	30	126.7	49	23	7	4	27.9	10.3	Oakes city
-	-	3	23	121.7	32	16	3	3	37.3	5.9	Port Emma township
10	3	1	18	116.7	32	14	14	7	17.9	35.9	Porter township
3	4	-	39	128.2	70	33	7	5	21.3	7.9	Potsdam township
6	2	-	15	100.0	23	11	8	4	23.3	26.7	Riverdale township
4	4	-	17	123.5	33	15	8	3	13.2	21.1	Spring Valley township
11	6	-	49	118.4	72	33	17	8	32.7	15.9	Valley township
2	2	-	16	106.3	22	10	4	2	33.3	12.1	Van Meter township
7	6	1	39	94.9	53	28	14	8	30.3	18.4	Whitestone township
7	4	-	17	141.2	33	16	11	5	19.5	26.8	Wright township
5	-	-	13	146.2	24	11	5	2	25.0	15.6	Yorktown township
279	265	130	1 137	100.8	1 821	922	674	381	20.2	29.5	Young township
1	3	-	8	75.0	10	5	4	2	28.6	28.6	Divide County
2	1	1	11	109.1	18	7	4	3	21.7	17.4	Alexandria township
3	3	3	11	154.5	22	9	9	3	21.4	32.1	Ambrose city
4	3	2	26	96.2	38	18	9	4	25.5	17.6	Ambrose township
7	5	-	27	88.9	35	15	12	5	31.4	23.5	Blooming Prairie township
6	3	-	11	136.4	23	10	9	4	11.5	34.6	Blooming Valley township
4	3	-	17	111.8	28	14	7	3	22.2	19.4	Border township
2	3	3	8	100.0	15	8	8	4	6.3	50.0	Burg township
11	2	1	17	200.0	41	16	14	6	19.6	27.5	Clinton township
132	145	92	579	88.1	877	489	369	232	19.5	33.9	Coalfield township
3	1	-	15	140.0	28	12	4	1	22.2	11.1	Crosby city
6	2	2	20	90.0	31	16	10	6	18.4	26.3	Daneville township
3	4	-	14	100.0	22	11	7	4	21.4	25.0	De Witt township
4	2	1	13	92.3	18	8	7	3	28.0	28.0	Elkhorn township
4	3	3	19	131.6	36	15	10	4	18.2	22.7	Fertile Valley township
5	3	1	14	121.4	25	10	9	4	19.4	29.0	Fillmore township
6	-	-	12	91.7	18	8	6	2	21.7	26.1	Fortuna city
6	6	-	17	117.6	24	10	12	5	35.1	32.4	Frazier township
2	1	-	7	128.6	12	5	3	2	25.0	18.8	Frederick township
2	2	1	15	160.0	33	14	5	2	15.4	12.8	Garnet township
4	5	-	17	105.9	27	10	9	2	22.9	25.7	Gooseneck township
4	3	1	17	100.0	21	10	8	4	38.2	23.5	Hawkeye township
3	3	-	14	85.7	20	10	6	3	23.1	23.1	Hayland township
3	-	1	17	123.5	28	13	4	2	26.3	10.5	Lincoln Valley township
5	7	-	12	100.0	19	10	12	6	20.8	50.0	Long Creek township
22	25	13	77	100.0	137	70	60	36	11.0	39.0	Mentor township
3	-	3	7	114.3	15	7	6	3	-	40.0	Noonan city
-	-	-	4	125.0	6	3	-	-	33.3	-	Palmer township
2	2	-	11	190.9	29	11	4	-	9.4	12.5	Plumer township
3	4	1	9	133.3	19	8	8	4	9.5	38.1	Sioux Trail township
2	4	-	7	100.0	12	6	6	3	14.3	42.9	Smoky Butte township
5	8	-	31	100.0	46	21	13	7	25.8	21.0	Stonewall township
-	2	-	6	183.3	14	6	2	1	17.6	11.8	Troy township
3	1	-	11	109.1	18	9	4	3	21.7	17.4	Twin Butte township
6	5	1	27	125.9	45	22	12	6	26.2	19.7	Upland township
1	1	-	9	77.8	11	6	2	2	31.3	12.5	Westby township
304	232	89	1 763	104.2	2 614	1 284	625	336	27.4	17.4	Writing Rock township
12	6	-	60	108.3	85	43	18	11	32.0	14.4	Dunn County
11	11	6	64	90.6	102	53	28	19	16.4	23.0	Dodge city
19	10	2	198	103.0	249	125	31	15	38.1	7.7	Dunn Center city
34	34	10	113	100.9	187	86	78	39	17.6	34.4	Fort Berthold UT
54	30	10	221	107.2	351	167	94	52	23.4	20.5	Halliday city
61	71	51	391	82.4	541	303	183	114	24.1	25.7	Halliday UT
61	41	5	383	123.5	607	281	107	46	29.1	12.5	Killdeer city
52	29	5	333	109.3	492	226	86	40	29.4	12.3	Killdeer UT
312	250	120	1 410	95.5	2 106	1 095	682	399	23.6	24.7	South Dunn UT
6	3	1	23	134.8	35	17	10	6	35.2	18.5	Eddy County
2	2	1	14	150.0	28	12	5	1	20.0	14.3	Bush township
3	1	1	21	109.5	32	14	5	2	27.3	11.4	Cherry Lake township
8	3	2	38	113.2	54	26	13	5	33.3	16.0	Columbia township
1	3	-	18	166.7	31	12	4	1	35.4	8.3	Colvin township
17	7	1	31	151.6	62	23	25	8	20.5	32.1	Eddy township
8	4	-	27	107.4	48	22	12	5	14.3	21.4	Freeborn township
1	3	-	17	141.2	27	10	4	-	34.1	9.8	Gates township
7	2	1	24	100.0	35	16	10	6	27.1	20.8	Grandfield township
4	-	-	15	120.0	21	11	4	2	36.4	12.1	Hillsdale township
9	4	1	35	128.6	58	26	14	6	27.5	17.5	Lake Washington township
173	159	103	793	84.5	1 159	644	435	276	20.8	29.7	Munster township
7	2	-	51	105.9	73	35	9	6	30.5	8.6	New Rockford city
5	1	-	22	95.5	29	14	6	3	32.6	14.0	New Rockford township
5	5	-	17	129.4	31	13	10	4	20.5	25.6	Paradise township
8	4	-	20	190.0	40	17	12	3	31.0	20.7	Pleasant Prairie township
4	4	-	11	100.0	21	11	8	5	4.5	36.4	Rosefield township
35	33	9	176	80.7	242	134	77	52	23.9	24.2	Sheldon township
8	7	-	36	88.9	49	23	15	6	27.9	22.1	Sheyenne city
1	3	-	21	104.8	31	15	4	2	27.9	9.3	Superior township
											Tiffany township

Table 1. **Age and Sex: 2000**—Con.

[For information on confidentiality protection, nonsampling error, and definitions, see text]

State County County Subdivision Place	Total population	Median age	Age								
			Under 5 years	5 to 17 years	18 to 20 years	21 to 24 years	25 to 34 years	35 to 44 years	45 to 54 years	55 to 59 years	60 to 64 years
Emmons County	4 331	44.5	229	846	85	76	337	628	530	234	259
Braddock city	43	62.3	-	3	3	1	-	3	7	2	4
Buchanan Valley township	40	36.0	1	10	1	-	8	7	7	2	2
Campbell township	66	40.5	7	12	-	1	5	11	5	4	9
Hague city	91	55.5	3	13	-	-	12	11	6	2	5
Hazelon city	237	49.3	11	42	7	2	12	34	26	15	17
Hazelon township	70	36.0	2	19	2	1	8	13	12	4	1
Lincoln township	28	47.5	1	2	-	1	3	7	3	3	3
Linton city	1 321	48.0	58	235	20	34	99	167	154	66	67
Northeast Emmons UT	510	38.4	40	115	12	3	58	80	67	30	29
North Emmons UT	59	49.5	-	15	2	-	1	5	12	7	5
South Emmons UT	685	38.6	44	164	21	17	54	114	85	37	41
Strasburg city	549	54.9	27	83	8	11	26	67	53	23	31
Tell township	39	48.5	3	8	-	-	3	4	7	4	4
West Emmons UT	593	42.6	32	125	9	5	48	105	86	35	41
Foster County	3 759	40.5	200	785	102	105	372	601	445	156	190
Birtsell township	114	40.0	7	25	7	2	8	19	23	2	4
Bordulac township	97	37.3	5	26	1	2	9	18	13	3	6
Bucephalia township	61	43.8	3	10	2	2	5	9	9	4	2
Carrington city	2 268	39.9	134	443	56	80	250	358	230	91	102
Carrington township	182	37.8	10	52	4	-	17	31	26	10	13
Eastman township	23	39.5	1	6	1	-	1	5	3	1	4
Estabrook township	67	37.1	3	18	1	1	9	11	11	3	5
Florance township	46	43.5	-	13	1	1	-	12	4	3	2
Glenfield city	134	39.7	7	28	3	4	16	14	20	8	4
Glenfield township	68	49.3	2	7	2	2	2	8	20	4	5
Grace City city	71	37.3	5	16	2	5	6	13	11	3	3
Haven township	47	55.8	1	9	1	-	1	8	2	4	2
Larrabee township	46	39.5	3	7	1	2	10	1	11	5	1
Longview township	53	38.5	2	13	2	-	8	12	7	-	2
McHenry city	71	63.5	4	2	2	7	5	4	4	4	11
McHenry township	65	42.3	3	15	1	-	4	11	5	5	2
McKinnon township	36	44.5	1	10	1	-	2	4	4	1	3
Melville township	38	48.0	-	6	2	-	3	4	10	3	2
Nordmore township	70	41.8	2	18	6	-	1	18	8	-	5
Rolling Prairie township	41	43.8	3	7	2	2	1	6	7	1	3
Rose Hill township	90	36.0	3	26	3	1	11	19	7	-	5
Wyard township	71	37.5	1	28	1	-	3	16	10	1	4
Golden Valley County	1 924	41.2	105	440	51	48	159	268	256	94	93
Beach city	1 116	43.2	65	219	30	30	95	150	141	51	49
Beach township	189	17.8	11	86	5	3	12	18	18	7	7
Bullion township	25	50.5	-	2	2	2	1	2	5	-	1
Delhi township	43	39.8	3	15	-	-	1	9	3	3	1
East Golden Valley UT	12	30.5	-	5	1	-	-	1	4	1	-
Elk Creek township	11	35.8	1	1	-	-	-	6	-	-	-
Elmwood township	9	50.5	-	1	1	1	-	1	2	2	-
Garner township	28	47.5	-	5	-	2	-	5	5	4	-
Golva city	106	39.3	8	23	1	1	13	16	17	3	11
Henry township	27	55.8	-	2	2	-	4	2	2	13	1
Lone Tree township	156	37.0	8	40	4	3	19	25	24	5	6
North Golden Valley UT	32	39.0	1	5	3	2	3	3	6	1	4
Pearl township	9	36.5	-	3	-	-	-	2	-	-	-
Saddle Butte township	27	41.3	2	5	-	-	3	8	2	2	2
Sentinel township	45	46.5	3	6	-	2	4	5	13	1	4
Sentinel Butte city	62	49.5	-	12	1	1	-	10	10	1	6
South Golden Valley UT	27	18.5	3	10	1	1	2	5	4	-	1
Grand Forks County	66 109	29.2	4 245	11 490	5 796	7 189	9 419	9 601	7 766	2 376	1 859
Agnes township	83	42.5	4	14	8	1	5	17	9	4	7
Allendale township	368	34.7	21	95	16	14	41	68	63	16	14
Americus township	162	40.5	7	37	8	8	7	31	31	13	5
Arvilla township	334	38.0	16	66	20	17	32	66	58	11	15
Avon township	86	42.0	7	15	1	2	11	10	27	3	-
Bentru township	64	39.5	6	13	-	3	5	12	8	6	6
Blooming township	761	24.4	89	266	20	10	142	127	50	20	11
Grand Forks AFB CDP (part)	490	13.1	75	210	10	4	107	76	5	1	-
Brenna township	638	38.0	40	144	21	18	69	118	124	40	16
Chester township	155	35.5	9	28	4	9	25	26	20	8	4
Elkmount township	54	34.5	5	12	2	3	5	8	6	2	3
Elm Grove township	123	42.2	8	18	2	5	22	12	21	7	5
Emerado city	510	33.3	22	102	13	35	104	101	69	26	18
Fairfield township	126	33.0	10	31	6	2	19	27	10	4	3
Falconer township	313	37.8	26	67	8	3	35	58	53	15	21
Ferry township	380	36.7	21	87	17	17	40	75	62	5	12
Gilby city	243	34.6	10	62	4	4	44	49	24	6	7
Gilby township	122	43.5	2	27	3	2	8	27	31	5	3
Grace township	82	41.0	2	19	2	2	6	17	21	4	2
Grand Forks city	49 321	28.3	2 910	7 655	4 986	6 288	6 981	6 657	5 867	1 747	1 394
Grand Forks township	448	44.5	19	84	23	6	18	77	88	55	31
Heglon township	172	40.7	11	34	9	2	12	37	31	7	10
Inkster city	102	41.5	5	18	2	7	9	16	11	7	3
Inkster township	127	31.5	7	28	8	7	16	9	16	11	7
Johnstown township	91	41.5	5	23	1	1	5	22	12	5	2
Lakeville township	71	39.5	1	16	3	1	12	10	14	1	1
Larimore city	1 433	38.8	78	317	36	42	148	245	163	71	44
Larimore township	122	37.6	6	25	3	4	16	24	24	5	7
Levant township	56	43.0	2	9	1	3	3	11	7	8	2
Lind township	65	47.4	4	12	2	-	4	7	14	2	8
Logan Center township	48	45.5	2	11	-	-	6	5	10	4	1
Loretta township	52	46.5	2	11	1	3	-	7	12	5	2
Manvel city	370	35.0	15	91	12	11	56	57	66	19	12
Mekinock township	4 529	22.4	600	1 024	419	566	1 025	756	100	13	6
Grand Forks AFB CDP (part)	4 342	22.2	590	982	413	558	1 005	715	74	2	2
Michigan township	161	36.8	7	41	8	2	16	35	18	7	9

Table 1. **Age and Sex: 2000**—Con.

[For information on confidentiality protection, nonsampling error, and definitions, see text]

Age—Con.			Age and sex						Percent of total population		State County County Subdivision Place
65 to 74 years	75 to 84 years	85 years and over	All ages		18 years and over		65 years and over		Under 18 years	65 years and over	
			Female	Males per 100 females	Total	Female	Total	Female			
551	382	174	2 147	101.7	3 256	1 621	1 107	593	24.8	25.6	Emmons County
13	7	-	22	95.5	40	21	20	10	7.0	46.5	Braddock city
1	1	-	20	100.0	29	13	2	1	27.5	5.0	Buchanan Valley township
8	3	-	34	94.1	47	23	12	6	28.8	18.2	Campbell township
16	18	5	49	85.7	75	40	39	21	17.6	42.9	Hague city
31	30	10	119	99.2	184	93	71	40	22.4	30.0	Hazelton city
1	6	1	30	133.3	49	23	8	4	30.0	11.4	Hazelton township
4	-	1	13	115.4	25	12	5	2	10.7	17.9	Lincoln township
213	136	72	696	89.8	1 028	553	421	241	22.2	31.9	Linton city
46	22	8	236	116.1	355	166	76	34	30.4	14.9	Northeast Emmons UT
5	5	2	30	96.7	44	21	12	5	25.4	20.3	North Emmons UT
69	31	8	317	116.1	477	216	108	54	30.4	15.8	South Emmons UT
79	83	58	302	81.8	439	244	220	132	20.0	40.1	Strasburg city
4	1	1	16	143.8	28	12	6	2	28.2	15.4	Tell township
61	39	7	263	125.5	436	184	107	41	26.5	18.0	West Emmons UT
408	280	115	1 891	98.8	2 774	1 417	803	454	26.2	21.4	Foster County
7	10	-	53	115.1	82	35	17	7	28.1	14.9	Birtsell township
11	3	-	44	120.5	66	28	14	7	32.0	14.4	Bordulac township
10	4	1	26	134.6	48	22	15	8	21.3	24.6	Bucephalia township
239	189	96	1 190	90.6	1 691	903	524	317	25.4	23.1	Carrington city
15	4	-	84	116.7	120	60	19	8	34.1	10.4	Carrington township
1	-	-	13	76.9	16	9	1	1	30.4	4.3	Eastman township
4	-	1	30	123.3	46	21	5	2	31.3	7.5	Estabrook township
5	4	1	21	119.0	33	16	10	5	28.3	21.7	Florance township
16	8	6	71	88.7	99	55	30	21	26.1	22.4	Glenfield city
8	6	2	32	112.5	59	30	16	8	13.2	23.5	Glenfield township
3	4	-	38	86.8	50	27	7	7	29.6	9.9	Grace City city
14	5	-	22	113.6	37	17	19	8	21.3	40.4	Haven township
2	3	-	23	100.0	36	18	5	3	21.7	10.9	Larrabee township
1	5	1	24	120.8	38	16	7	4	28.3	13.2	Longview township
22	8	4	37	91.9	65	35	34	17	8.5	47.9	McHenry city
13	6	-	33	97.0	47	22	19	9	27.7	29.2	McHenry township
8	2	-	19	89.5	25	11	10	4	30.6	27.8	McKinnon township
5	2	1	18	111.1	32	13	8	3	15.8	21.1	Melville township
8	4	-	32	118.8	50	22	12	2	28.6	17.1	Nordmore township
4	4	1	20	105.0	31	13	9	5	24.4	22.0	Rolling Prairie township
9	6	-	34	164.7	61	25	15	6	32.2	16.7	Rose Hill township
3	3	1	27	163.0	42	19	7	2	40.8	9.9	Wyard township
174	159	77	999	92.6	1 379	733	410	249	28.3	21.3	Golden Valley County
102	119	65	618	80.6	832	472	286	185	25.4	25.6	Beach city
12	7	3	72	162.5	92	42	22	11	51.3	11.6	Beach township
7	1	2	14	78.6	23	12	10	5	8.0	40.0	Bullion township
5	3	-	24	79.2	25	13	8	4	41.9	18.6	Delhi township
-	-	-	4	200.0	7	3	-	-	41.7	-	East Golden Valley UT
1	-	-	5	120.0	9	4	1	-	18.2	9.1	Elk Creek township
-	-	1	4	125.0	8	4	1	1	11.1	11.1	Elmwood township
7	-	-	12	133.3	23	10	7	3	17.9	25.0	Garner township
7	5	1	56	89.3	75	37	13	6	29.2	12.3	Golva city
-	1	-	12	125.0	25	12	1	1	7.4	3.7	Henry township
11	8	3	79	97.5	108	52	22	12	30.8	14.1	Lone Tree township
1	3	-	18	77.8	26	13	4	2	18.8	12.5	North Golden Valley UT
4	-	-	5	80.0	6	3	4	2	33.3	44.4	Pearl township
2	1	-	15	80.0	20	10	3	2	25.9	11.1	Saddle Butte township
5	2	-	18	150.0	36	15	7	3	20.0	15.6	Sentinel township
10	9	2	31	100.0	50	25	21	12	19.4	33.9	Sentinel Butte city
-	-	-	12	125.0	14	6	-	-	48.1	-	South Golden Valley UT
3 120	2 315	933	32 454	103.7	50 374	24 898	6 368	3 762	23.8	9.6	Grand Forks County
10	4	-	40	107.5	65	33	14	6	21.7	16.9	Agnes township
9	8	3	166	121.7	252	120	20	12	31.5	5.4	Allendale township
7	6	2	70	131.4	118	51	15	9	27.2	9.3	Americus township
22	9	2	152	119.7	252	115	33	16	24.6	9.9	Arvilla township
8	1	1	46	87.0	64	30	10	6	25.6	11.6	Avon township
2	2	1	28	128.6	45	19	5	2	29.7	7.8	Bentru township
17	7	2	385	97.7	406	203	26	14	46.6	3.4	Blooming township
2	-	-	251	95.2	205	103	2	2	58.2	0.4	Grand Forks AFB CDP (part)
33	12	3	314	103.2	454	218	48	23	28.8	7.5	Brenna township
13	8	1	68	127.9	118	53	22	10	23.9	14.2	Chester township
6	1	1	28	92.9	37	17	8	2	31.5	14.8	Elkmount township
16	7	-	55	123.6	97	46	23	10	21.1	18.7	Elm Grove township
15	5	-	224	127.7	386	169	20	5	24.3	3.9	Emerado city
9	5	-	56	125.0	85	39	14	7	32.5	11.1	Fairfield township
18	7	2	151	107.3	220	107	27	12	29.7	8.6	Falconer township
24	17	3	169	124.9	272	118	44	23	28.4	11.6	Ferry township
13	15	5	116	109.5	171	82	33	20	29.6	13.6	Gilby city
12	2	-	60	103.3	93	44	14	4	23.8	11.5	Gilby township
3	4	-	40	105.0	61	28	7	5	25.6	8.5	Grace township
2 317	1 768	751	24 417	102.0	38 756	19 356	4 836	2 954	21.4	9.8	Grand Forks city
32	11	4	211	112.3	345	165	47	21	23.0	10.5	Grand Forks township
13	5	1	79	117.7	127	60	19	6	26.2	11.0	Hegton township
12	8	4	50	104.0	79	38	24	12	22.5	23.5	Inkster city
14	4	-	63	101.6	92	49	18	11	27.6	14.2	Inkster township
12	3	-	48	89.6	63	32	15	8	30.8	16.5	Johnstown township
6	6	-	35	102.9	54	26	12	5	23.9	16.9	Lakeville township
119	116	54	747	91.8	1 038	545	289	176	27.6	20.2	Larimore city
4	4	-	61	100.0	91	44	8	3	25.4	6.6	Larimore township
4	6	-	29	93.1	45	24	10	5	19.6	17.9	Levant township
7	5	-	32	103.1	49	22	12	4	24.6	18.5	Lind township
4	4	1	19	152.6	35	16	9	3	27.1	18.8	Logan Center township
4	4	1	27	92.6	39	20	9	5	25.0	17.3	Loretta township
13	15	3	173	113.9	264	129	31	20	28.6	8.4	Manvel city
16	3	1	2 078	117.9	2 905	1 288	20	10	35.9	0.4	Mekinock township
1	-	-	1 996	117.5	2 770	1 226	1	1	36.2	-	Grand Forks AFB CDP (part)
15	2	1	81	98.8	113	54	18	5	29.8	11.2	Michigan township