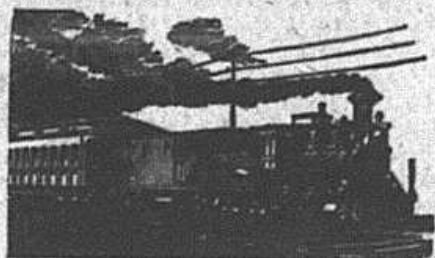


A NEW RAILROAD



Fargo, Duluth & Northwestern, for Steele County.

May Turn Out to Be the Soo Line or the Big Milwaukee.

As stated in these columns a few weeks ago, Steele county will soon have a railroad—one that will probably do the country some good. The following dispatch from Fargo on Saturday, says:

"It may not be generally known that some of our citizens, together with eastern capitalists, have been quietly at work for some time to secure another railroad for Fargo. Incorporation papers were sent to the secretary of state today, incorporating the Fargo, Duluth & Northwestern railroad.

It is proposed by the projectors of the enterprise to first build southeast, intersecting with the various roads in that direction. As soon as that is completed the road will be extended in a north-westerly direction through the counties of Cass, Steele, Traill, Nelson, Ramsey and Cavalier, to the international boundry. When that is completed it is promised to build from Fargo to Duluth thereby opening up a new lumber, stock and farming country that will be tributary to Fargo, and at the same time give the shortest line possible to the head of the lake. This will give our wholesale trade just the road they have been wanting for some time and will assure to Fargo the commercial center of the northwest.

The incorporators are J. W. VonNeida R. S. Lewis, James Kennedy, Dr. S. T. Satterthwaite and J. A. Johnson."
