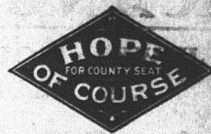




The Hope Pioneer.



VOLUME 28.

HOPE, STEELE COUNTY, NORTH DAKOTA OCTOBER 15, 1908.

No. 27

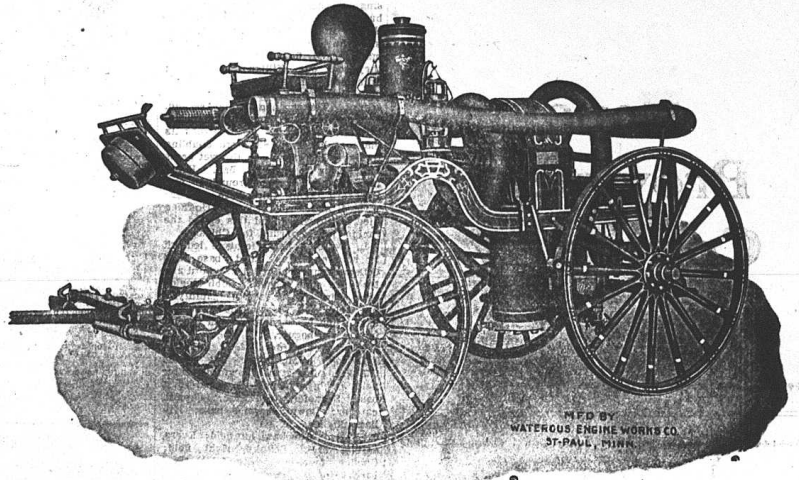
GOOD FIRE PROTECTION!

Is Among The Many Reasons You Should Vote For Hope For The County Seat.

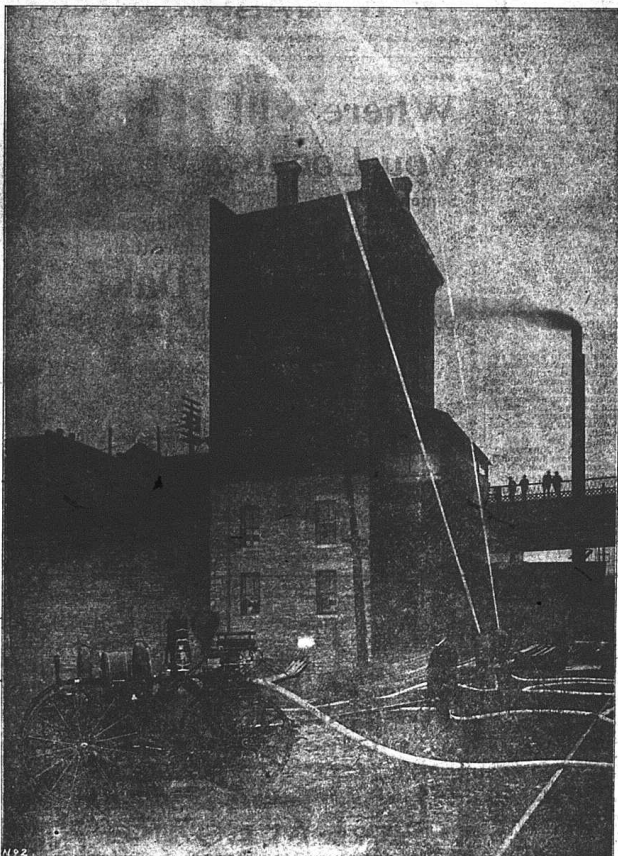
Hope's Fire Department.

This is a cut of our fire engine, which was installed at an expense of about \$2,500.00; this together with 10 large cisterns, 2000 ft. of hose, two hose carts, one hook and ladder truck, 1 hand power fire engine to be used in cases of emergency, fire buckets, etc., represent an investment of \$5,000.00. As to organization: We have one of the best organized volunteer fire departments in the state. This summer we had fire start in two buildings at one time, when it was necessary to turn on three streams of water, and a number of traveling men remarked that they had never seen quicker or more effective work done in the large cities.

In view of the fact that one Insurance Company this summer cancelled its policy on our present court house and it had to be rewritten in another company, isn't it worth while to consider this fire protection in voting for the county seat? The picture below shows the engine in operation. We have thrown water over the Farmers' elevator through 1000 feet of hose, showing how effective the engine is.



HOPE'S 25-H.P. GASOLINE FIRE ENGINE.



THIS CUT SHOWS WHAT HOPE'S FIRE-FIGHTER DOES.

THIS IS ALL WE ASK!

That the voters consider the advantages of each town and vote for the one that offers the greatest number of advantages.

No town can be equally distant from every part of the county, but as far as Hope and Finley are concerned there are no advantages.

The average distance from Finley to the center of the four corner townships is 21 mi.

The average distance from Hope to the center of the four corner township is 20 3/4 mi.

In the south half of the county the furthest section of land is 19 mi. from Hope.

In the north half the furthest section is 26 mi. from Finley.

From Hope to the most distant corner of the county is 35 mi.

From Finley to the most distant corner of the county is 36 mi.

From the exact center of the county it is 9 mi. to Hope by section line, and from the center to Finley it is 9 mi.

In the south half of the county Hope is the only contestant for county seat that has announced itself.

In the north half Sharon has in its local paper stated that it was in the race. Finley and Sherbrooke are asking for your support, so we repeat that with Hope's 200 votes in the city and with its large local territory it is the only possible town to unite and secure the required two-thirds vote.

As a matter of fact the advantage of location is so slight between Hope and Finley that we make no claims in this regard. But here are a few things to consider:

Hope has the best FIRE PROTECTION, the only FIRST-CLASS State High School in the county, Good Hotel Accomodations, Fine Churches, Lodges, \$20,000. Electric Light Plant, Graded Streets, Miles of Cement Sidewalks, 1000 as good people as can be found on earth.

These advantages Hope now has, and all her public improvements are paid for. You don't need to vote for any town that may have them in the future, as there is no assurance of what the future may bring forth.

MR.-VOTER the question of removal of the county seat will be up to you NOVEMBER 3RD. All we ask is that you consider the question well and we have no fear of your verdict.